

Mass Spectrum List Report

Analysis Info

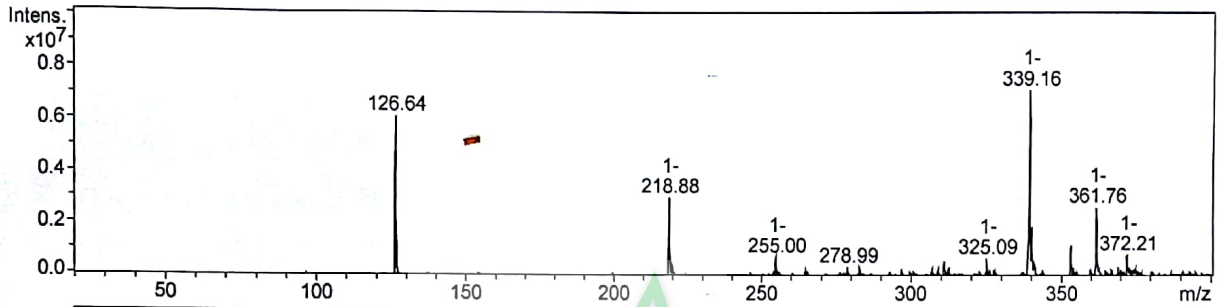
Analysis Name D:\Data\Xuhao-1\20190429-b25909.d
Method DEF_MS_20151104_Ren.M
Sample Name 220
Comment

Acquisition Date 4/29/2019 3:38:35 PM

Operator ZWS
Instrument amaZon SL

Acquisition Parameter

Ion Source Type	ESI	Ion Polarity	Negative	Alternating Ion Polarity	off
Mass Range Mode	UltraScan	Scan Begin	20 m/z	Scan End	400 m/z
Accumulation Time	446 μ s	RF Level	47 %	Trap Drive	42.2
SPS Target Mass	220 m/z	Averages	10 Spectra	n/a	n/a



m/z	z	I	FWHM
126.64		6141310	0.35
218.88	1-	3019663	0.37
219.89	1-	503148	0.39
255.00	1-	701065	0.47
264.94		203987	0.48
276.61		170278	0.35
278.99		331238	0.36
283.06		319697	0.40
297.02		218892	0.32
307.09		292474	0.41
309.05		245410	0.38
311.06	1-	603159	0.35
312.59		309649	0.44
325.09	1-	661394	0.37
327.74		265568	0.48
339.16	1-	7132149	0.41
340.14	1-	1877763	0.39
341.05	1-	437384	0.45
343.74		271702	0.39
353.10	1-	1164795	0.42
354.15	1-	301222	0.30
359.81		203821	0.33
361.76	1-	2638513	0.37
362.74	1-	314011	0.46
365.10		190779	0.54
367.01		257888	0.40
369.18		331460	0.32
370.19		193352	0.27
371.18		223190	0.35
372.21	1-	808099	0.38
373.19	1-	270570	0.34
374.20		249387	0.56
375.08		323461	0.42
387.09		165564	0.29
391.14		167289	0.34

