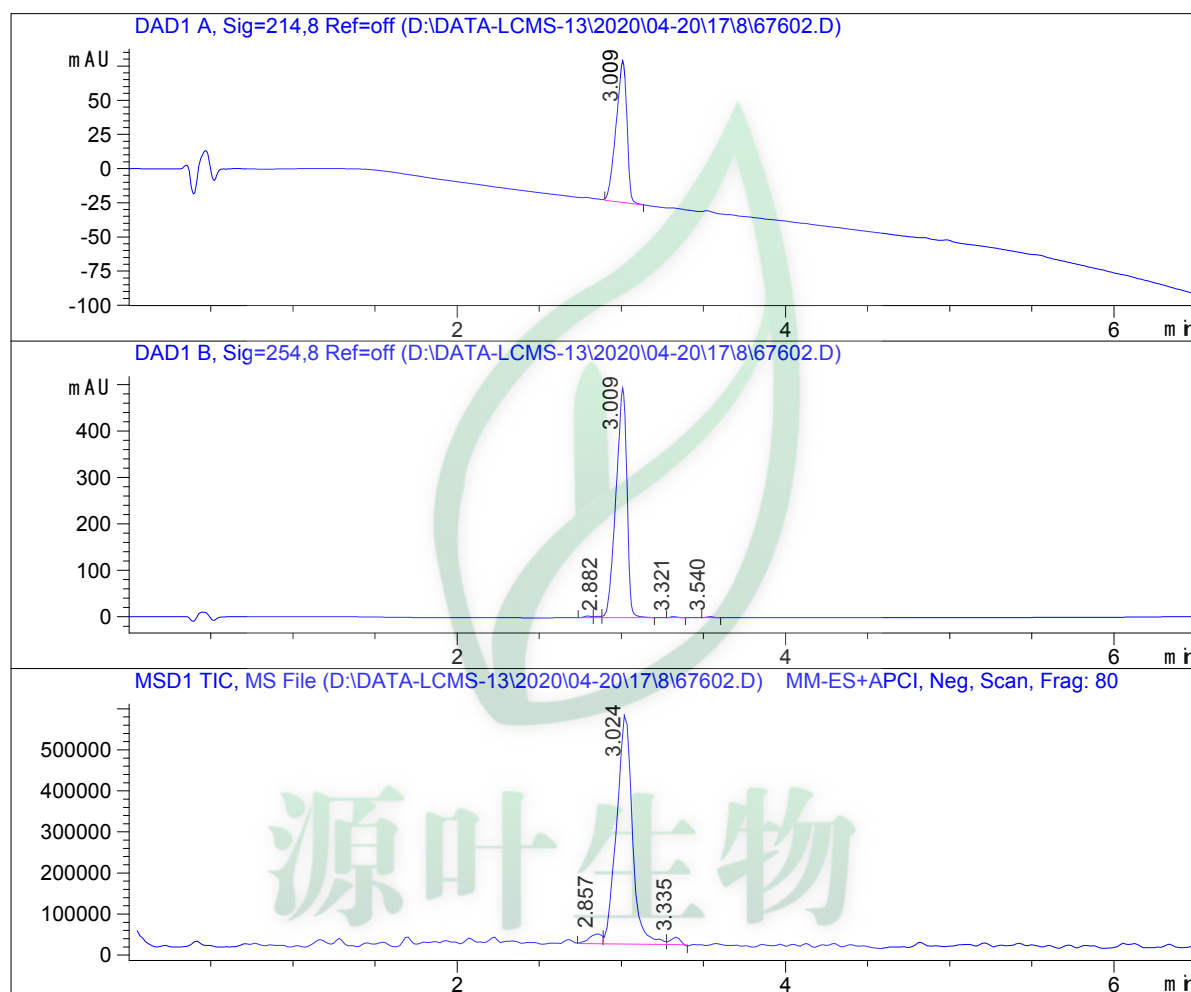


LCMS Report

Sample Name : 67602
Data File : D:\DATA-LCMS-13\2020\04-20\17\8\67602.D
Injection Date : Sun, 19. Apr. 2020 Inj. Vol. : 5ul
Acq Operator : LCMS-13 Location : Vial 77
Acq. Method : D:\data-lcms-13\2020\04-20\17\8\N-05-60.M
Method Info. : column:Xbridge C18 5um 4.6*30mm ;mobile phase:B (ACN),
A(0.02%NH4Ac); gradient(B%):as Acq.Method above



Integration Results

Signal 1: DAD1 A, Sig=214,8 Ref=off

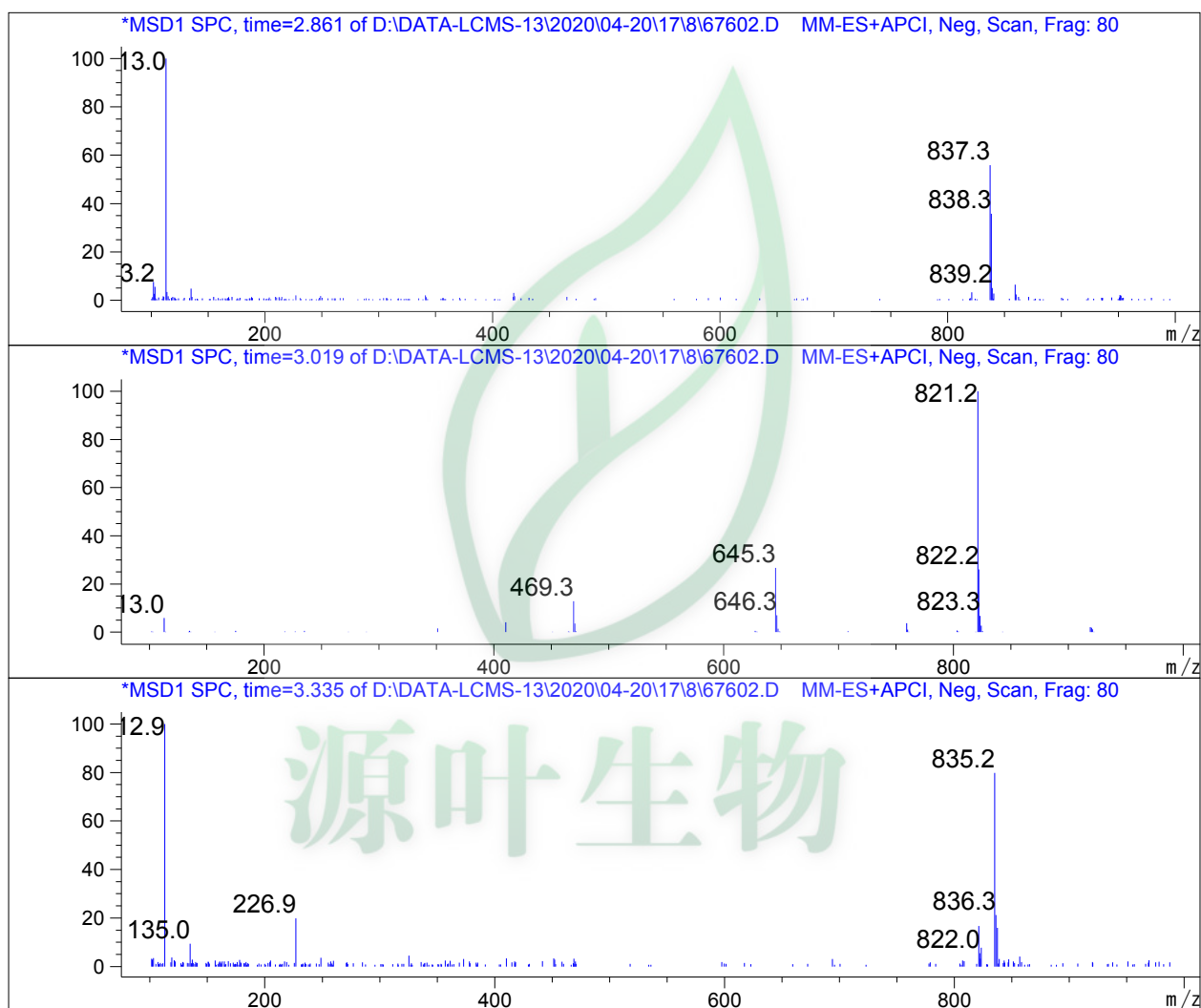
#	R.T.	Type	Height	Height%	Width	Area	Area %
1	3.009	BB	103.800	100.000	0.069	473.142	100.000

Signal 2: DAD1 B, Sig=254,8 Ref=off

#	R.T.	Type	Height	Height%	Width	Area	Area %
1	2.796	MF	3.909	0.770	0.054	12.655	0.546
2	2.882	MF	3.172	0.625	0.050	9.521	0.411
3	3.009	FM	495.614	97.679	0.077	2279.921	98.381
4	3.321	FM	2.436	0.480	0.053	7.784	0.336
5	3.540	FM	2.259	0.445	0.056	7.550	0.326

Signal 3: MSD1 TIC, MS File

#	R.T.	Type	Height	Height%	Width	Area	Area %
1	2.857	VV	23963.809	3.975	0.087	128394.344	3.275
2	3.024	VV	560824.625	93.025	0.098	3.722e+006	94.934
3	3.335	MF	18084.199	3.000	0.065	70252.406	1.792



*** End of Report ***