

Current Data Parameters

NAME Sennoside C-1H NMR DMSO
EXPNO 1
PROCNO 1

F2 - Acquisition Parameters

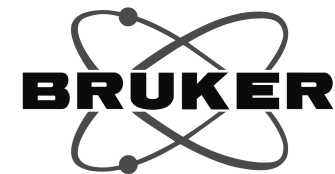
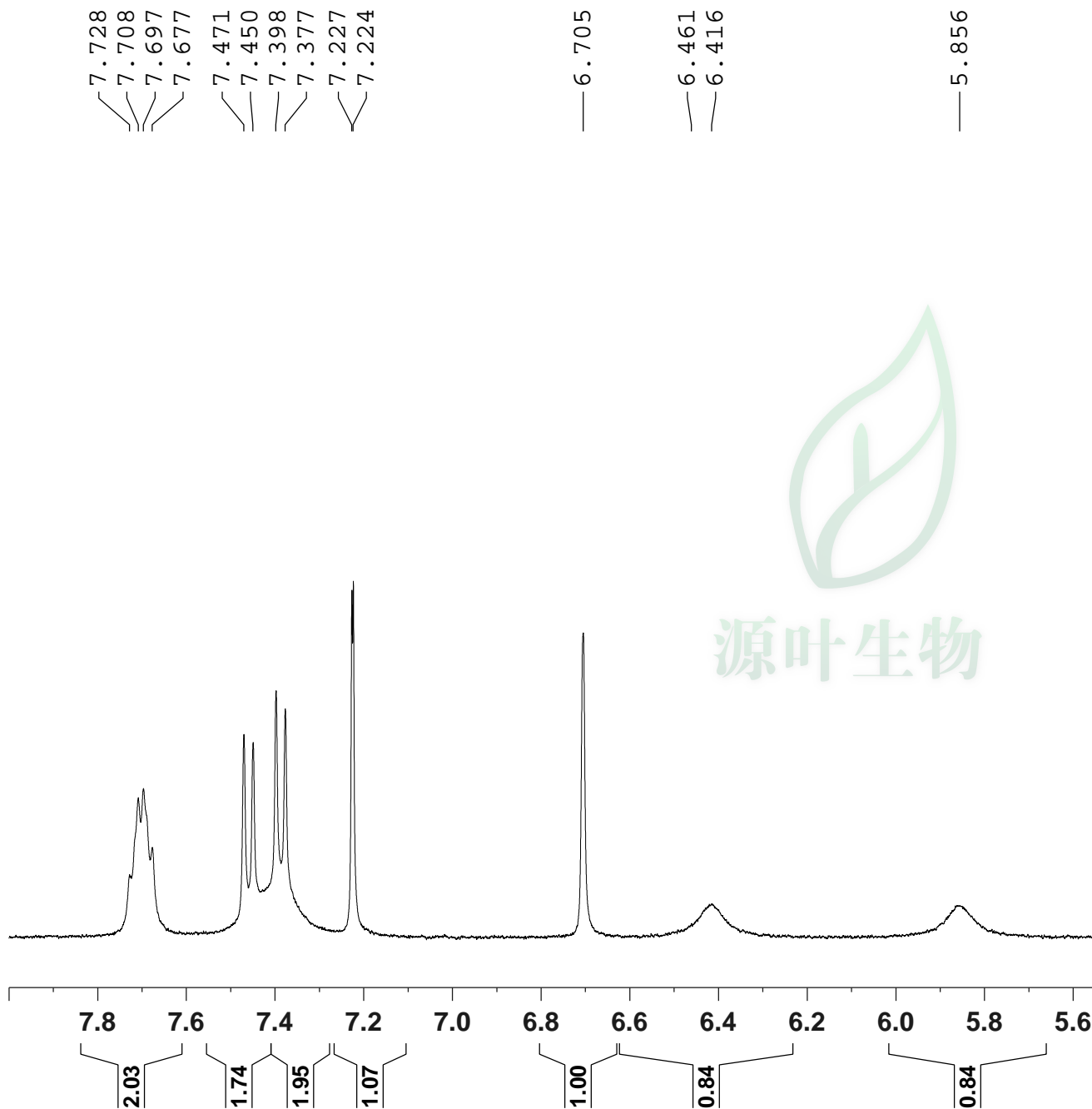
Date_ 20171020
Time 15.21
INSTRUM spect
PROBHD 5 mm PABBO BB/
PULPROG zg30
TD 65536
SOLVENT DMSO
NS 16
DS 2
SWH 8012.820 Hz
FIDRES 0.122266 Hz
AQ 4.0894465 sec
RG 202.5
DW 62.400 usec
DE 6.50 usec
TE 301.1 K
D1 1.00000000 sec
TD0 1

===== CHANNEL f1 =====

SFO1 400.1324710 MHz
NUC1 1H
P1 14.79 usec
PLW1 11.50800037 W

F2 - Processing parameters

SI 262144
SF 400.1300029 MHz
WDW EM
SSB 0
LB 0.30 Hz
GB 0
PC 1.00
SR 2.92 Hz



Current Data Parameters
 NAME Sennoside C-1H NMR DMSO
 EXPNO 1
 PROCNO 1

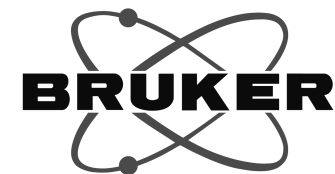
F2 - Acquisition Parameters
 Date_ 20171020
 Time 15.21
 INSTRUM spect
 PROBHD 5 mm PABBO BB/
 PULPROG zg30
 TD 65536
 SOLVENT DMSO
 NS 16
 DS 2
 SWH 8012.820 Hz
 FIDRES 0.122266 Hz
 AQ 4.0894465 sec
 RG 202.5
 DW 62.400 usec
 DE 6.50 usec
 TE 301.1 K
 D1 1.00000000 sec
 TD0 1

===== CHANNEL f1 =====
 SFO1 400.1324710 MHz
 NUC1 1H
 P1 14.79 usec
 PLW1 11.50800037 W

F2 - Processing parameters
 SI 262144
 SF 400.1300029 MHz
 WDW EM
 SSB 0
 LB 0.30 Hz
 GB 0
 PC 1.00
 SR 2.92 Hz

5.124
5.111
5.087
5.073
5.056
5.043
4.959
4.948
4.930
4.916
4.910
4.867
4.856
4.763
4.743
4.689
4.642
4.628
4.613

4.363
4.350



Current Data Parameters

NAME Sennoside C-1H NMR DMSO
EXPNO 1
PROCNO 1

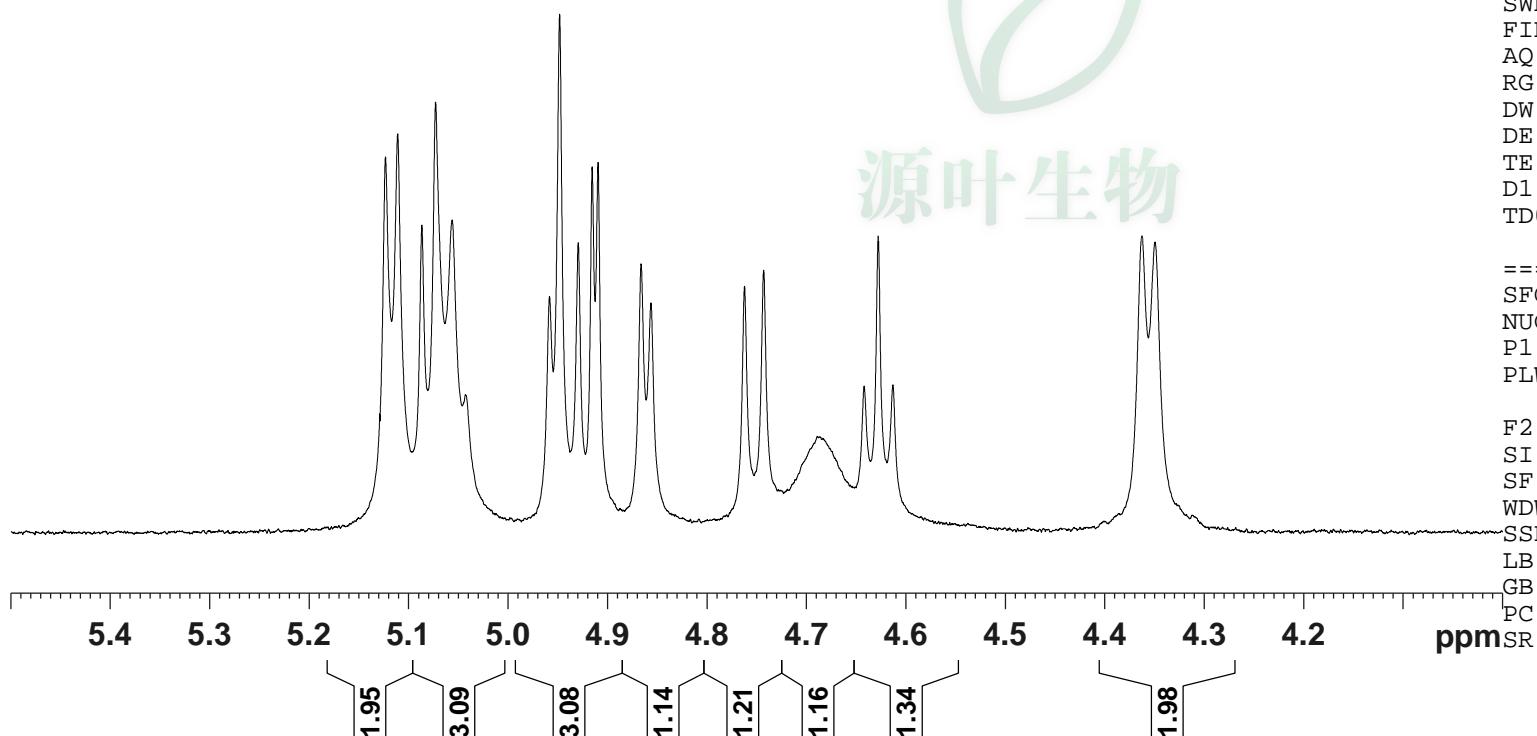
F2 - Acquisition Parameters

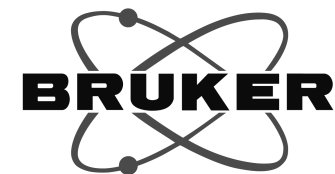
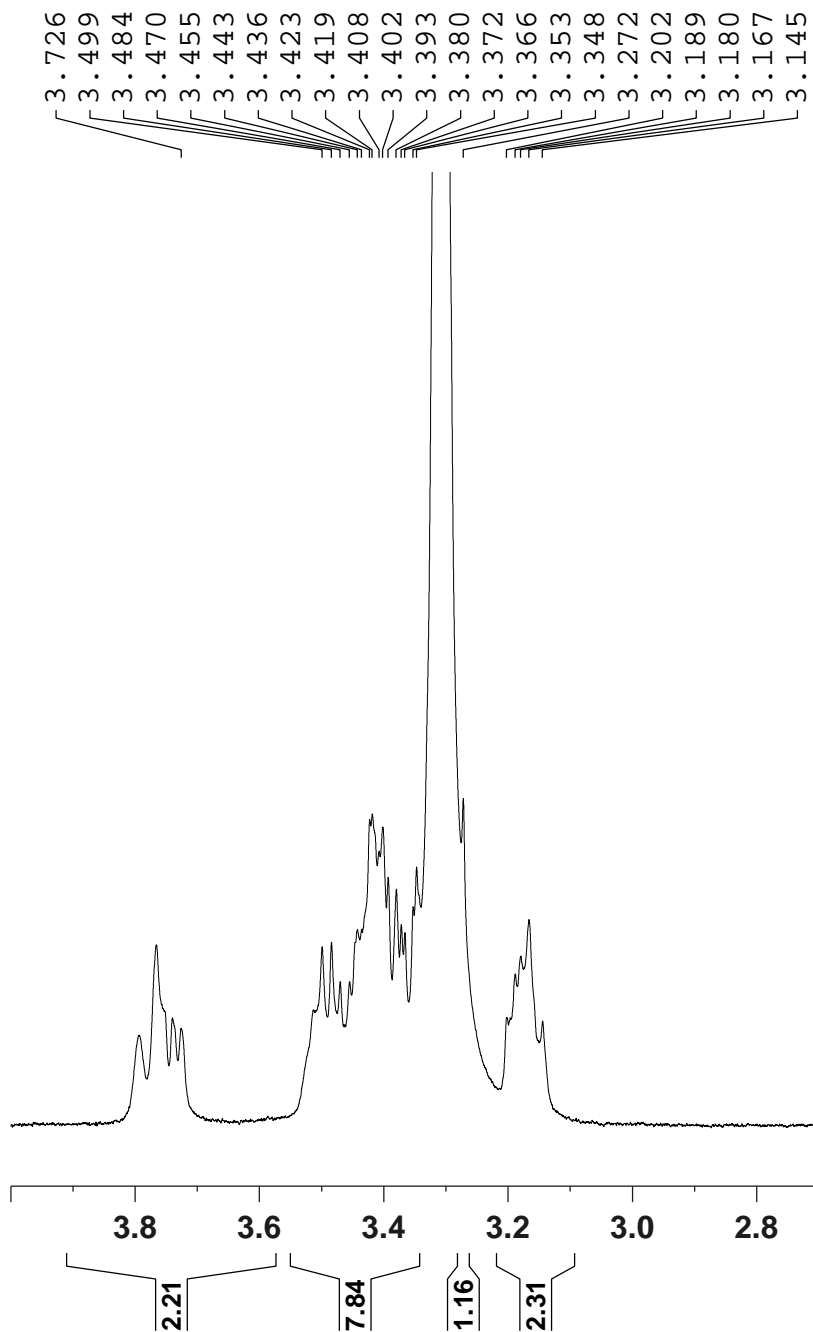
Date_ 20171020
Time 15.21
INSTRUM spect
PROBHD 5 mm PABBO BB/
PULPROG zg30
TD 65536
SOLVENT DMSO
NS 16
DS 2
SWH 8012.820 Hz
FIDRES 0.122266 Hz
AQ 4.0894465 sec
RG 202.5
DW 62.400 usec
DE 6.50 usec
TE 301.1 K
D1 1.00000000 sec
TD0 1

===== CHANNEL f1 =====
SFO1 400.1324710 MHz
NUC1 1H
P1 14.79 usec
PLW1 11.50800037 W

F2 - Processing parameters

SI 262144
SF 400.1300029 MHz
WDW EM
SSB 0
LB 0.30 Hz
GB 0
PC 1.00
SR 2.92 Hz





Current Data Parameters
 NAME Sennoside C-1H NMR DMSO
 EXPNO 1
 PROCNO 1

F2 - Acquisition Parameters
 Date_ 20171020
 Time 15.21
 INSTRUM spect
 PROBHD 5 mm PABBO BB/
 PULPROG zg30
 TD 65536
 SOLVENT DMSO
 NS 16
 DS 2
 SWH 8012.820 Hz
 FIDRES 0.122266 Hz
 AQ 4.0894465 sec
 RG 202.5
 DW 62.400 usec
 DE 6.50 usec
 TE 301.1 K
 D1 1.00000000 sec
 TD0 1

===== CHANNEL f1 =====
 SF01 400.1324710 MHz
 NUC1 1H
 P1 14.79 usec
 PLW1 11.50800037 W

F2 - Processing parameters
 SI 262144
 SF 400.1300029 MHz
 WDW EM
 SSB 0
 LB 0.30 Hz
 GB 0
 PC 1.00
 SR 2.92 Hz