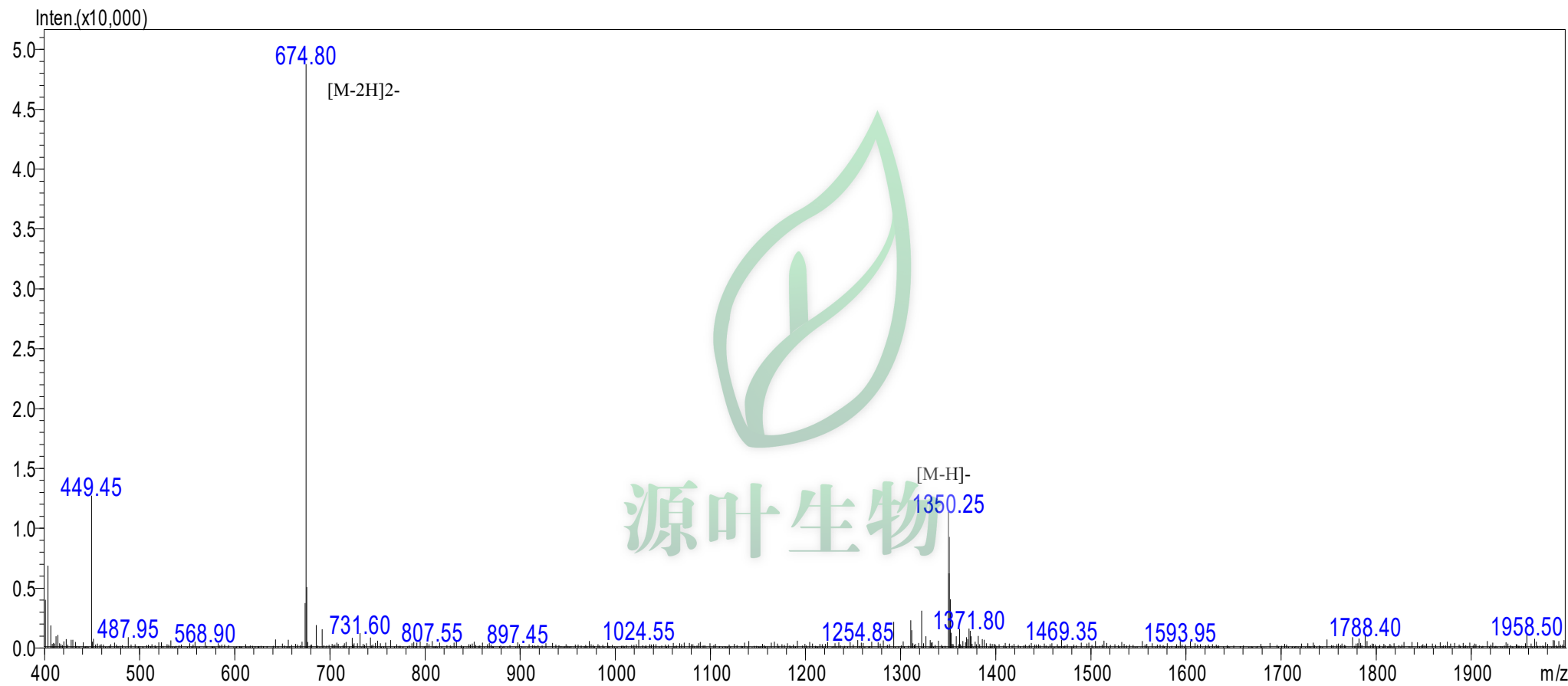


MASS SPECTROMETRY REPORT



Sample Description		Instrument		SHIMADZU LCMS-2020	
Analyzed date:	2017-12-14	Probe:	ESI	Probe Bias:	+4.5kv
Analyst:	SHAO	Nebulizer Gas Flow:	1.5L/min	Detector:	1.5kv
Sample:	雨蛙素	CDL:	-20.0v	T. Flow:	0.2ml/min
M.W.:	1352.4	CDL Temp.:	250℃	B. Conc.:	50%H2O/50%ACN
Lot. No.:	NJP9000-190225	Block Temp.:	200℃		