

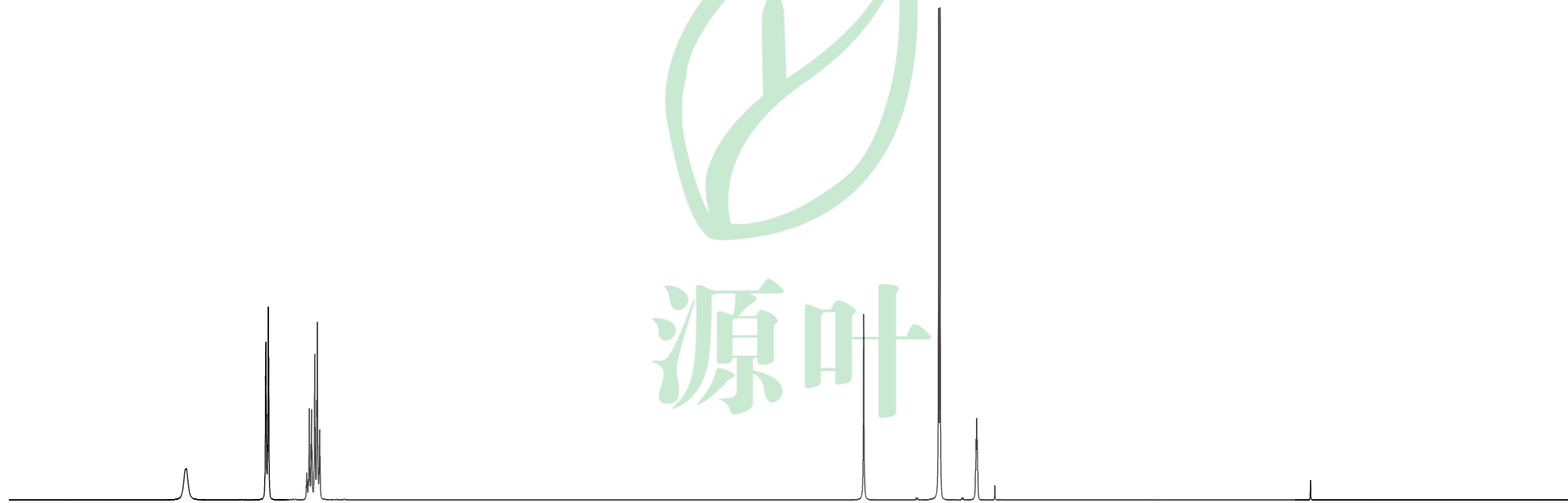


164083

7.842
7.837
7.834
7.830
7.822
7.816
7.813
7.527
7.524
7.516
7.509
7.503
7.495
7.491
7.487
7.467
7.464
7.452
7.448
7.435
7.431
7.427

3.348
2.786
2.774
2.509
2.505
2.500
2.495
2.491

—0.005



1.00

2.00

3.01

3.02

ppm