

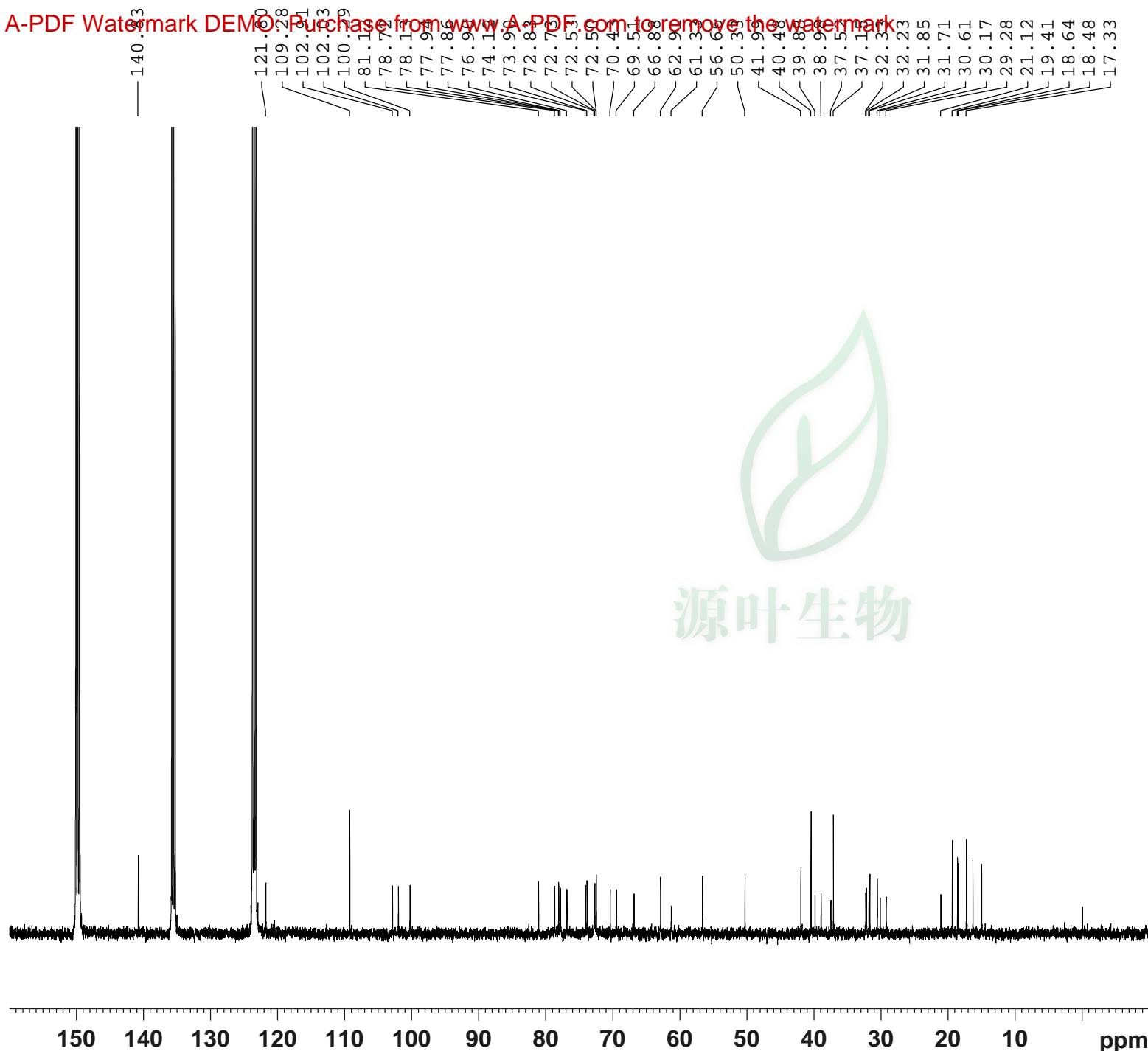
Current Data Parameters
 NAME 8041242-13C NMR C5D5N
 EXPNO 2
 PROCNO 1

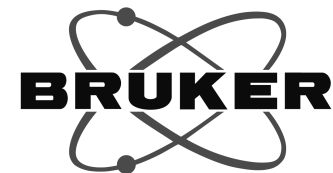
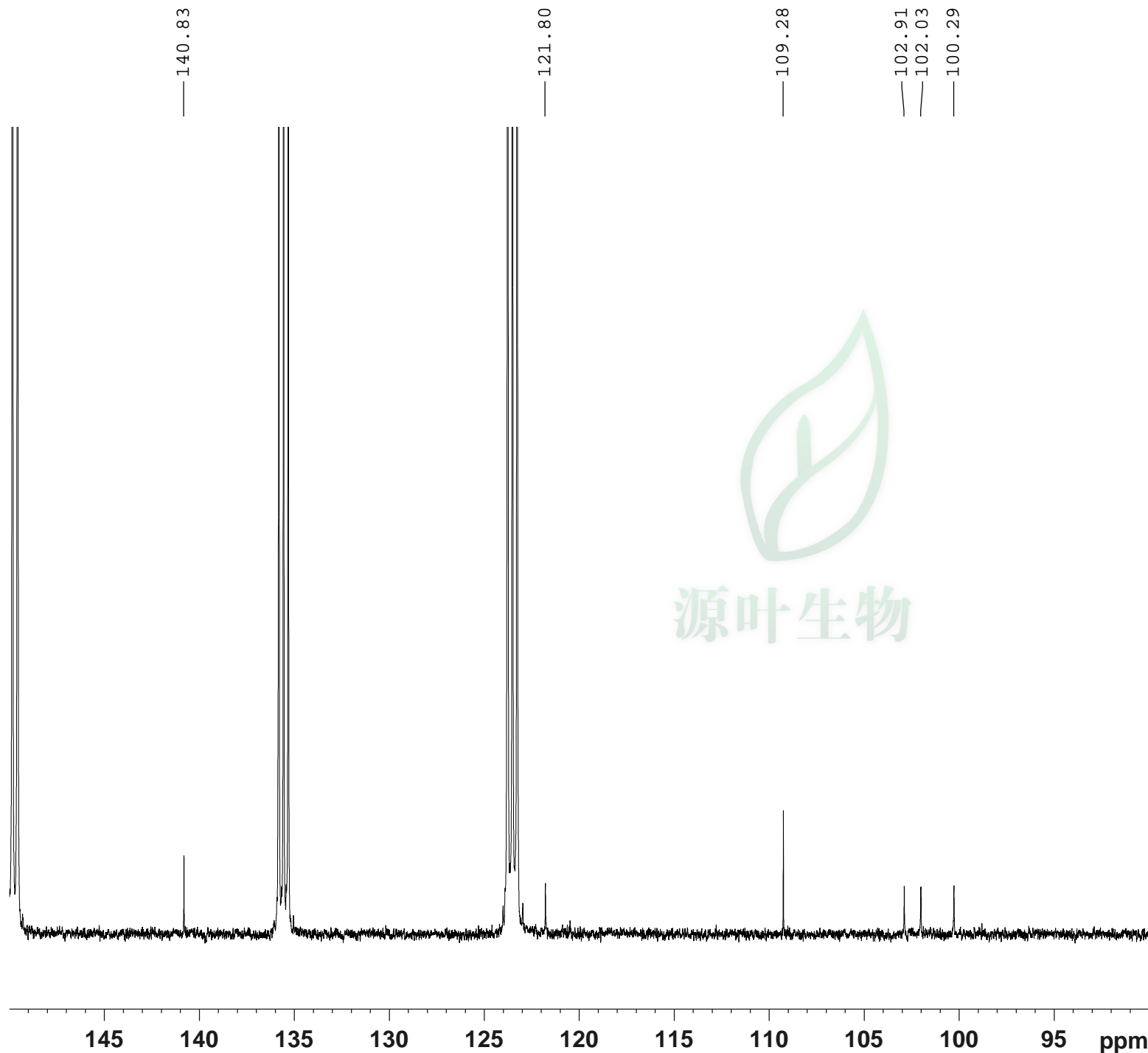
F2 - Acquisition Parameters
 Date_ 20181111
 Time 12.12
 INSTRUM spect
 PROBHD 5 mm PABBO BB/
 PULPROG zgig30
 TD 65536
 SOLVENT Pyr
 NS 740
 DS 4
 SWH 24038.461 Hz
 FIDRES 0.366798 Hz
 AQ 1.3631488 sec
 RG 202.5
 DW 20.800 usec
 DE 6.50 usec
 TE 301.2 K
 D1 2.00000000 sec
 D11 0.03000000 sec
 TD0 1

===== CHANNEL f1 =====
 SFO1 100.6228298 MHz
 NUC1 13C
 P1 10.79 usec
 PLW1 51.00000000 W

===== CHANNEL f2 =====
 SFO2 400.1316005 MHz
 NUC2 1H
 CPDPRG[2] waltz16
 PCPD2 90.00 usec
 PLW2 11.50800037 W
 PLW12 0.33519000 W

F2 - Processing parameters
 SI 262144
 SF 100.6127448 MHz
 WDW EM
 SSB 0
 LB 1.00 Hz
 GB 0
 PC 1.40
 SINO 0





Current Data Parameters

NAME 8041242-13C NMR C5D5N
EXPNO 2
PROCNO 1

F2 - Acquisition Parameters

Date_ 20181111
Time 12.12
INSTRUM spect
PROBHD 5 mm PABBO BB/
PULPROG zgig30
TD 65536
SOLVENT Pyr
NS 740
DS 4
SWH 24038.461 Hz
FIDRES 0.366798 Hz
AQ 1.3631488 sec
RG 202.5
DW 20.800 usec
DE 6.50 usec
TE 301.2 K
D1 2.00000000 sec
D11 0.03000000 sec
TD0 1

===== CHANNEL f1 =====

SFO1 100.6228298 MHz
NUC1 13C
P1 10.79 usec
PLW1 51.00000000 W

===== CHANNEL f2 =====

SFO2 400.1316005 MHz
NUC2 1H
CPDPRG[2] waltz16
PCPD2 90.00 usec
PLW2 11.50800037 W
PLW12 0.33519000 W

F2 - Processing parameters

SI 262144
SF 100.6127448 MHz
WDW EM
SSB 0
LB 1.00 Hz
GB 0
PC 1.40
SINO 0

— 81.12

— 78.72

— 78.13

— 77.94

— 77.86

— 76.90

— 74.12

— 73.90

— 72.83

— 72.73

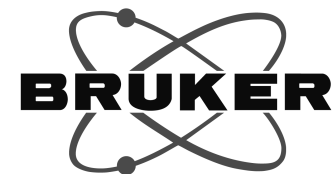
— 72.53

— 72.50

— 70.43

— 69.51

— 66.88



Current Data Parameters

NAME 8041242-13C NMR C5D5N
EXPNO 2
PROCNO 1

F2 - Acquisition Parameters

Date_ 20181111
Time 12.12
INSTRUM spect
PROBHD 5 mm PABBO BB/
PULPROG zgig30
TD 65536
SOLVENT Pyr
NS 740
DS 4
SWH 24038.461 Hz
FIDRES 0.366798 Hz
AQ 1.3631488 sec
RG 202.5
DW 20.800 usec
DE 6.50 usec
TE 301.2 K
D1 2.00000000 sec
D11 0.03000000 sec
TD0 1

===== CHANNEL f1 =====

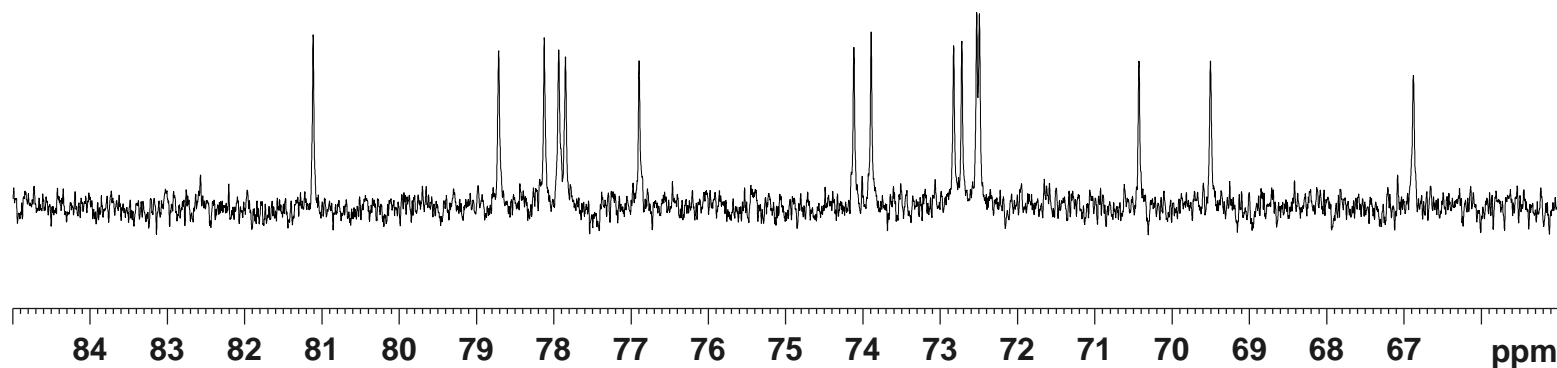
SFO1 100.6228298 MHz
NUC1 13C
P1 10.79 usec
PLW1 51.00000000 W

===== CHANNEL f2 =====

SFO2 400.1316005 MHz
NUC2 1H
CPDPRG[2] waltz16
PCPD2 90.00 usec
PLW2 11.50800037 W
PLW12 0.33519000 W

F2 - Processing parameters

SI 262144
SF 100.6127448 MHz
WDW EM
SSB 0
LB 1.00 Hz
GB 0
PC 1.40
SINO 0

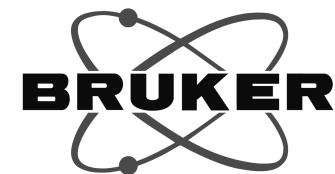


— 62.91

— 61.33

— 56.66

— 50.33



Current Data Parameters

NAME 8041242-13C NMR C5D5N
EXPNO 2
PROCNO 1

F2 - Acquisition Parameters

Date_ 20181111
Time 12.12
INSTRUM spect
PROBHD 5 mm PABBO BB/
PULPROG zgig30
TD 65536
SOLVENT Pyr
NS 740
DS 4
SWH 24038.461 Hz
FIDRES 0.366798 Hz
AQ 1.3631488 sec
RG 202.5
DW 20.800 usec
DE 6.50 usec
TE 301.2 K
D1 2.00000000 sec
D11 0.03000000 sec
TD0 1

===== CHANNEL f1 =====

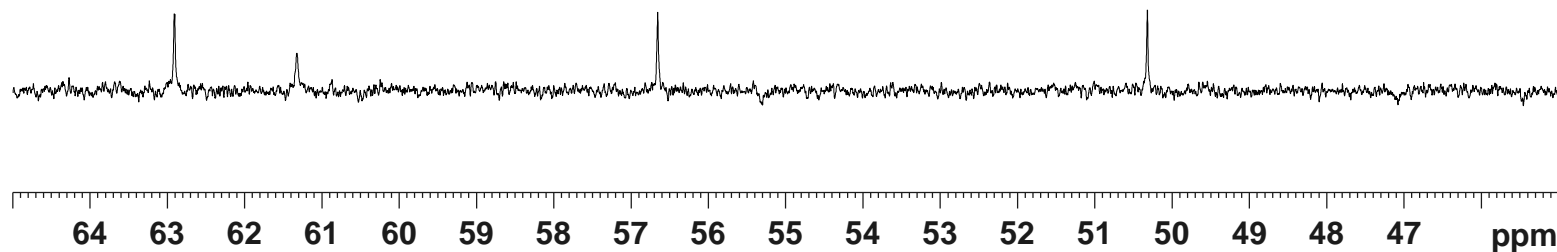
SFO1 100.6228298 MHz
NUC1 13C
P1 10.79 usec
PLW1 51.00000000 W

===== CHANNEL f2 =====

SFO2 400.1316005 MHz
NUC2 1H
CPDPRG[2] waltz16
PCPD2 90.00 usec
PLW2 11.50800037 W
PLW12 0.33519000 W

F2 - Processing parameters

SI 262144
SF 100.6127448 MHz
WDW EM
SSB 0
LB 1.00 Hz
GB 0
PC 1.40
SINO 0



—41.99

—40.48

—39.88

—38.98

—37.52

—37.15

—32.33

—32.23

—31.85

—31.71

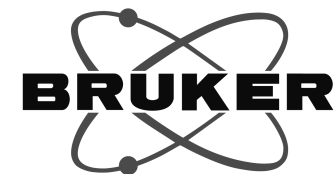
—30.61

—30.17

—29.28



源叶生物



Current Data Parameters

NAME 8041242-13C NMR C5D5N
EXPNO 2
PROCNO 1

F2 - Acquisition Parameters

Date_ 20181111
Time 12.12
INSTRUM spect
PROBHD 5 mm PABBO BB/
PULPROG zgig30
TD 65536
SOLVENT Pyr
NS 740
DS 4
SWH 24038.461 Hz
FIDRES 0.366798 Hz
AQ 1.3631488 sec
RG 202.5
DW 20.800 usec
DE 6.50 usec
TE 301.2 K
D1 2.00000000 sec
D11 0.03000000 sec
TD0 1

===== CHANNEL f1 =====

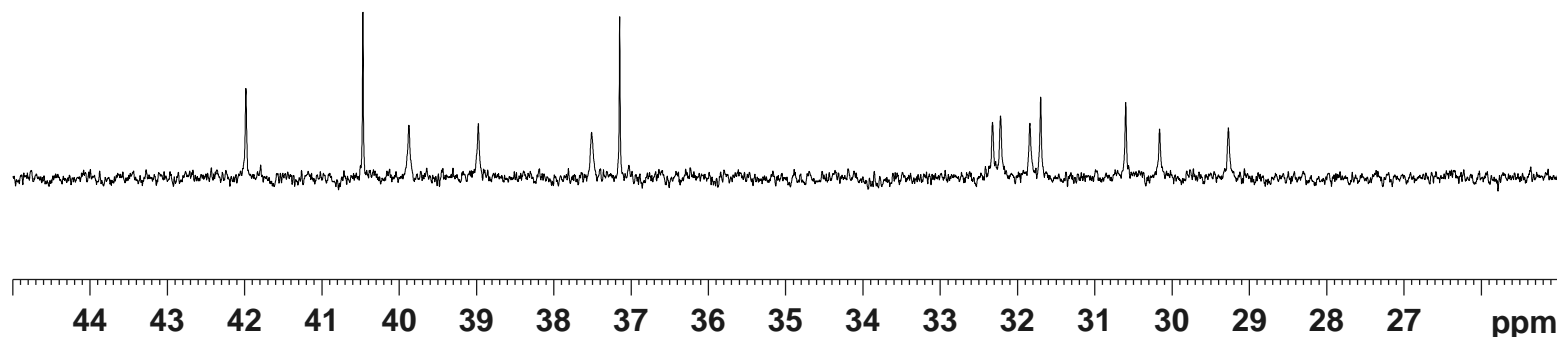
SFO1 100.6228298 MHz
NUC1 13C
P1 10.79 usec
PLW1 51.00000000 W

===== CHANNEL f2 =====

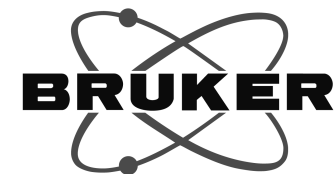
SFO2 400.1316005 MHz
NUC2 1H
CPDPRG[2] waltz16
PCPD2 90.00 usec
PLW2 11.50800037 W
PLW12 0.33519000 W

F2 - Processing parameters

SI 262144
SF 100.6127448 MHz
WDW EM
SSB 0
LB 1.00 Hz
GB 0
PC 1.40
SINO 0



—21.12
—19.41
—18.64
—18.48
—17.33
—16.34
—15.03



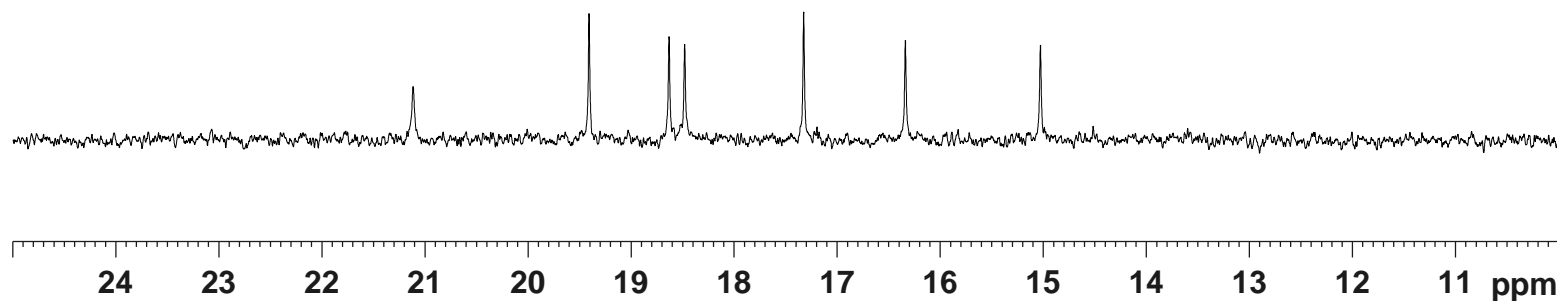
Current Data Parameters
NAME 8041242-13C NMR C5D5N
EXPNO 2
PROCNO 1

F2 - Acquisition Parameters
Date_ 20181111
Time 12.12
INSTRUM spect
PROBHD 5 mm PABBO BB/
PULPROG zgig30
TD 65536
SOLVENT Pyr
NS 740
DS 4
SWH 24038.461 Hz
FIDRES 0.366798 Hz
AQ 1.3631488 sec
RG 202.5
DW 20.800 usec
DE 6.50 usec
TE 301.2 K
D1 2.00000000 sec
D11 0.03000000 sec
TD0 1

===== CHANNEL f1 =====
SFO1 100.6228298 MHz
NUC1 13C
P1 10.79 usec
PLW1 51.00000000 W

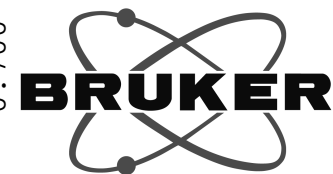
===== CHANNEL f2 =====
SFO2 400.1316005 MHz
NUC2 1H
CPDPRG[2] waltz16
PCPD2 90.00 usec
PLW2 11.50800037 W
PLW12 0.33519000 W

F2 - Processing parameters
SI 262144
SF 100.6127448 MHz
WDW EM
SSB 0
LB 1.00 Hz
GB 0
PC 1.40
SINO 0



源叶生物

6.723
6.709
6.370
6.368
5.832
5.829
4.952
4.944
4.933
4.914
4.821
4.817
4.670
4.543
4.522
4.375
4.369
4.352
4.345
4.322
4.212
4.204
1.828
1.811
1.807
1.770
1.755
1.730
1.720
1.681
1.673
1.630
1.615
1.591
1.584
1.573
1.459
1.448
1.154
1.136
1.056
0.838
0.715
0.700

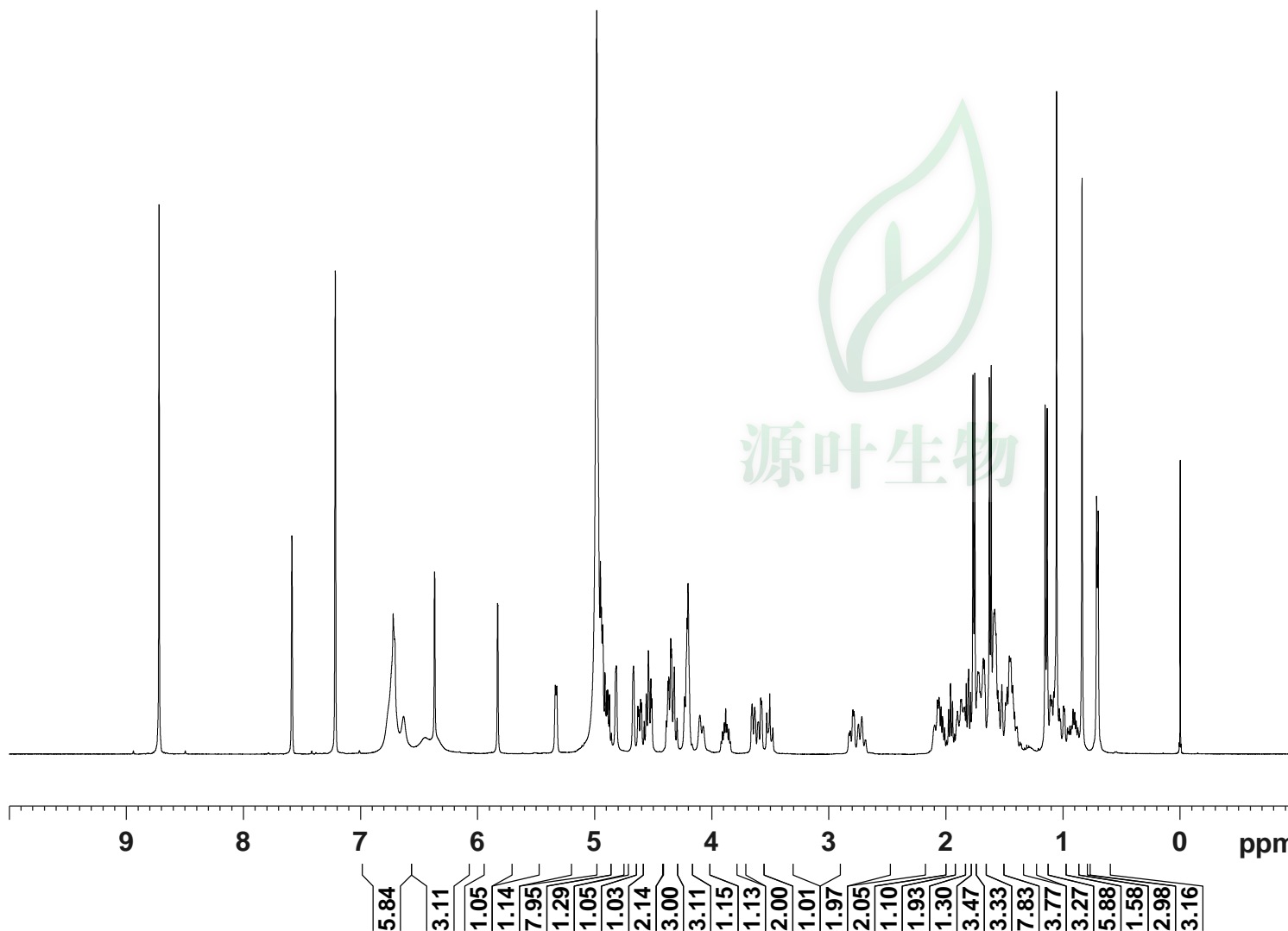


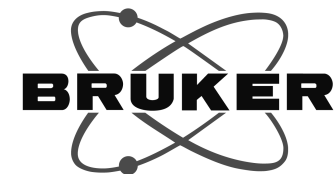
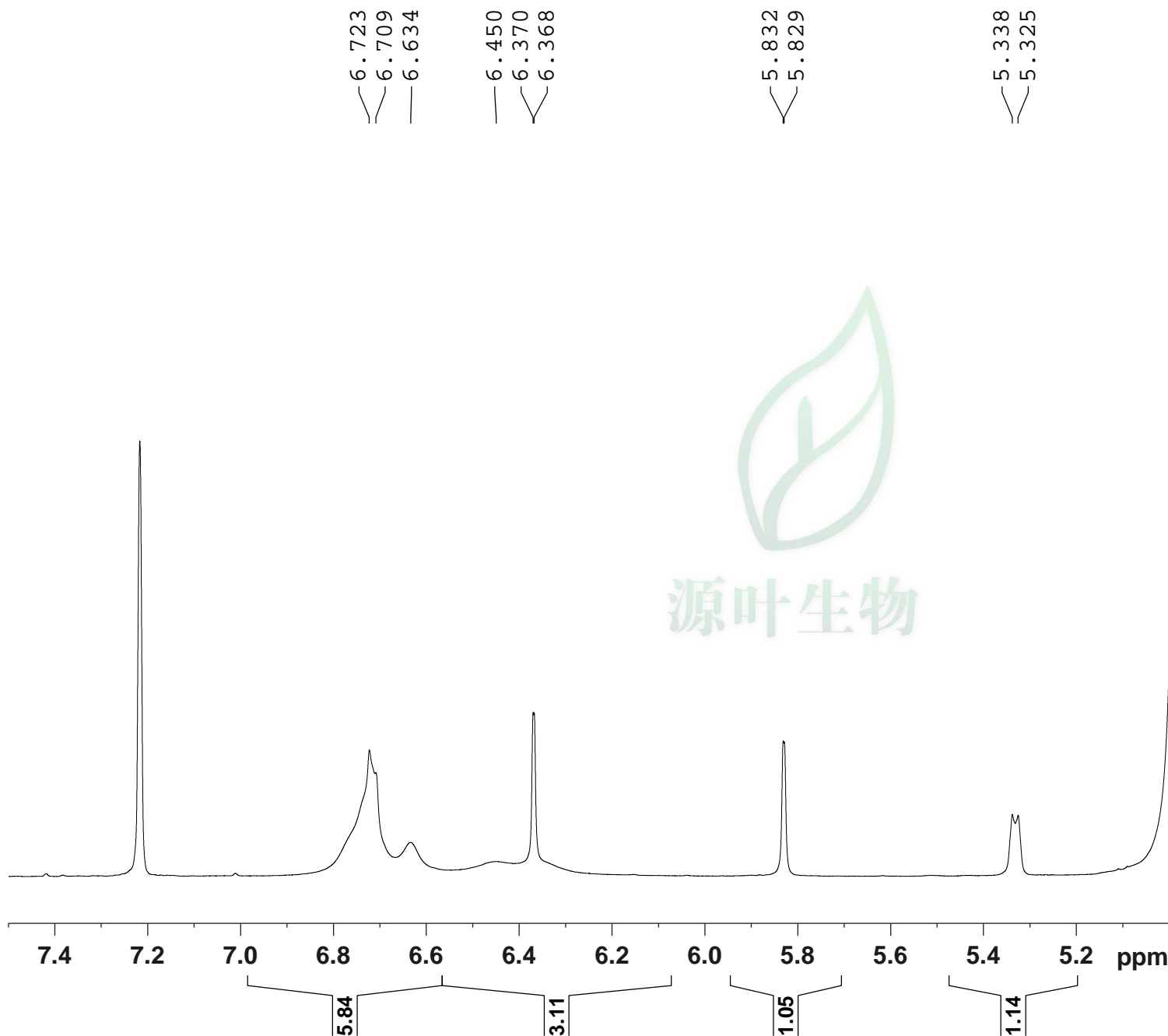
Current Data Parameters
NAME 8041242-1H NMR C5D5N
EXPNO 2
PROCNO 1

F2 - Acquisition Parameters
Date_ 20181111
Time 11.49
INSTRUM spect
PROBHD 5 mm PABBO BB/
PULPROG zg30
TD 65536
SOLVENT Pyr
NS 16
DS 2
SWH 8012.820 Hz
FIDRES 0.122266 Hz
AQ 4.0894465 sec
RG 44.78
DW 62.400 usec
DE 6.50 usec
TE 301.2 K
D1 1.00000000 sec
TD0 1

===== CHANNEL f1 =====
SFO1 400.1324710 MHz
NUC1 1H
P1 15.36 usec
PLW1 11.50800037 W

F2 - Processing parameters
SI 262144
SF 400.1299931 MHz
WDW EM
SSB 0
LB 0.30 Hz
GB 0
PC 1.00
SINO 0





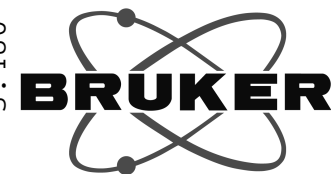
Current Data Parameters
 NAME 8041242-1H NMR C5D5N
 EXPNO 2
 PROCNO 1

F2 - Acquisition Parameters
 Date_ 20181111
 Time 11.49
 INSTRUM spect
 PROBHD 5 mm PABBO BB/
 PULPROG zg30
 TD 65536
 SOLVENT Pyr
 NS 16
 DS 2
 SWH 8012.820 Hz
 FIDRES 0.122266 Hz
 AQ 4.0894465 sec
 RG 44.78
 DW 62.400 usec
 DE 6.50 usec
 TE 301.2 K
 D1 1.00000000 sec
 TD0 1

===== CHANNEL f1 =====
 SFO1 400.1324710 MHz
 NUC1 1H
 P1 15.36 usec
 PLW1 11.50800037 W

F2 - Processing parameters
 SI 262144
 SF 400.1299931 MHz
 WDW EM
 SSB 0
 LB 0.30 Hz
 GB 0
 PC 1.00
 SINO 0

4.952
4.944
4.933
4.914
4.906
4.898
4.890
4.875
4.821
4.817
4.670
4.633
4.625
4.610
4.602
4.579
4.560
4.543
4.522
4.513
4.391
4.375
4.369
4.352
4.345
4.322
4.298
4.234
4.212
4.204
4.103
4.074
3.894
3.882
3.870
3.855
3.656
3.635
3.604
3.583
3.575
3.532
3.506
3.480



Current Data Parameters

NAME 8041242-1H NMR C5D5N
EXPNO 2
PROCNO 1

F2 - Acquisition Parameters

Date_ 20181111
Time 11.49
INSTRUM spect
PROBHD 5 mm PABBO BB/
PULPROG zg30
TD 65536
SOLVENT Pyr
NS 16
DS 2
SWH 8012.820 Hz
FIDRES 0.122266 Hz
AQ 4.0894465 sec
RG 44.78
DW 62.400 usec
DE 6.50 usec
TE 301.2 K
D1 1.00000000 sec
TD0 1

===== CHANNEL f1 =====

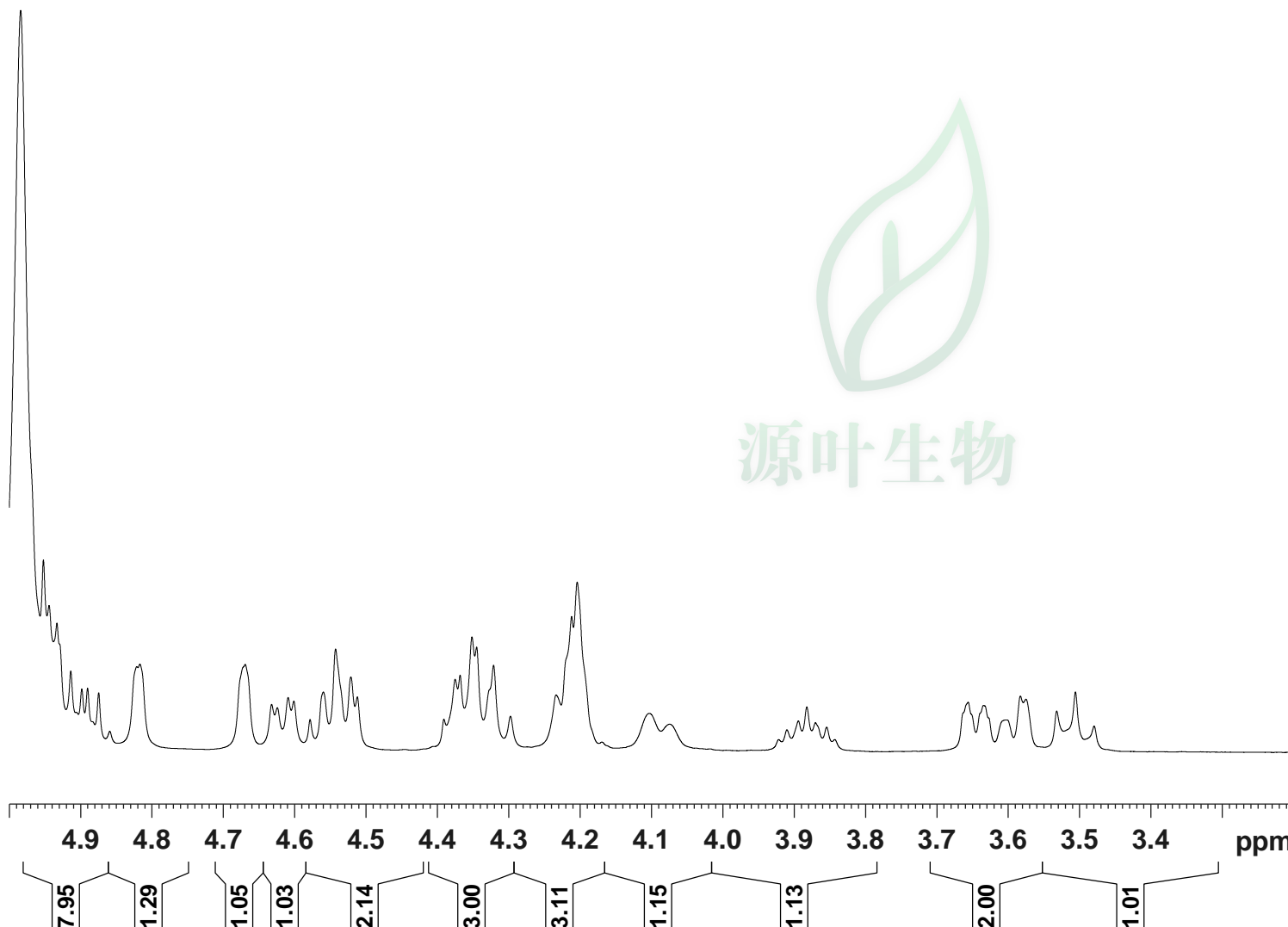
SFO1 400.1324710 MHz
NUC1 1H
P1 15.36 usec
PLW1 11.50800037 W

F2 - Processing parameters

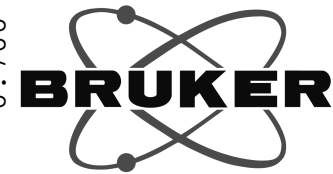
SI 262144
SF 400.1299931 MHz
WDW EM
SSB 0
LB 0.30 Hz
GB 0
PC 1.00
SINO 0



源叶生物



2.074
2.060
2.043
1.962
1.945
1.875
1.869
1.850
1.844
1.828
1.811
1.807
1.791
1.770
1.755
1.730
1.720
1.709
1.681
1.673
1.630
1.615
1.591
1.584
1.573
1.557
1.547
1.523
1.493
1.488
1.478
1.459
1.448
1.430
1.154
1.136
1.109
1.098
1.080
1.056
0.996
0.838
0.715
0.700



Current Data Parameters
NAME 8041242-1H NMR C5D5N
EXPNO 2
PROCNO 1

F2 - Acquisition Parameters
Date_ 20181111
Time 11.49
INSTRUM spect
PROBHD 5 mm PABBO BB/
PULPROG zg30
TD 65536
SOLVENT Pyr
NS 16
DS 2
SWH 8012.820 Hz
FIDRES 0.122266 Hz
AQ 4.0894465 sec
RG 44.78
DW 62.400 usec
DE 6.50 usec
TE 301.2 K
D1 1.00000000 sec
TD0 1

===== CHANNEL f1 =====
SFO1 400.1324710 MHz
NUC1 1H
P1 15.36 usec
PLW1 11.50800037 W

F2 - Processing parameters
SI 262144
SF 400.1299931 MHz
WDW EM
SSB 0
LB 0.30 Hz
GB 0
PC 1.00
SINO 0

