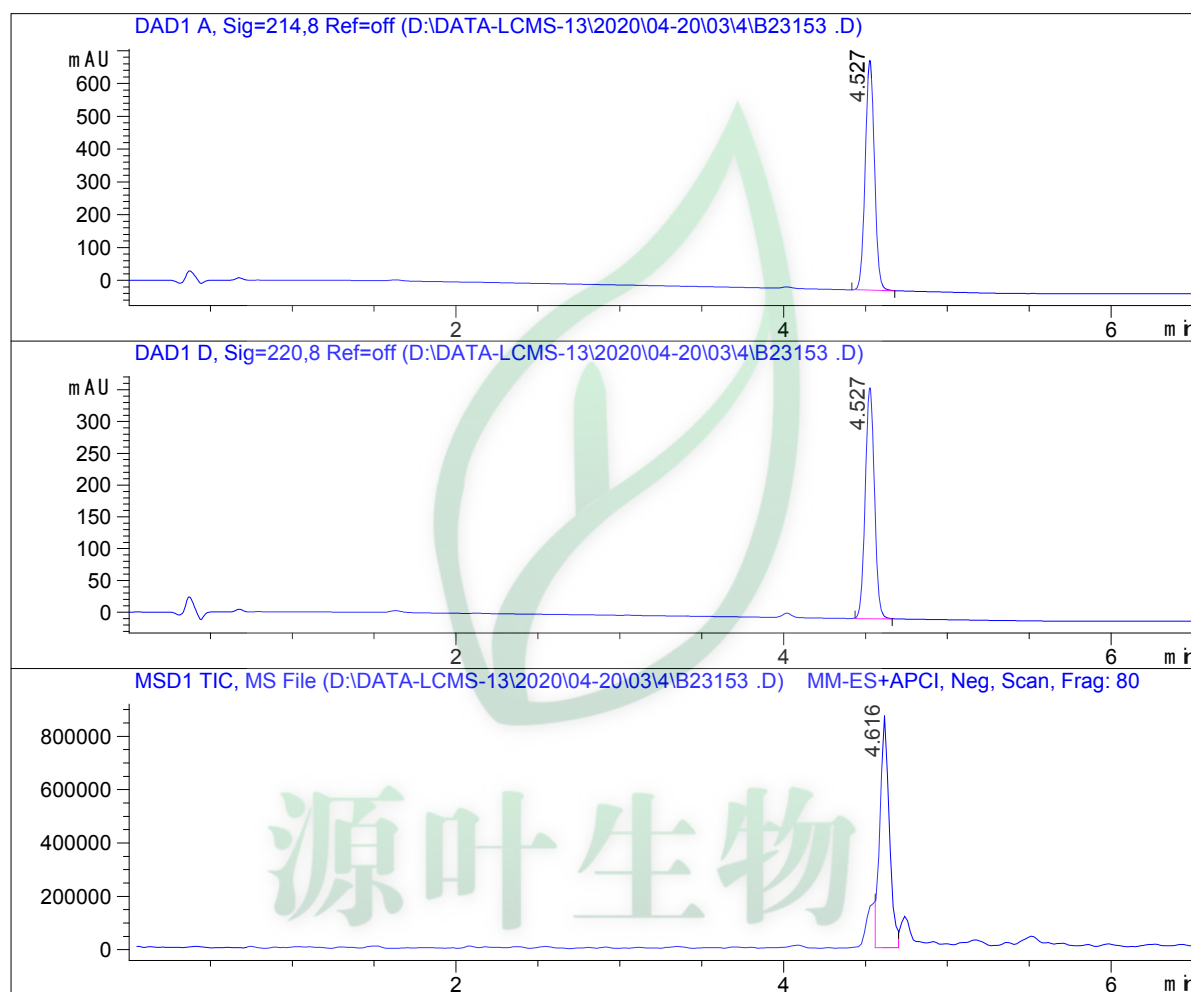


LCMS Report

Sample Name : B23153
Data File : D:\DATA-LCMS-13\2020\04-20\03\4\B23153.D
Injection Date : Fri, 3. Apr. 2020 Inj. Vol. : 5ul
Acq Operator : LCMS-13 Location : Vial 53
Acq. Method : D:\data-lcms-13\2020\04-20\03\4\N-40-95.M
Method Info. : column:Xbridge C18 5um 4.6*30mm ;mobile phase:B (ACN),
A(0.02%NH4Ac); gradient(B%):as Acq.Method above



Integration Results

Signal 1: DAD1 A, Sig=214,8 Ref=off

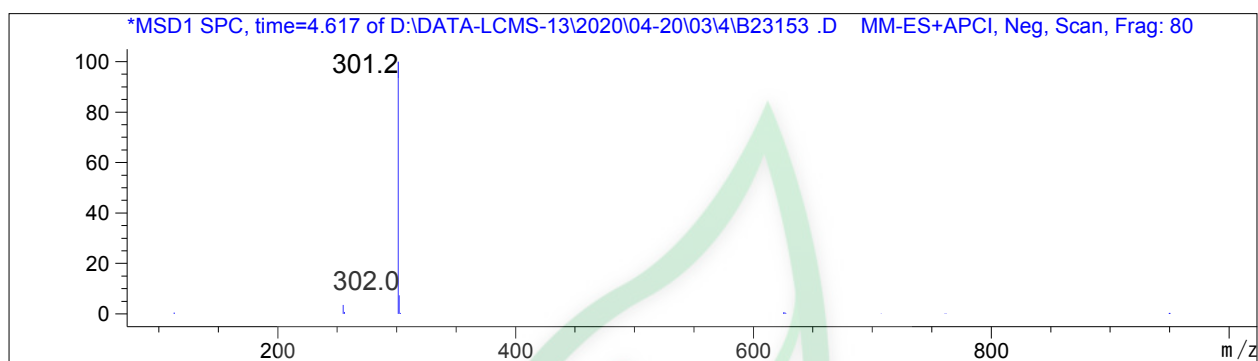
#	R.T.	Type	Height	Height%	Width	Area	Area %
1	4.527	MM	706.679	100.000	0.065	2746.050	100.000

Signal 2: DAD1 D, Sig=220,8 Ref=off

#	R.T.	Type	Height	Height%	Width	Area	Area %
1	4.527	BB	365.685	100.000	0.061	1426.081	100.000

Signal 3: MSD1 TIC, MS File

#	R.T.	Type	Height	Height%	Width	Area	Area %
1	4.616	FM	887519.438	100.000	0.063	3.373e+006	100.000



*** End of Report ***

源叶生物