

Current Data Parameters
NAME 15060702
EXPNO 2
PROCNO 1

F2 - Acquisition Parameters
Date_ 20150913
Time 22.39
INSTRUM spect
PROBHD 5 mm PABBO BB-
PULPROG zgpg30
TD 65536
SOLVENT CDC13
NS 1024
DS 4
SWH 24038.461 Hz
FIDRES 0.366798 Hz
AQ 1.3631488 sec
RG 203
DW 20.800 usec
DE 6.50 usec
TE 297.6 K
D1 2.00000000 sec
D11 0.03000000 sec
TD0 1

===== CHANNEL f1 =====
SFO1 100.6233333 MHz
NUC1 13C
P1 9.20 usec
PLW1 60.00000000 W

===== CHANNEL f2 =====
SFO2 400.1316005 MHz
NUC2 1H
CPDPRG[2] waltz16
PCPD2 90.00 usec
PLW2 15.00000000 W
PLW12 0.31876999 W
PLW13 0.25819999 W

F2 - Processing parameters
SI 32768
SF 100.6127507 MHz
WDW EM
SSB 0
LB 1.00 Hz
GB 0
PC 1.40



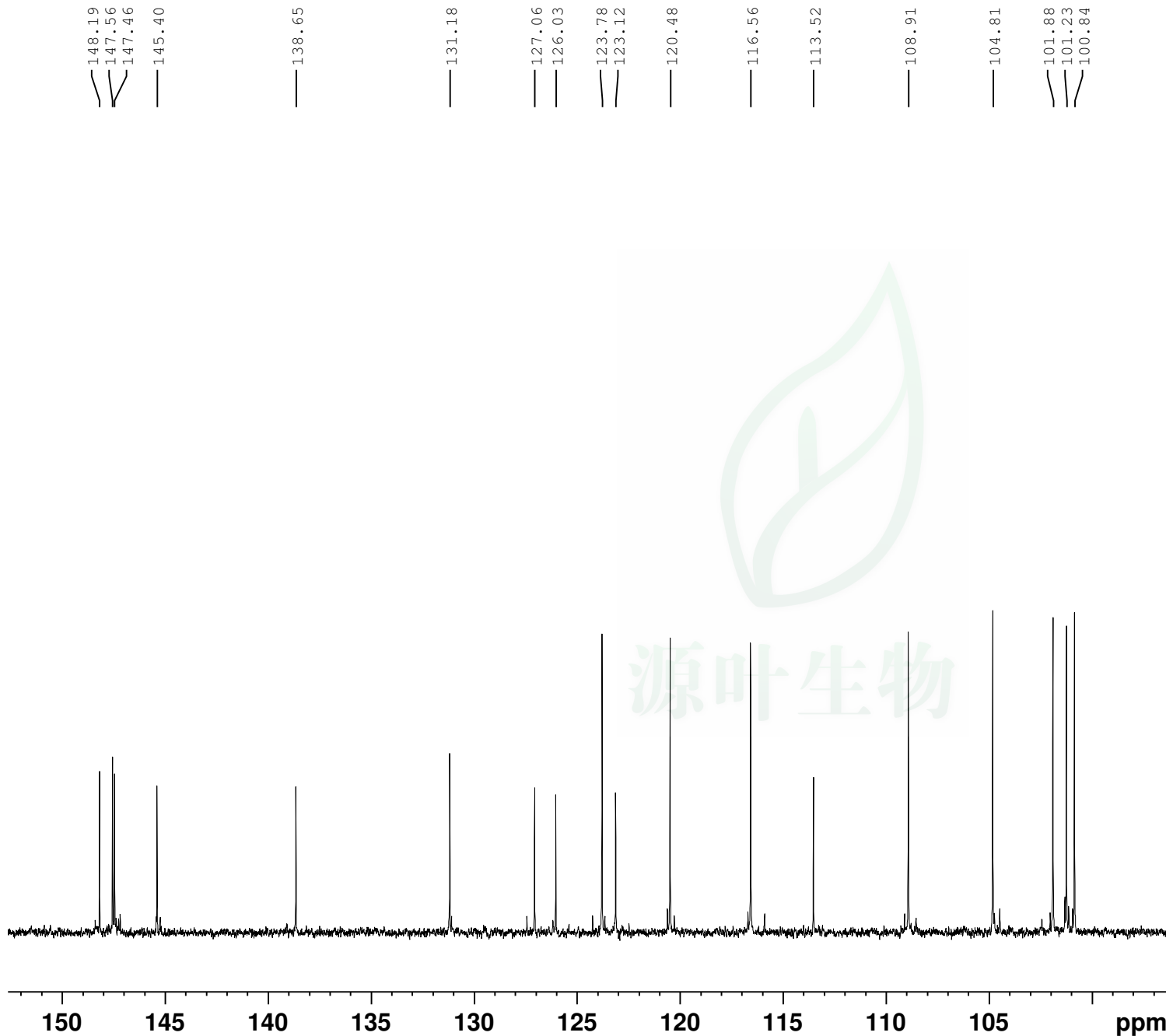
Current Data Parameters
NAME 15060702
EXPNO 2
PROCNO 1

F2 - Acquisition Parameters
Date_ 20150913
Time 22.39
INSTRUM spect
PROBHD 5 mm PABBO BB-
PULPROG zgpg30
TD 65536
SOLVENT CDC13
NS 1024
DS 4
SWH 24038.461 Hz
FIDRES 0.366798 Hz
AQ 1.3631488 sec
RG 203
DW 20.800 usec
DE 6.50 usec
TE 297.6 K
D1 2.00000000 sec
D11 0.03000000 sec
TD0 1

===== CHANNEL f1 =====
SFO1 100.6233333 MHz
NUC1 13C
P1 9.20 usec
PLW1 60.00000000 W

===== CHANNEL f2 =====
SFO2 400.1316005 MHz
NUC2 1H
CPDPRG[2] waltz16
PCPD2 90.00 usec
PLW2 15.00000000 W
PLW12 0.31876999 W
PLW13 0.25819999 W

F2 - Processing parameters
SI 32768
SF 100.6127507 MHz
WDW EM
SSB 0
LB 1.00 Hz
GB 0
PC 1.40





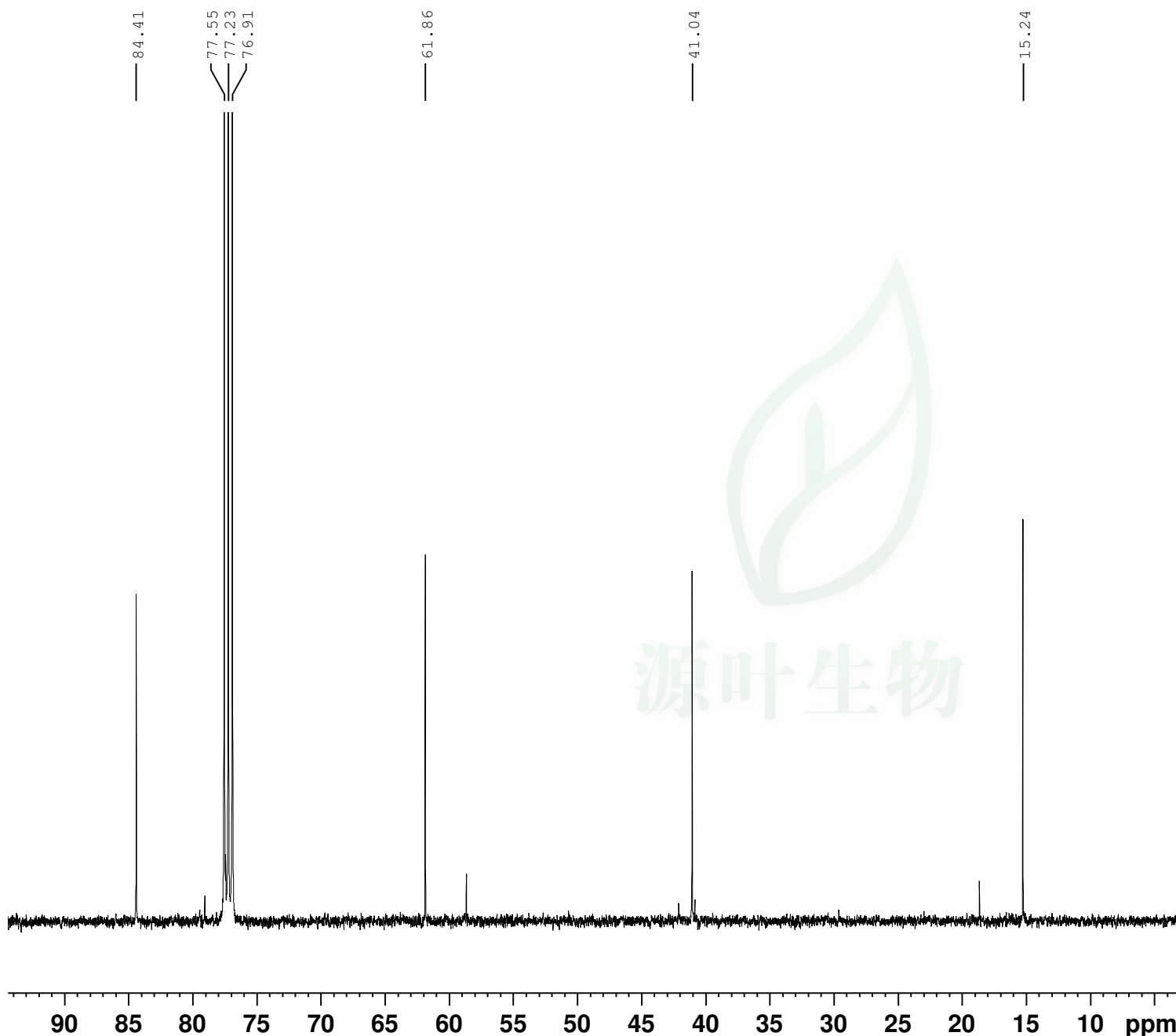
Current Data Parameters
NAME 15060702
EXPNO 2
PROCNO 1

F2 - Acquisition Parameters
Date_ 20150913
Time 22.39
INSTRUM spect
PROBHD 5 mm PABBO BB-
PULPROG zgpg30
TD 65536
SOLVENT CDC13
NS 1024
DS 4
SWH 24038.461 Hz
FIDRES 0.366798 Hz
AQ 1.3631488 sec
RG 203
DW 20.800 usec
DE 6.50 usec
TE 297.6 K
D1 2.00000000 sec
D11 0.03000000 sec
TD0 1

===== CHANNEL f1 =====
SFO1 100.6233333 MHz
NUC1 13C
P1 9.20 usec
PLW1 60.00000000 W

===== CHANNEL f2 =====
SFO2 400.1316005 MHz
NUC2 1H
CPDPRG[2] waltz16
PCPD2 90.00 usec
PLW2 15.00000000 W
PLW12 0.31876999 W
PLW13 0.25819999 W

F2 - Processing parameters
SI 32768
SF 100.6127507 MHz
WDW EM
SSB 0
LB 1.00 Hz
GB 0
PC 1.40



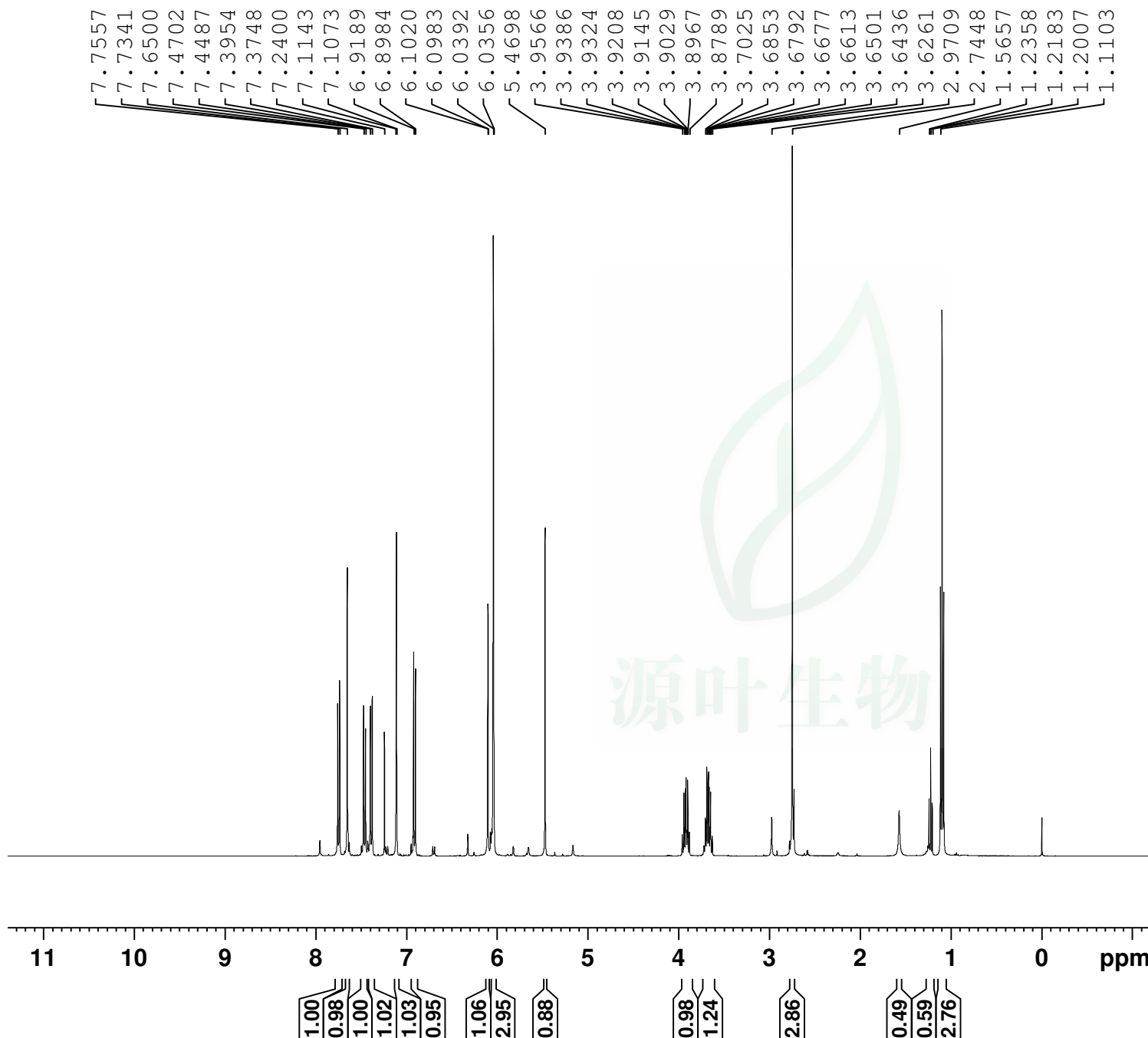


Current Data Parameters
 NAME 15060702
 EXPNO 1
 PROCNO 1

F2 - Acquisition Parameters
 Date_ 20150913
 Time 19.34
 INSTRUM spect
 PROBHD 5 mm PABBO BB-
 PULPROG zg30
 TD 65536
 SOLVENT CDC13
 NS 16
 DS 2
 SWH 8012.820 Hz
 FIDRES 0.122266 Hz
 AQ 4.0894465 sec
 RG 90.5
 DW 62.400 usec
 DE 6.50 usec
 TE 296.9 K
 D1 1.00000000 sec
 TD0 1

===== CHANNEL f1 =====
 SFO1 400.1324710 MHz
 NUC1 1H
 P1 13.12 usec
 PLW1 15.00000000 W

F2 - Processing parameters
 SI 65536
 SF 400.1300177 MHz
 WDW EM
 SSB 0
 LB 0.30 Hz
 GB 0
 PC 1.00



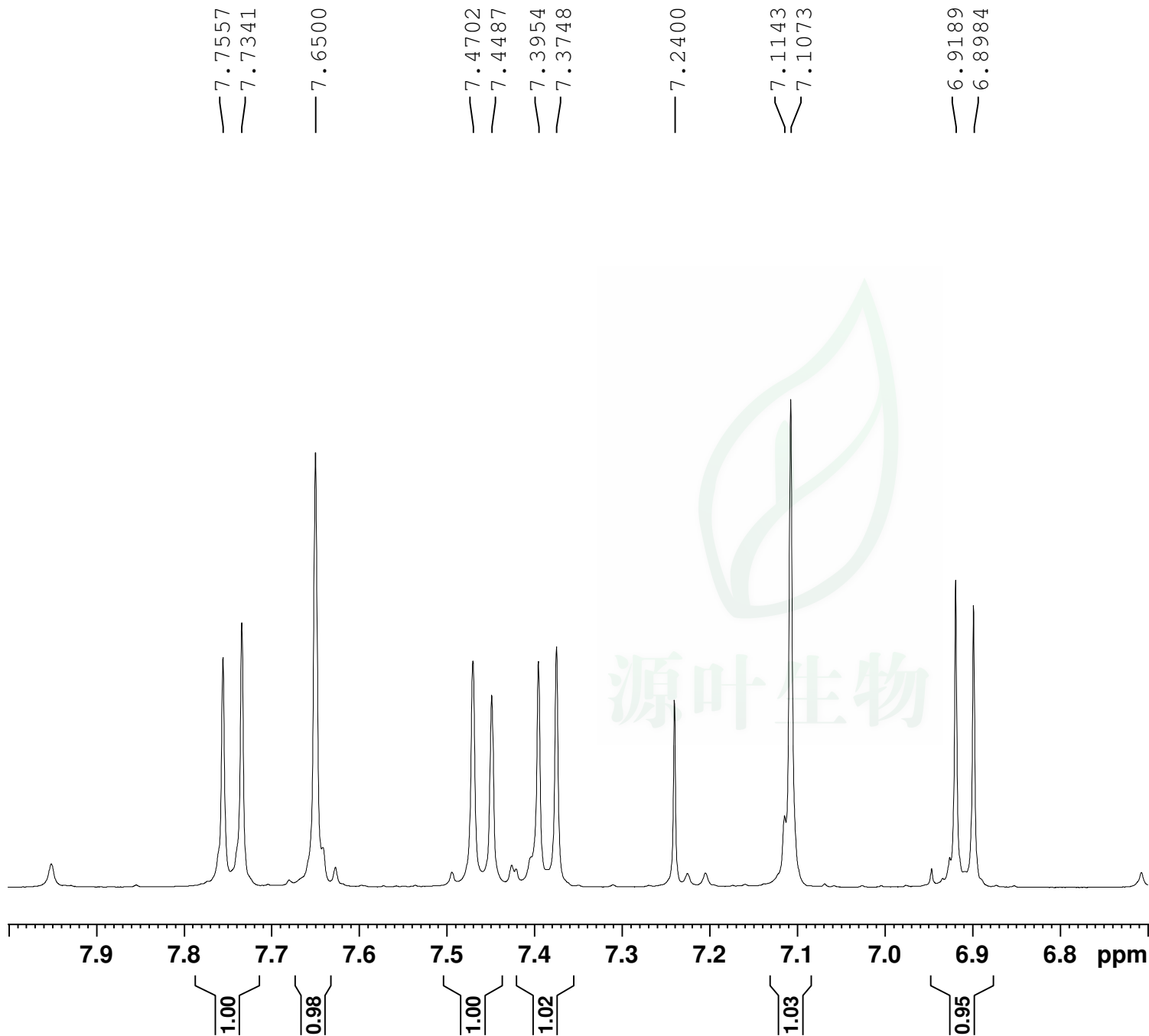


Current Data Parameters
NAME 15060702
EXPNO 1
PROCNO 1

F2 - Acquisition Parameters
Date_ 20150913
Time 19.34
INSTRUM spect
PROBHD 5 mm PABBO BB-
PULPROG zg30
TD 65536
SOLVENT CDC13
NS 16
DS 2
SWH 8012.820 Hz
FIDRES 0.122266 Hz
AQ 4.0894465 sec
RG 90.5
DW 62.400 usec
DE 6.50 usec
TE 296.9 K
D1 1.00000000 sec
TD0 1

===== CHANNEL f1 =====
SFO1 400.1324710 MHz
NUC1 1H
P1 13.12 usec
PLW1 15.00000000 W

F2 - Processing parameters
SI 65536
SF 400.1300177 MHz
WDW EM
SSB 0
LB 0.30 Hz
GB 0
PC 1.00



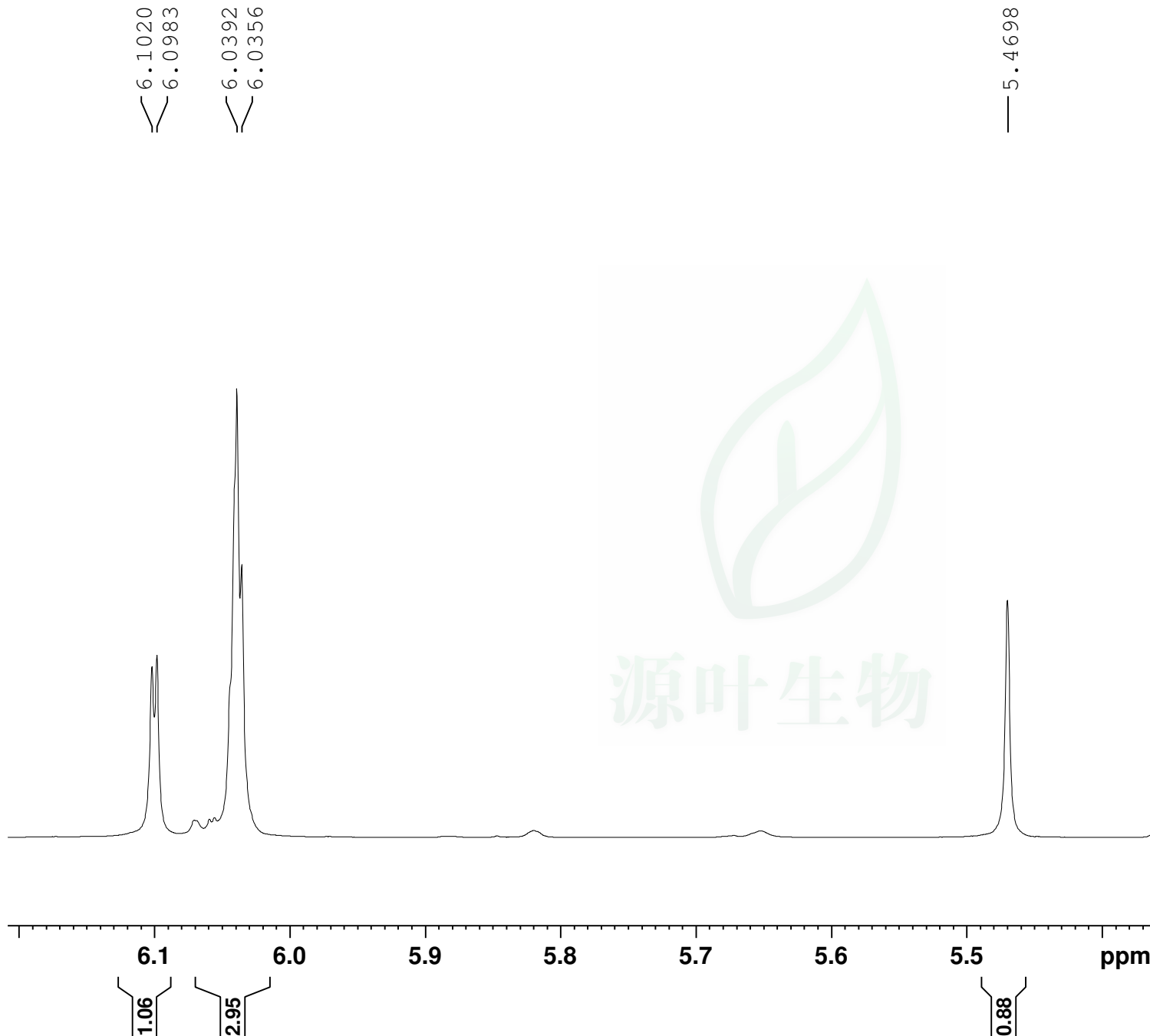


Current Data Parameters
NAME 15060702
EXPNO 1
PROCNO 1

F2 - Acquisition Parameters
Date_ 20150913
Time 19.34
INSTRUM spect
PROBHD 5 mm PABBO BB-
PULPROG zg30
TD 65536
SOLVENT CDCl3
NS 16
DS 2
SWH 8012.820 Hz
FIDRES 0.122266 Hz
AQ 4.0894465 sec
RG 90.5
DW 62.400 usec
DE 6.50 usec
TE 296.9 K
D1 1.00000000 sec
TD0 1

===== CHANNEL f1 =====
SFO1 400.1324710 MHz
NUC1 1H
P1 13.12 usec
PLW1 15.00000000 W

F2 - Processing parameters
SI 65536
SF 400.1300177 MHz
WDW EM
SSB 0
LB 0.30 Hz
GB 0
PC 1.00



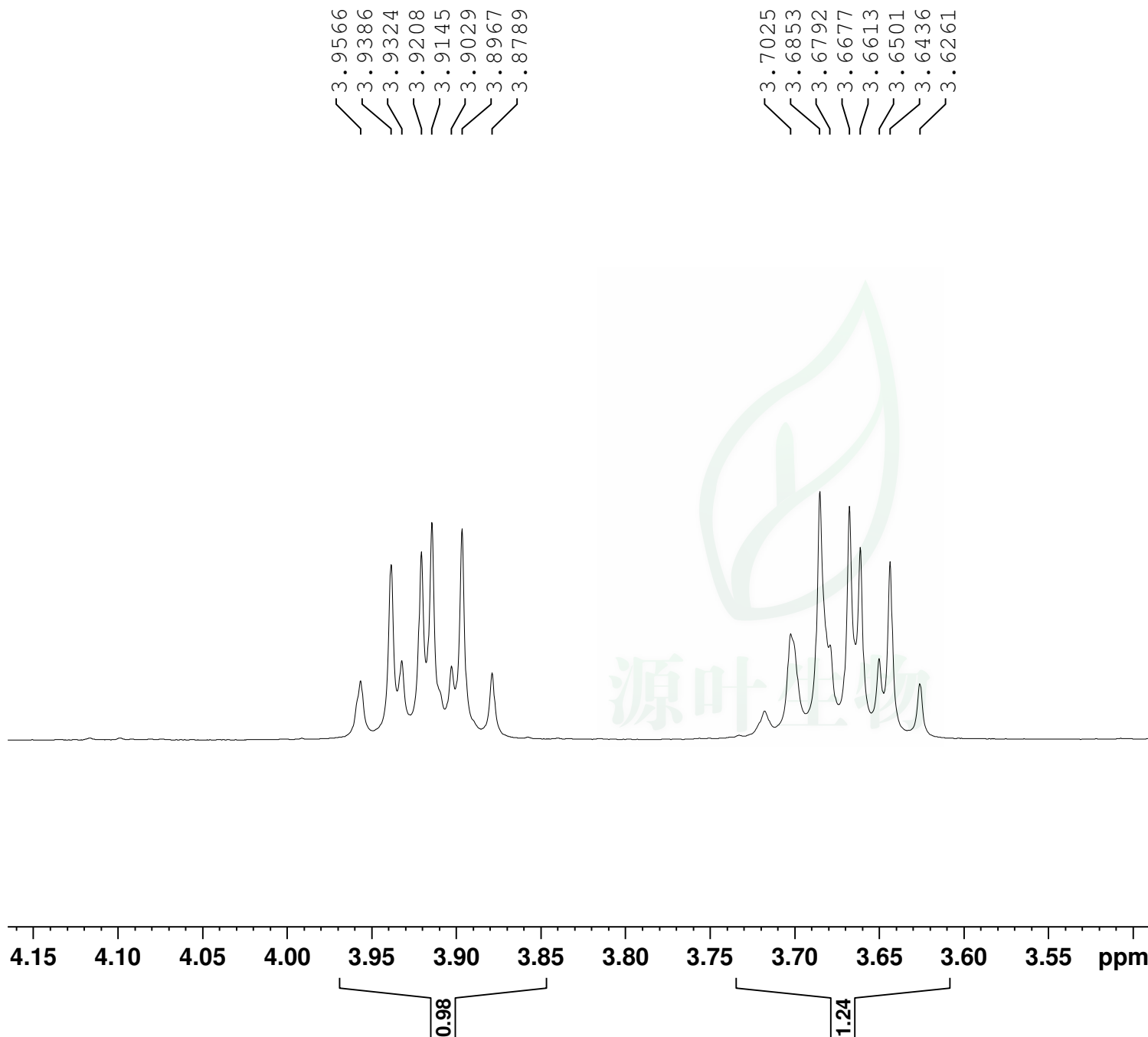


Current Data Parameters
NAME 15060702
EXPNO 1
PROCNO 1

F2 - Acquisition Parameters
Date_ 20150913
Time 19.34
INSTRUM spect
PROBHD 5 mm PABBO BB-
PULPROG zg30
TD 65536
SOLVENT CDC13
NS 16
DS 2
SWH 8012.820 Hz
FIDRES 0.122266 Hz
AQ 4.0894465 sec
RG 90.5
DW 62.400 usec
DE 6.50 usec
TE 296.9 K
D1 1.00000000 sec
TD0 1

===== CHANNEL f1 =====
SFO1 400.1324710 MHz
NUC1 1H
P1 13.12 usec
PLW1 15.00000000 W

F2 - Processing parameters
SI 65536
SF 400.1300177 MHz
WDW EM
SSB 0
LB 0.30 Hz
GB 0
PC 1.00





Current Data Parameters
NAME 15060702
EXPNO 1
PROCNO 1

F2 - Acquisition Parameters
Date_ 20150913
Time 19.34
INSTRUM spect
PROBHD 5 mm PABBO BB-
PULPROG zg30
TD 65536
SOLVENT CDC13
NS 16
DS 2
SWH 8012.820 Hz
FIDRES 0.122266 Hz
AQ 4.0894465 sec
RG 90.5
DW 62.400 usec
DE 6.50 usec
TE 296.9 K
D1 1.00000000 sec
TD0 1

===== CHANNEL f1 =====
SFO1 400.1324710 MHz
NUC1 1H
P1 13.12 usec
PLW1 15.00000000 W

F2 - Processing parameters
SI 65536
SF 400.1300177 MHz
WDW EM
SSB 0
LB 0.30 Hz
GB 0
PC 1.00

