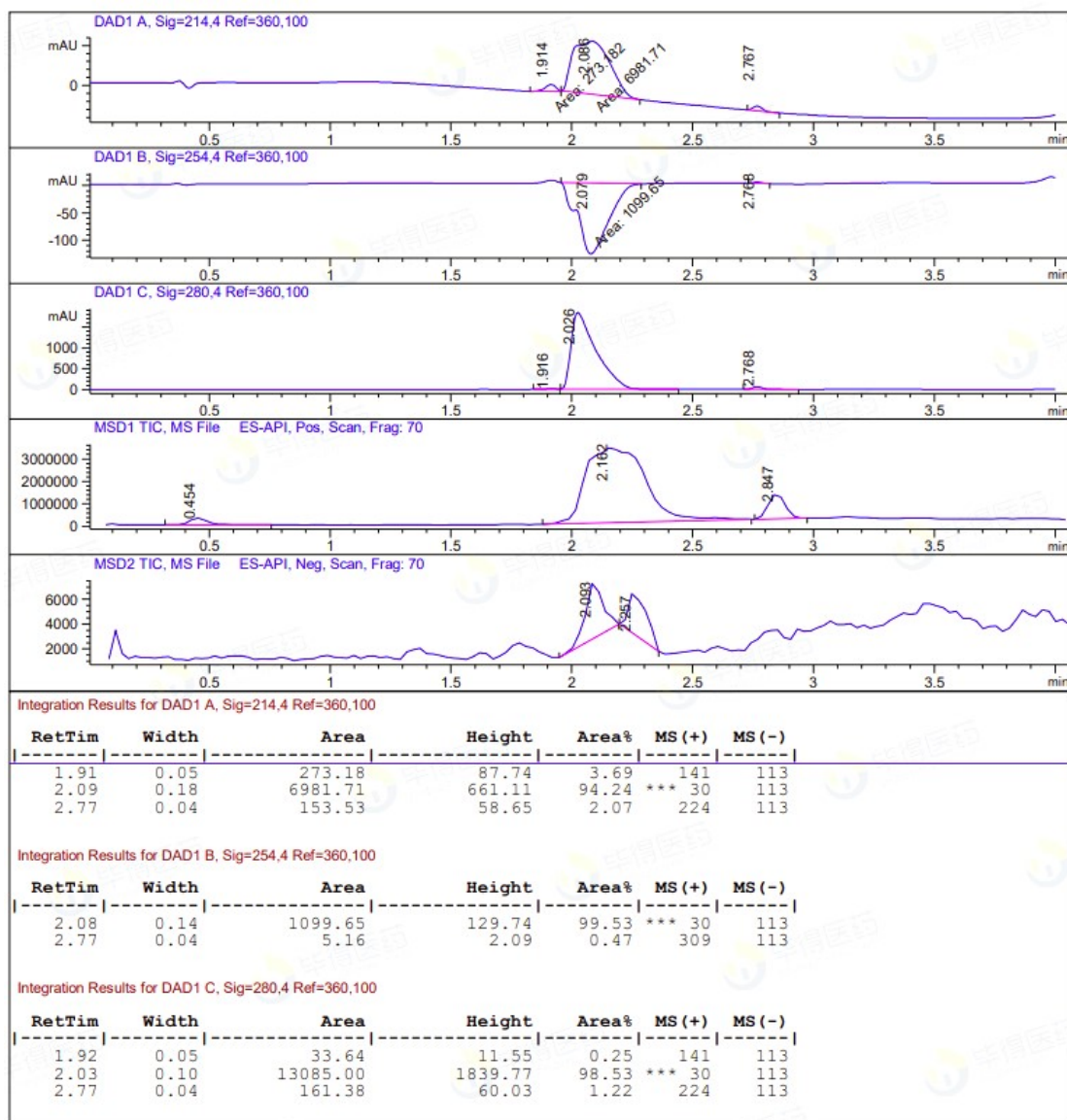




上海源叶生物科技有限公司
Shanghai yuanye Bio-Technology Co., Ltd
电话: 021-61312973 传真: 021-55068248
网址: www.shyuanye.com
邮箱: shyysw@sina.com

File ..\02 2020-02-25 08-41-27\OnlineEdited--036.D Tgt Mass (EZ):
Injection Date : 25 Feb 20 11:40 am +0800 Seq. Line : 36
Sample Name : 20200225-QC137848-247659 Location : 35
Acq. Operator : SYSTEM Inj : 1
Spec. Reported : MS Integration Inj Volume : 1 ul
Acq. Method : D:\Chem32\1\Data\MAFANGYA\02 2020-02-25 08-41-27\20171123--FA02.M
Analysis Method : D:\Chem32\1\Data\MAFANGYA\02 2020-02-25 08-41-27\20171123--FA02.M
Sample Info :
Method Info :





上海源叶生物科技有限公司
Shanghai yuanye Bio-Technology Co., Ltd
电话: 021-61312973 传真: 021-55068248
网址: www.shyuanye.com
邮箱: shyysw@sina.com

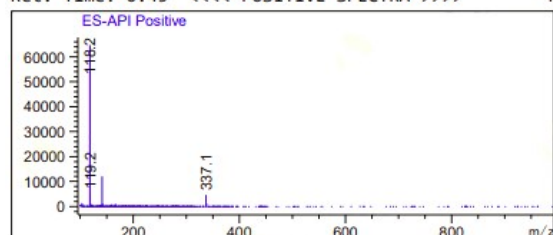
Integration Results for MSD1 TIC, MS File

RetTim	Width	Area	Height	Area%	MS (+)	MS (-)
0.45	0.09	1685164.38	314315.09	2.64	118	-
2.16	0.25	56750496.00	3326608.25	89.06	*** 30	-
2.85	0.08	5284737.00	1095098.63	8.29	224	-

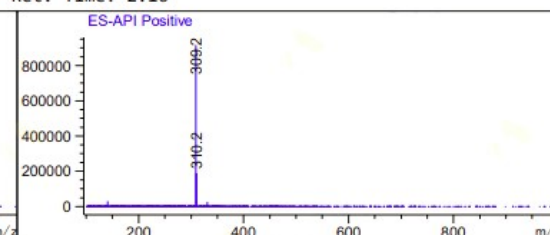
Integration Results for MSD2 TIC, MS File

RetTim	Width	Area	Height	Area%	MS (+)	MS (-)
2.09	0.08	23050.98	4530.08	56.45	-	113
2.26	0.09	17783.23	3377.66	43.55	-	113

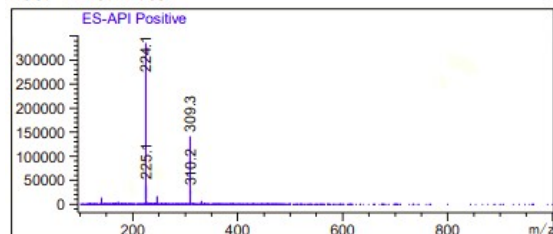
Ret. Time: 0.45 <<<< POSITIVE SPECTRA >>>>



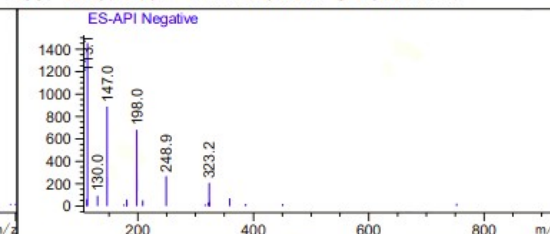
Ret. Time: 2.16



Ret. Time: 2.85



Ret. Time: 2.09 <<<< NEGATIVE SPECTRA >>>>



Ret. Time: 2.26

