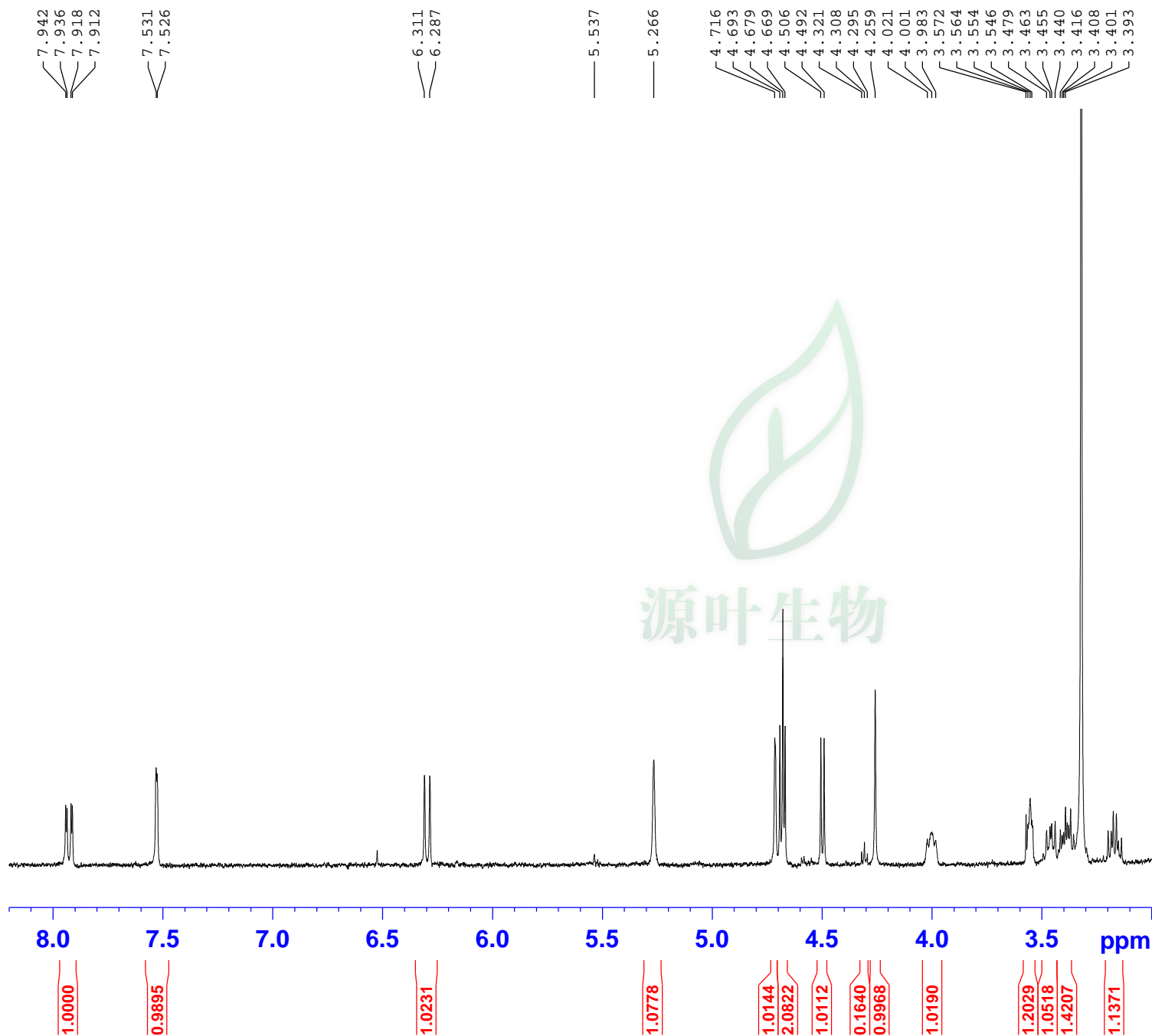


Current Data Parameters  
NAME JT-AKTIN-PROSCILLARIDIN-A-H1-DMSO-20170612  
EXPNO 10  
PROCNO 1

F2 - Acquisition Parameters  
Date\_ 20170612  
Time 16.45  
INSTRUM spect  
PROBHD 5 mm PABBO BB/  
PULPROG zg30  
TD 65536  
SOLVENT DMSO  
NS 16  
DS 2  
SWH 8223.685 Hz  
FIDRES 0.125483 Hz  
AQ 3.9846387 sec  
RG 197.41  
DW 60.800 usec  
DE 8.00 usec  
TE 297.7 K  
D1 1.00000000 sec  
TD0 1

===== CHANNEL f1 =====  
NUC1 1H  
P1 12.80 usec  
PLW1 15.84899998 W  
SF01 400.1632013 MHz

F2 - Processing parameters  
SI 65536  
SF 400.1600029 MHz  
WDW EM  
SSB 0  
LB 0.30 Hz  
GB 0  
PC 1.00

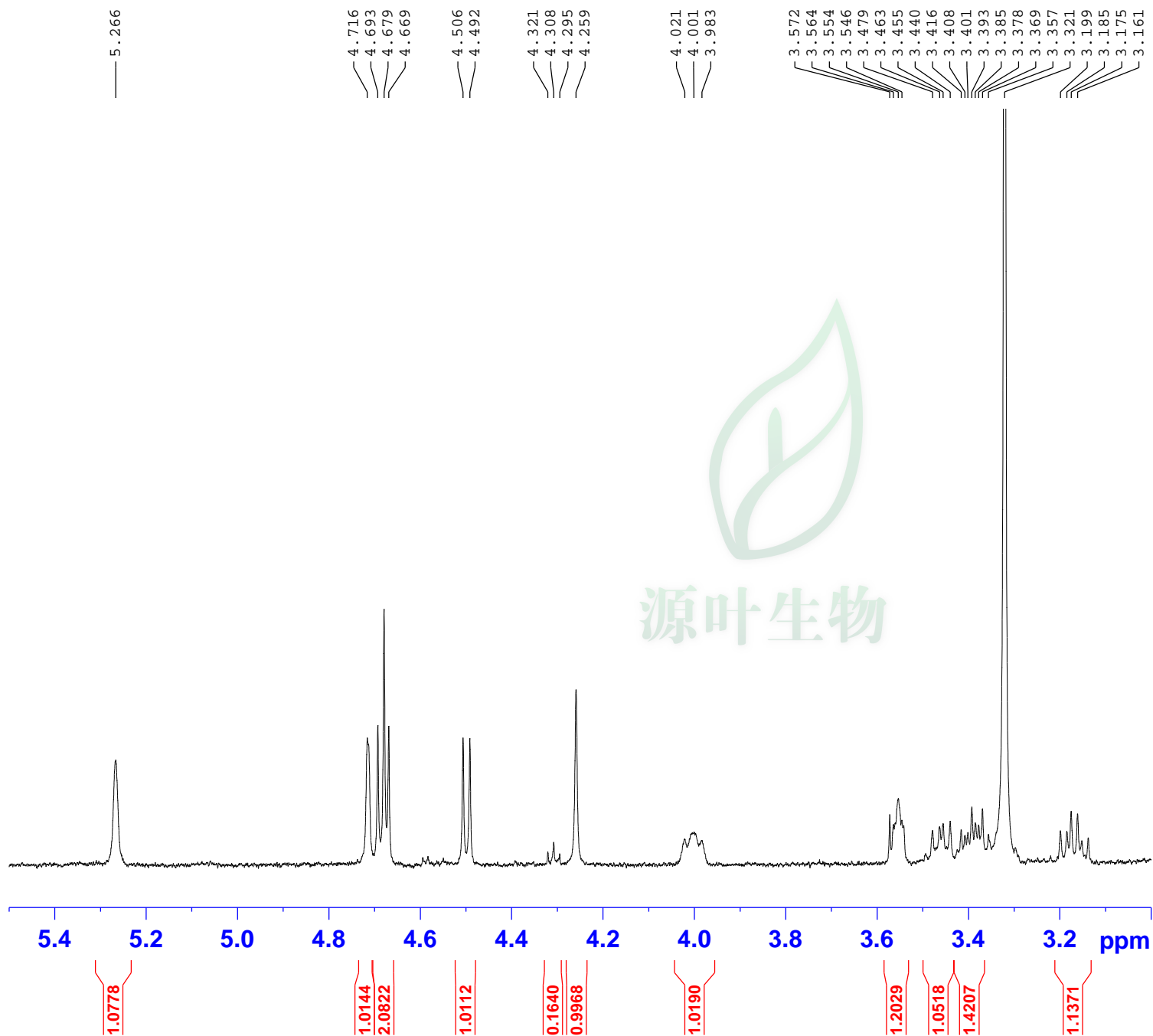


Current Data Parameters  
NAME JT-AKTIN-PROSCILLARIDIN-A-H1-DMSO-20170612  
EXPNO 10  
PROCNO 1

F2 - Acquisition Parameters  
Date\_ 20170612  
Time 16.45  
INSTRUM spect  
PROBHD 5 mm PABBO BB/  
PULPROG zg30  
TD 65536  
SOLVENT DMSO  
NS 16  
DS 2  
SWH 8223.685 Hz  
FIDRES 0.125483 Hz  
AQ 3.9846387 sec  
RG 197.41  
DW 60.800 usec  
DE 8.00 usec  
TE 297.7 K  
D1 1.00000000 sec  
TD0 1

===== CHANNEL f1 =====  
NUC1 1H  
P1 12.80 usec  
PLW1 15.84899998 W  
SF01 400.1632013 MHz

F2 - Processing parameters  
SI 65536  
SF 400.1600029 MHz  
WDW EM  
SSB 0  
LB 0.30 Hz  
GB 0  
PC 1.00

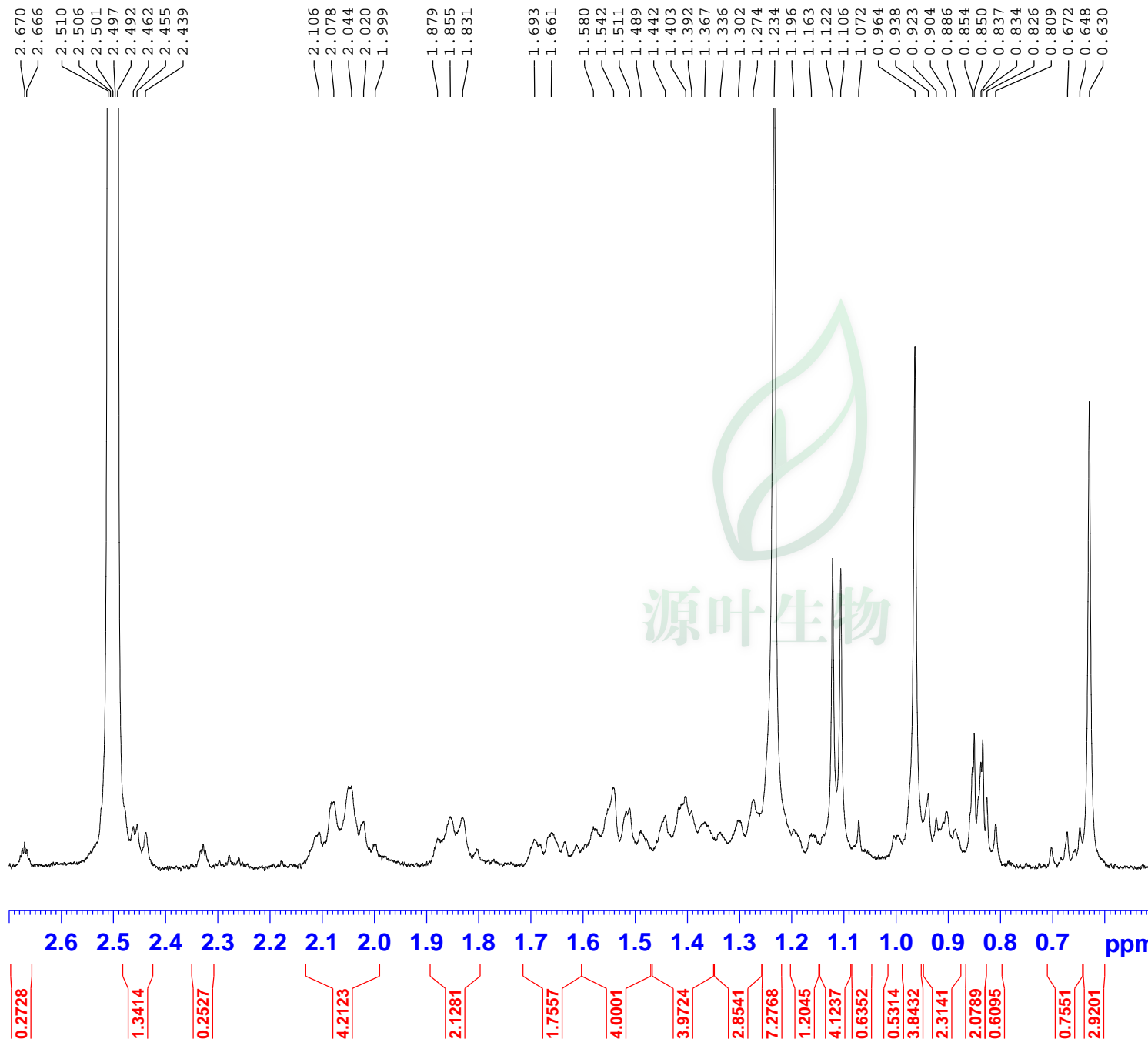


Current Data Parameters  
NAME JT-AKTIN-PROSCILLARIDIN-A-H1-DMSO-20170612  
EXPNO 10  
PROCNO 1

F2 - Acquisition Parameters  
Date\_ 20170612  
Time 16.45  
INSTRUM spect  
PROBHD 5 mm PABBO BB/  
PULPROG zg30  
TD 65536  
SOLVENT DMSO  
NS 16  
DS 2  
SWH 8223.685 Hz  
FIDRES 0.125483 Hz  
AQ 3.9846387 sec  
RG 197.41  
DW 60.800 usec  
DE 8.00 usec  
TE 297.7 K  
D1 1.00000000 sec  
TD0 1

===== CHANNEL f1 =====  
NUC1 1H  
P1 12.80 usec  
PLW1 15.84899998 W  
SF01 400.1632013 MHz

F2 - Processing parameters  
SI 65536  
SF 400.1600029 MHz  
WDW EM  
SSB 0  
LB 0.30 Hz  
GB 0  
PC 1.00



Current Data Parameters  
NAME JT-AKTIN-PROSCILLARIDIN-A-H1-DMSO-20170612  
EXPNO 10  
PROCNO 1

F2 - Acquisition Parameters  
Date\_ 20170612  
Time 16.45  
INSTRUM spect  
PROBHD 5 mm PABBO BB/  
PULPROG zg30  
TD 65536  
SOLVENT DMSO  
NS 16  
DS 2  
SWH 8223.685 Hz  
FIDRES 0.125483 Hz  
AQ 3.9846387 sec  
RG 197.41  
DW 60.800 usec  
DE 8.00 usec  
TE 297.7 K  
D1 1.00000000 sec  
TD0 1

===== CHANNEL f1 =====  
NUC1 1H  
P1 12.80 usec  
PLW1 15.84899998 W  
SF01 400.1632013 MHz

F2 - Processing parameters  
SI 65536  
SF 400.1600029 MHz  
WDW EM  
SSB 0  
LB 0.30 Hz  
GB 0  
PC 1.00