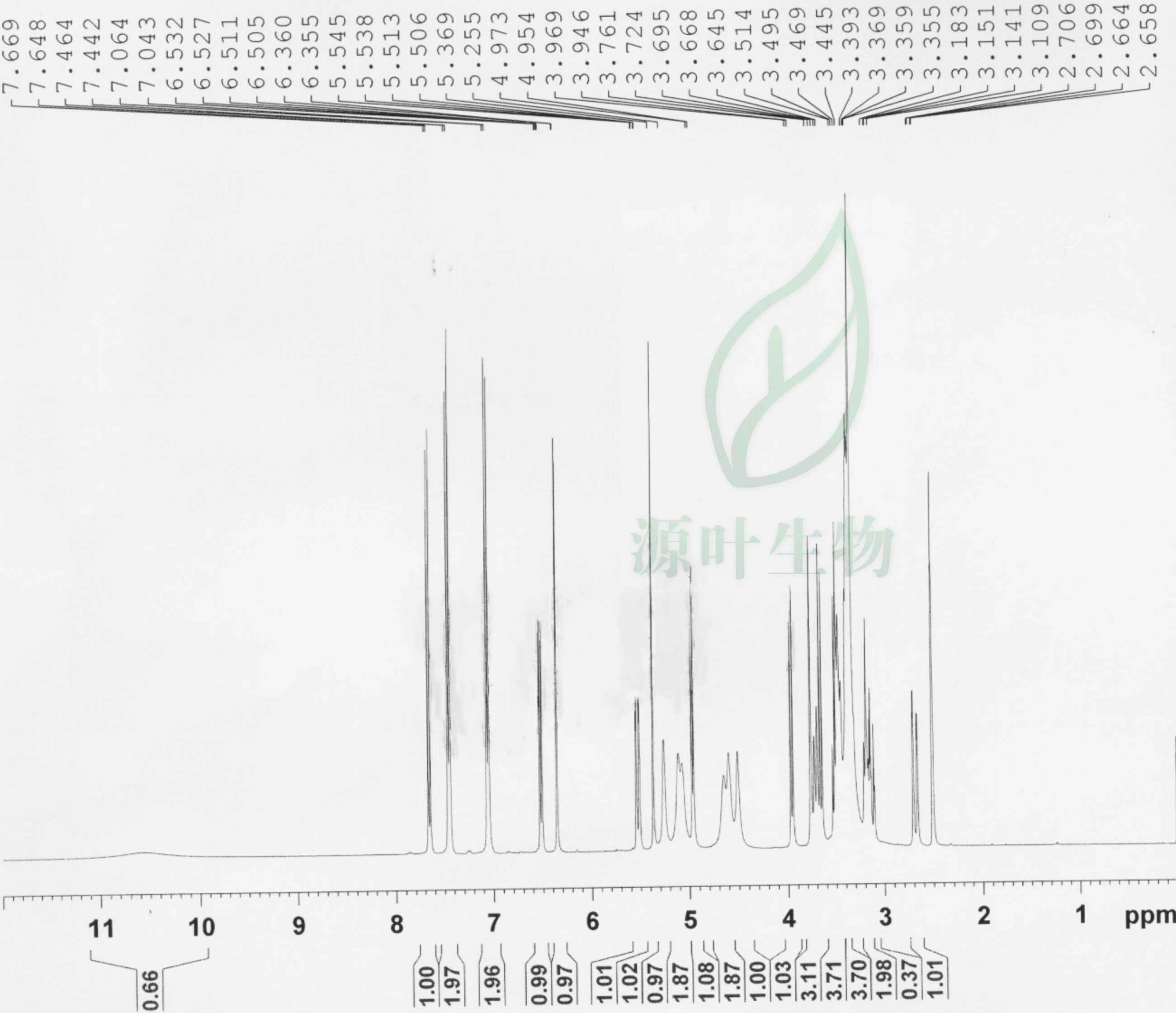


101661 芹糖苷草苣



Current Data Parameters
NAME 101661
EXPNO 14
PROCNO 1

F2 - Acquisition Parameters
Date_ 20170601
Time_ 12.17
INSTRUM spect
PROBHD 5 mm PABBO BB-
PULPROG zg30
TD 65536
SOLVENT DMSO
NS 32
DS 2
SWH 8223.685 Hz
FIDRES 0.125483 Hz
AQ 3.9846387 sec
RG 95.23
DW 60.800 usec
DE 6.50 usec
TE 300.2 K
D1 1.00000000 sec

===== CHANNEL f1 =====
NUC1 1H
P1 12.00 usec
PLW1 22.00000000 W
SFO1 400.1324710 MHz

F2 - Processing parameters
SI 65536
SF 400.1300000 MHz
WDW EM
SSB 0
LB 0.30 Hz
GB 0
PC 1.00