

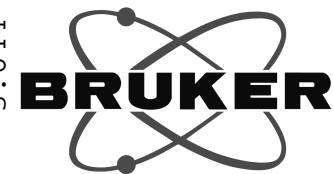
Current Data Parameters
NAME 9091102-1H NMR C5D5N
EXPNO 2
PROCNO 1

F2 - Acquisition Parameters
Date_ 20180917
Time 8.03
INSTRUM spect
PROBHD 5 mm PABBO BB/
PULPROG zg30
TD 65536
SOLVENT Pyr
NS 8
DS 2
SWH 8012.820 Hz
FIDRES 0.122266 Hz
AQ 4.0894465 sec
RG 124.64
DW 62.400 usec
DE 6.50 usec
TE 301.1 K
D1 1.00000000 sec
TD0 1

===== CHANNEL f1 =====
SFO1 400.1324710 MHz
NUC1 1H
P1 15.36 usec
PLW1 11.50800037 W

F2 - Processing parameters
SI 65536
SF 400.1299919 MHz
WDW EM
SSB 0
LB 0.30 Hz
GB 0
PC 1.00
SINO 0

5.664
5.642
5.637
5.618
5.482
5.471
5.415
5.398
5.378
5.361
5.293
5.284
5.275
5.262
5.202
5.183
5.084
5.064
4.841
4.822
4.716
4.641
4.577
4.552
4.528
4.470
4.462
4.360
4.332
4.319
4.312
4.279
4.263
4.250
4.231
4.189
4.166
4.117
4.098
4.090
3.942
3.904
3.763
3.644



Current Data Parameters
NAME 9091102-1H NMR C5D5N
EXPNO 2
PROCNO 1

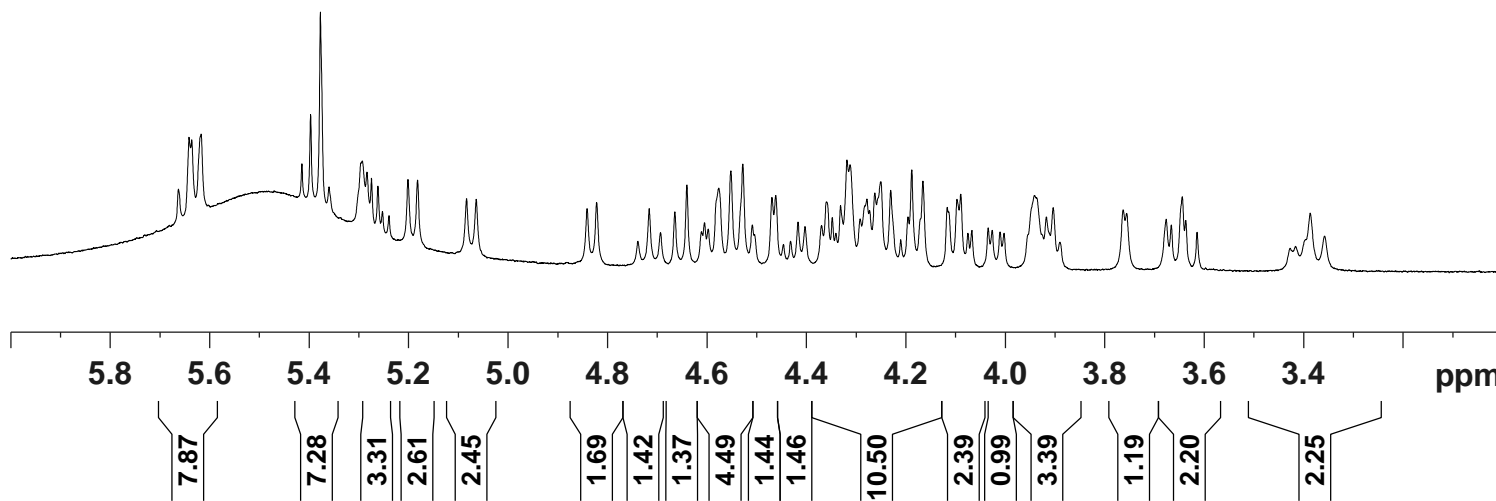
F2 - Acquisition Parameters
Date_ 20180917
Time 8.03
INSTRUM spect
PROBHD 5 mm PABBO BB/
PULPROG zg30
TD 65536
SOLVENT Pyr
NS 8
DS 2
SWH 8012.820 Hz
FIDRES 0.122266 Hz
AQ 4.0894465 sec
RG 124.64
DW 62.400 usec
DE 6.50 usec
TE 301.1 K
D1 1.00000000 sec
TD0 1

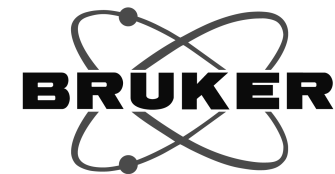
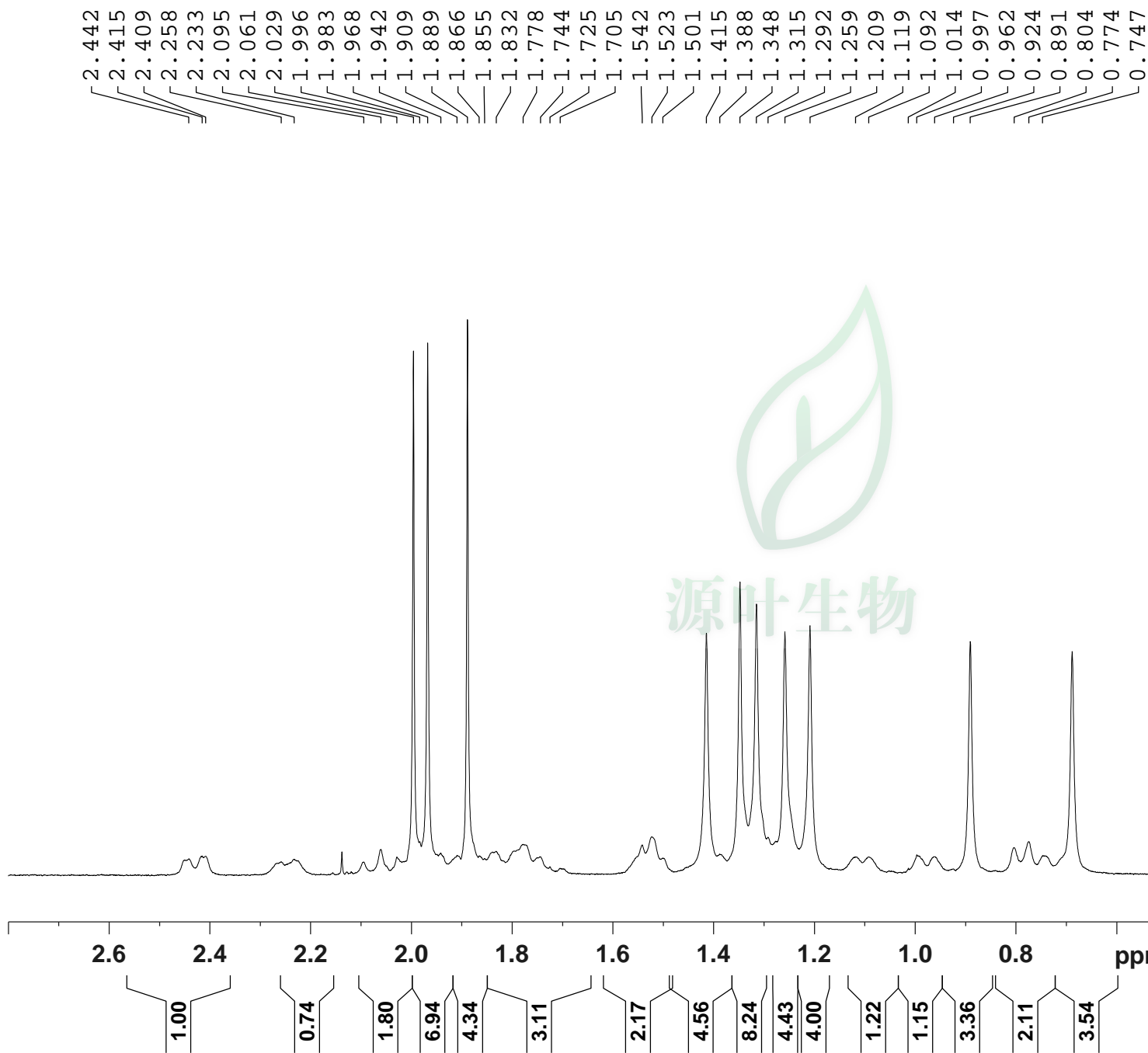
===== CHANNEL f1 =====
SFO1 400.1324710 MHz
NUC1 1H
P1 15.36 usec
PLW1 11.50800037 W

F2 - Processing parameters
SI 65536
SF 400.1299919 MHz
WDW EM
SSB 0
LB 0.30 Hz
GB 0
PC 1.00
SINO 0



源叶生物





Current Data Parameters
NAME 9091102-1H NMR C5D5N
EXPNO 2
PROCNO 1

F2 - Acquisition Parameters
Date_ 20180917
Time 8.03
INSTRUM spect
PROBHD 5 mm PABBO BB/
PULPROG zg30
TD 65536
SOLVENT Pyr
NS 8
DS 2
SWH 8012.820 Hz
FIDRES 0.122266 Hz
AQ 4.0894465 sec
RG 124.64
DW 62.400 usec
DE 6.50 usec
TE 301.1 K
D1 1.00000000 sec
TD0 1

===== CHANNEL f1 =====
SFO1 400.1324710 MHz
NUC1 1H
P1 15.36 usec
PLW1 11.50800037 W

F2 - Processing parameters
SI 65536
SF 400.1299919 MHz
WDW EM
SSB 0
LB 0.30 Hz
GB 0
PC 1.00
SINO 0