

Current Data Parameters
 NAME JT-AKTIN-CORYNOXINE-B-H1-CDCl3-20170418
 EXPNO 20
 PROCNO 1

F2 - Acquisition Parameters
 Date_ 20170418
 Time 20.11
 INSTRUM spect
 PROBHD 5 mm PABBO BB/
 PULPROG zg30
 TD 65536
 SOLVENT CDCl3
 NS 16
 DS 2
 SWH 8223.685 Hz
 FIDRES 0.125483 Hz
 AQ 3.9846387 sec
 RG 197.41
 DW 60.800 usec
 DE 8.00 usec
 TE 297.7 K
 D1 1.00000000 sec
 TD0 1

===== CHANNEL f1 =====
 NUC1 1H
 P1 12.80 usec
 PLW1 15.84899998 W
 SF01 400.1632013 MHz

F2 - Processing parameters
 SI 65536
 SF 400.1600075 MHz
 WDW EM
 SSB 0
 LB 0.30 Hz
 GB 0
 PC 1.00

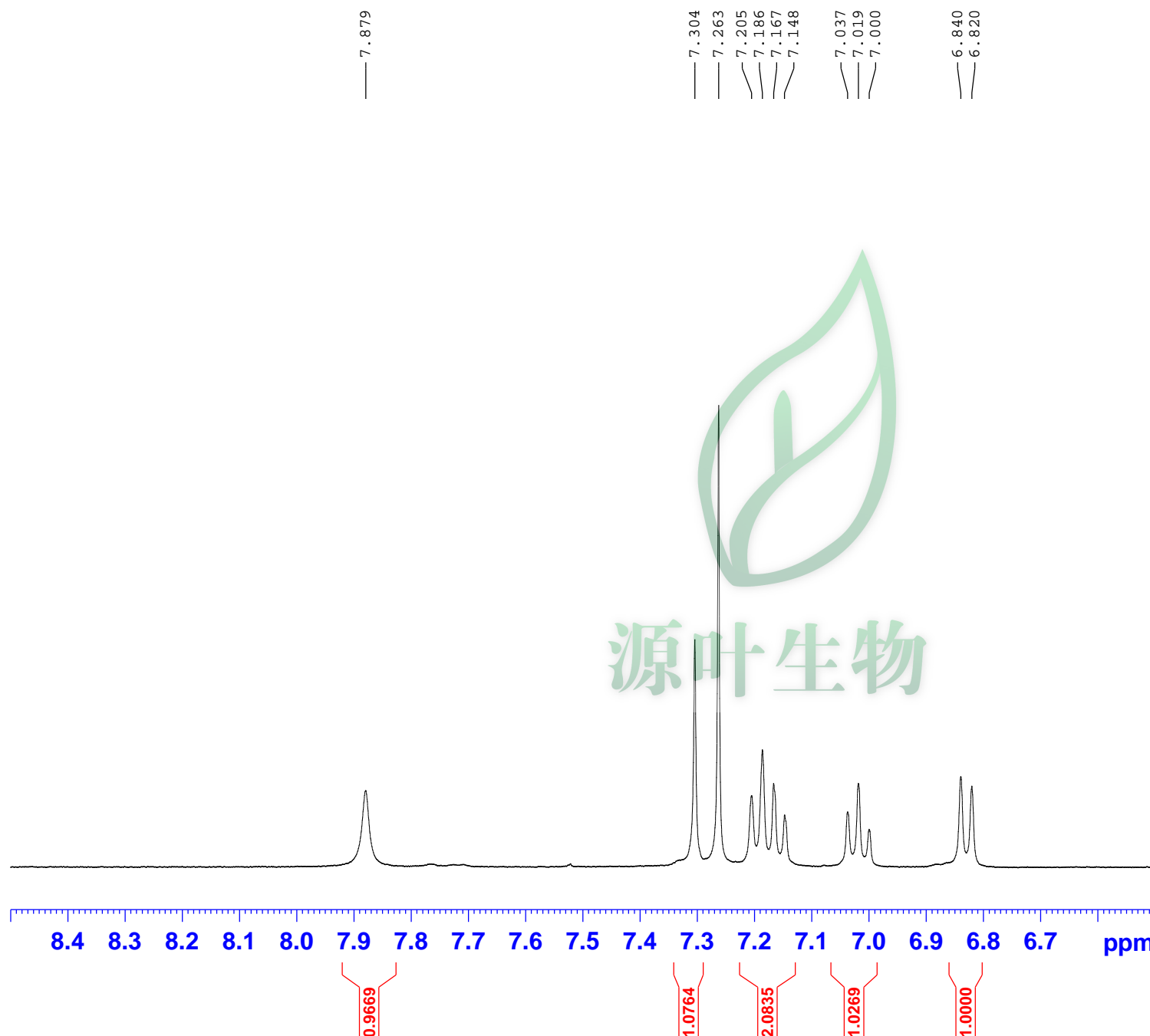


Current Data Parameters
NAME JT-AKTIN-CORYNOXINE-B-H1-CDC13-20170418
EXPNO 20
PROCNO 1

F2 - Acquisition Parameters
Date_ 20170418
Time 20.11
INSTRUM spect
PROBHD 5 mm PABBO BB/
PULPROG zg30
TD 65536
SOLVENT CDC13
NS 16
DS 2
SWH 8223.685 Hz
FIDRES 0.125483 Hz
AQ 3.9846387 sec
RG 197.41
DW 60.800 usec
DE 8.00 usec
TE 297.7 K
D1 1.00000000 sec
TD0 1

===== CHANNEL f1 =====
NUC1 1H
P1 12.80 usec
PLW1 15.84899998 W
SFO1 400.1632013 MHz

F2 - Processing parameters
SI 65536
SF 400.1600075 MHz
WDW EM
SSB 0
LB 0.30 Hz
GB 0
PC 1.00





Current Data Parameters
NAME JT-AKTIN-CORYNOXINE-B-H1-CDCl3-20170418
EXPNO 20
PROCNO 1

F2 - Acquisition Parameters
Date_ 20170418
Time 20.11
INSTRUM spect
PROBHD 5 mm PABBO BB/
PULPROG zg30
TD 65536
SOLVENT CDCl3
NS 16
DS 2
SWH 8223.685 Hz
FIDRES 0.125483 Hz
AQ 3.9846387 sec
RG 197.41
DW 60.800 usec
DE 8.00 usec
TE 297.7 K
D1 1.00000000 sec
TD0 1

===== CHANNEL f1 =====
NUC1 1H
P1 12.80 usec
PLW1 15.84899998 W
SFO1 400.1632013 MHz

F2 - Processing parameters
SI 65536
SF 400.1600075 MHz
WDW EM
SSB 0
LB 0.30 Hz
GB 0
PC 1.00

