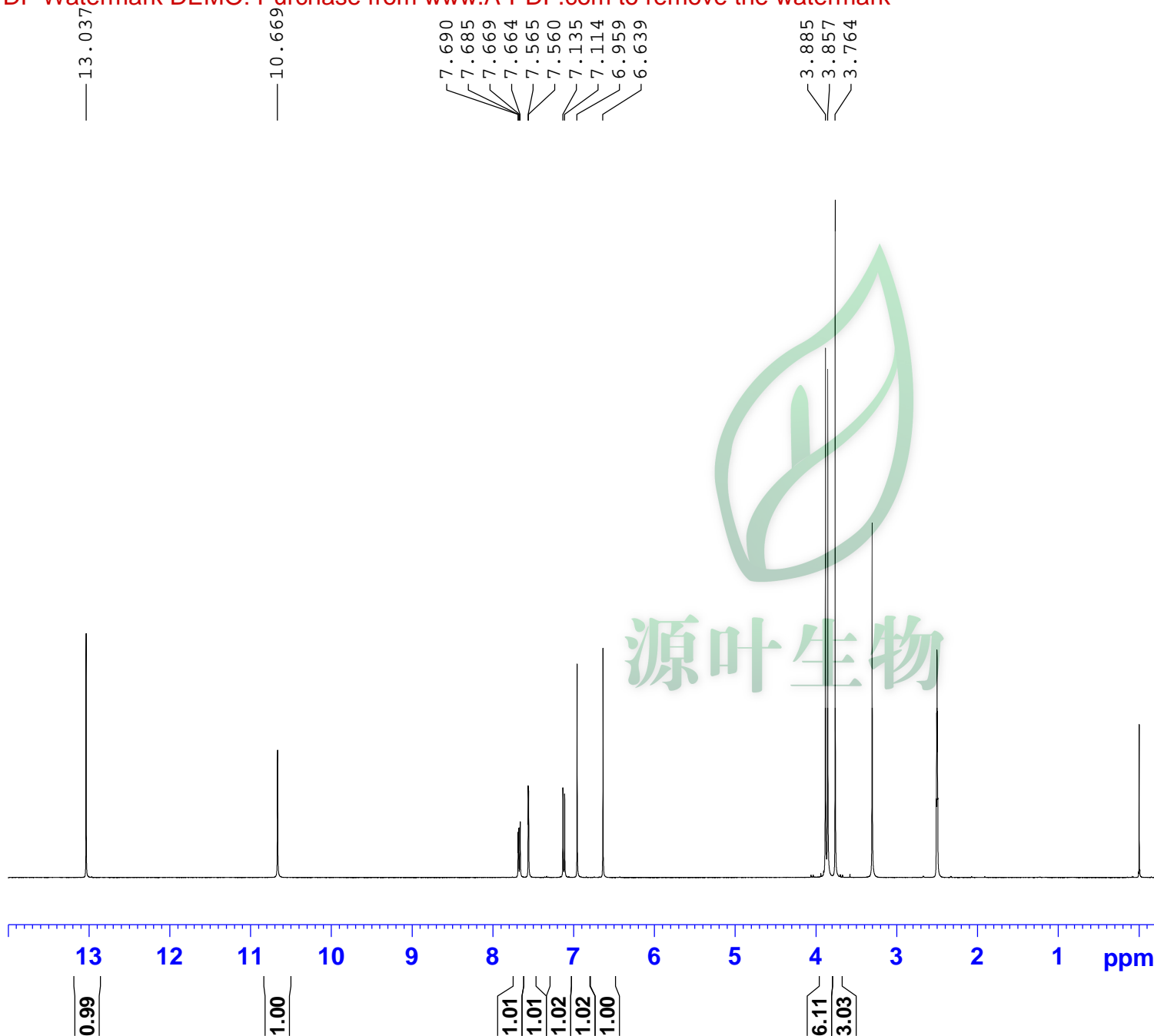


Current Data Parameters
 NAME Eupatilin-1H NMR DMSO
 EXPNO 1
 PROCNO 1

F2 - Acquisition Parameters
 Date_ 20170608
 Time 11.17
 INSTRUM spect
 PROBHD 5 mm PABBO BB/
 PULPROG zg30
 TD 65536
 SOLVENT DMSO
 NS 16
 DS 2
 SWH 8012.820 Hz
 FIDRES 0.122266 Hz
 AQ 4.0894465 sec
 RG 202.5
 DW 62.400 usec
 DE 6.50 usec
 TE 301.2 K
 D1 1.00000000 sec
 TD0 1

===== CHANNEL f1 =====
 SFO1 400.1324710 MHz
 NUC1 1H
 P1 14.79 usec
 PLW1 11.50800037 W

F2 - Processing parameters
 SI 65536
 SF 400.1300019 MHz
 WDW EM
 SSB 0
 LB 0.30 Hz
 GB 0
 PC 1.00
 SR 1.89 Hz



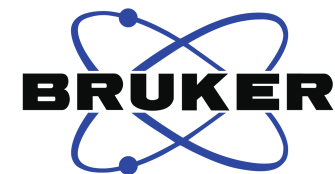
7.690
7.685
7.669
7.664

7.565
7.560

7.135
7.114

6.959

6.639

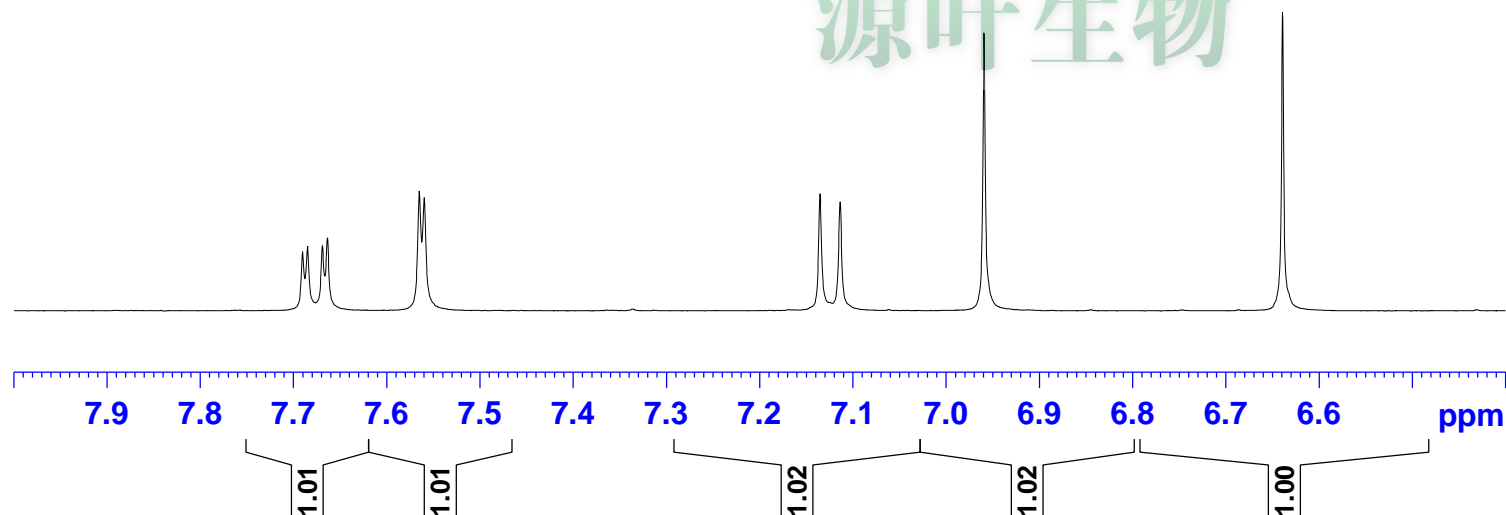


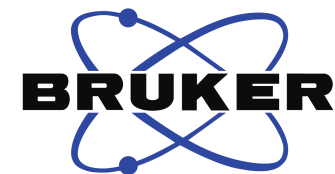
Current Data Parameters
NAME Eupatilin-1H NMR DMSO
EXPNO 1
PROCNO 1

F2 - Acquisition Parameters
Date_ 20170608
Time 11.17
INSTRUM spect
PROBHD 5 mm PABBO BB/
PULPROG zg30
TD 65536
SOLVENT DMSO
NS 16
DS 2
SWH 8012.820 Hz
FIDRES 0.122266 Hz
AQ 4.0894465 sec
RG 202.5
DW 62.400 usec
DE 6.50 usec
TE 301.2 K
D1 1.00000000 sec
TD0 1

===== CHANNEL f1 =====
SF01 400.1324710 MHz
NUC1 1H
P1 14.79 usec
PLW1 11.50800037 W

F2 - Processing parameters
SI 65536
SF 400.1300019 MHz
WDW EM
SSB 0
LB 0.30 Hz
GB 0
PC 1.00
SR 1.89 Hz





Current Data Parameters
NAME Eupatilin-1H NMR DMSO
EXPNO 1
PROCNO 1

F2 - Acquisition Parameters
Date_ 20170608
Time 11.17
INSTRUM spect
PROBHD 5 mm PABBO BB/
PULPROG zg30
TD 65536
SOLVENT DMSO
NS 16
DS 2
SWH 8012.820 Hz
FIDRES 0.122266 Hz
AQ 4.0894465 sec
RG 202.5
DW 62.400 usec
DE 6.50 usec
TE 301.2 K
D1 1.00000000 sec
TD0 1

===== CHANNEL f1 =====
SFO1 400.1324710 MHz
NUC1 1H
P1 14.79 usec
PLW1 11.50800037 W

F2 - Processing parameters
SI 65536
SF 400.1300019 MHz
WDW EM
SSB 0
LB 0.30 Hz
GB 0
PC 1.00
SR 1.89 Hz

