

219548

10.0  
ppm (t1)

5.0

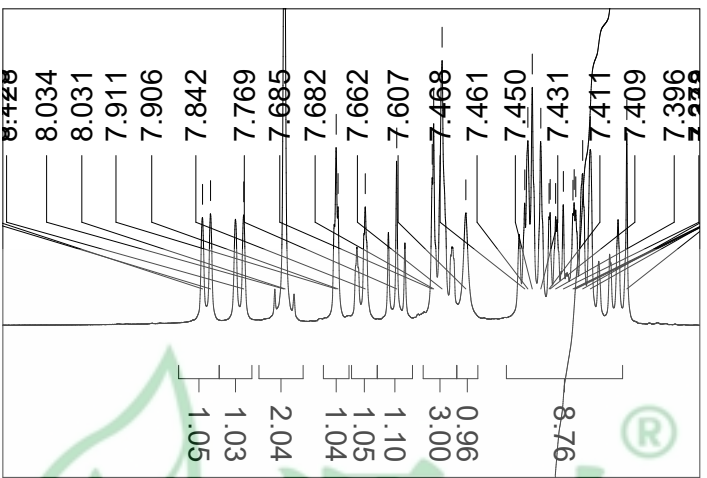
0.0

8.2258  
8.206  
8.128  
8.034  
8.031  
7.911  
7.906  
7.842  
7.769  
7.685  
7.682  
7.662  
7.607  
7.468  
7.461  
7.450  
7.431  
7.411  
7.409  
7.396  
7.378  
7.355  
7.352  
7.348  
7.332  
7.314  
7.228

1.519

0.000

93.1  
14.0  
20.1  
20.1  
20.6  
93.8



3000  
2000  
1000  
0  
-1000

10000  
50000  
0