

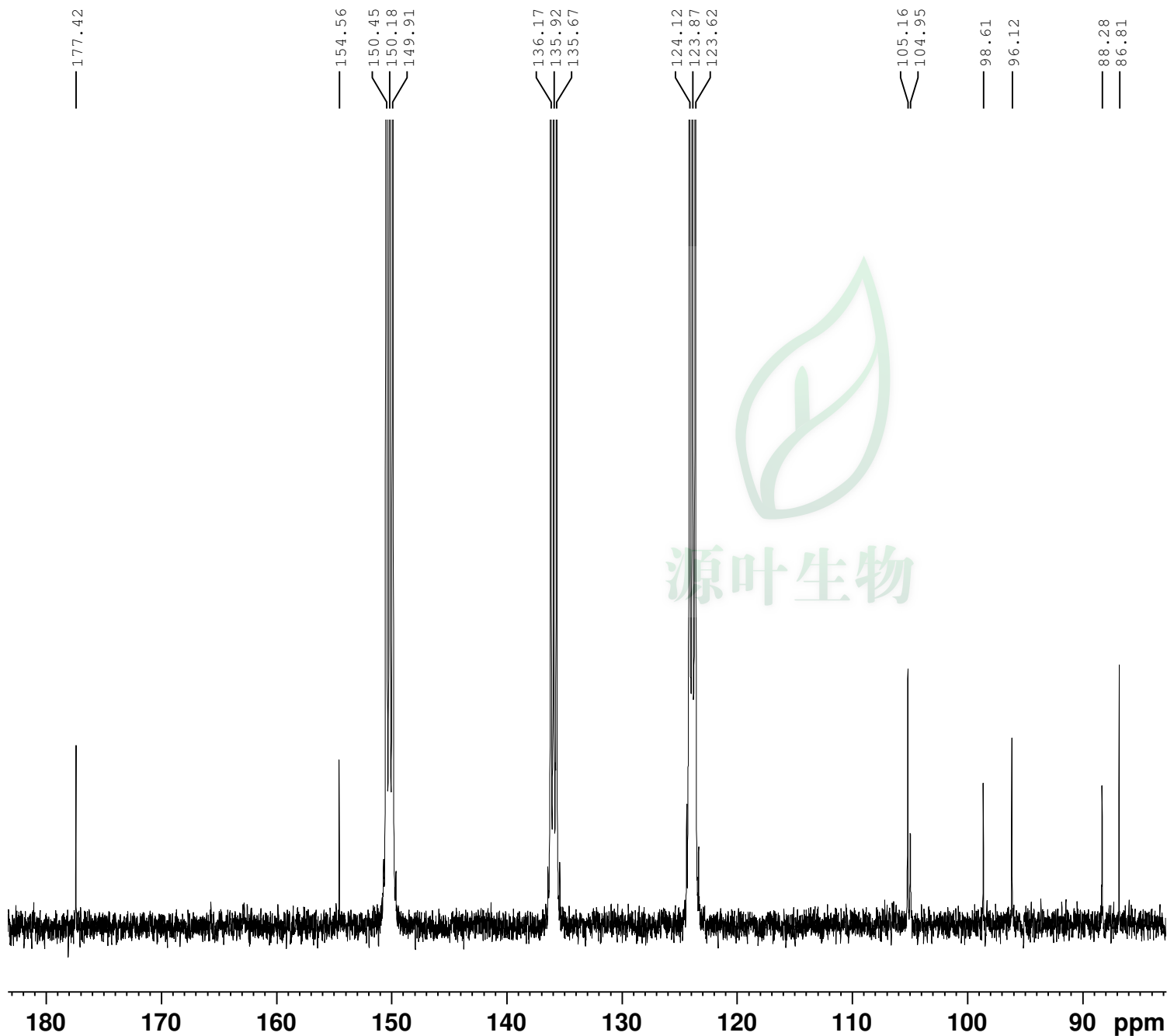
Current Data Parameters  
NAME 7052403  
EXPNO 3  
PROCNO 1

F2 - Acquisition Parameters  
Date\_ 20160530  
Time 21.16  
INSTRUM spect  
PROBHD 5 mm PABBO BB-  
PULPROG zgpg30  
TD 65536  
SOLVENT Pyr  
NS 909  
DS 4  
SWH 24038.461 Hz  
FIDRES 0.366798 Hz  
AQ 1.3631488 sec  
RG 203  
DW 20.800 usec  
DE 6.50 usec  
TE 300.0 K  
D1 2.00000000 sec  
D11 0.03000000 sec  
TD0 1

===== CHANNEL f1 =====  
SFO1 100.6228293 MHz  
NUC1 13C  
P1 9.71 usec  
PLW1 60.00000000 W

===== CHANNEL f2 =====  
SFO2 400.1316005 MHz  
NUC2 1H  
CPDPRG[2] waltz16  
PCPD2 90.00 usec  
PLW2 15.00000000 W  
PLW12 0.34101000 W  
PLW13 0.27621999 W

F2 - Processing parameters  
SI 32768  
SF 100.6128640 MHz  
WDW EM  
SSB 0  
LB 1.00 Hz  
GB 0  
PC 1.40



Current Data Parameters  
 NAME 7052403  
 EXPNO 3  
 PROCNO 1

F2 - Acquisition Parameters  
 Date\_ 20160530  
 Time 21.16  
 INSTRUM spect  
 PROBHD 5 mm PABBO BB-  
 PULPROG zgpg30  
 TD 65536  
 SOLVENT Pyr  
 NS 909  
 DS 4  
 SWH 24038.461 Hz  
 FIDRES 0.366798 Hz  
 AQ 1.3631488 sec  
 RG 203  
 DW 20.800 usec  
 DE 6.50 usec  
 TE 300.0 K  
 D1 2.00000000 sec  
 D11 0.03000000 sec  
 TD0 1

===== CHANNEL f1 =====  
 SFO1 100.6228293 MHz  
 NUC1 13C  
 P1 9.71 usec  
 PLW1 60.00000000 W

===== CHANNEL f2 =====  
 SFO2 400.1316005 MHz  
 NUC2 1H  
 CPDPRG[2] waltz16  
 PCPD2 90.00 usec  
 PLW2 15.00000000 W  
 PLW12 0.34101000 W  
 PLW13 0.27621999 W

F2 - Processing parameters  
 SI 32768  
 SF 100.6128640 MHz  
 WDW EM  
 SSB 0  
 LB 1.00 Hz  
 GB 0  
 PC 1.40



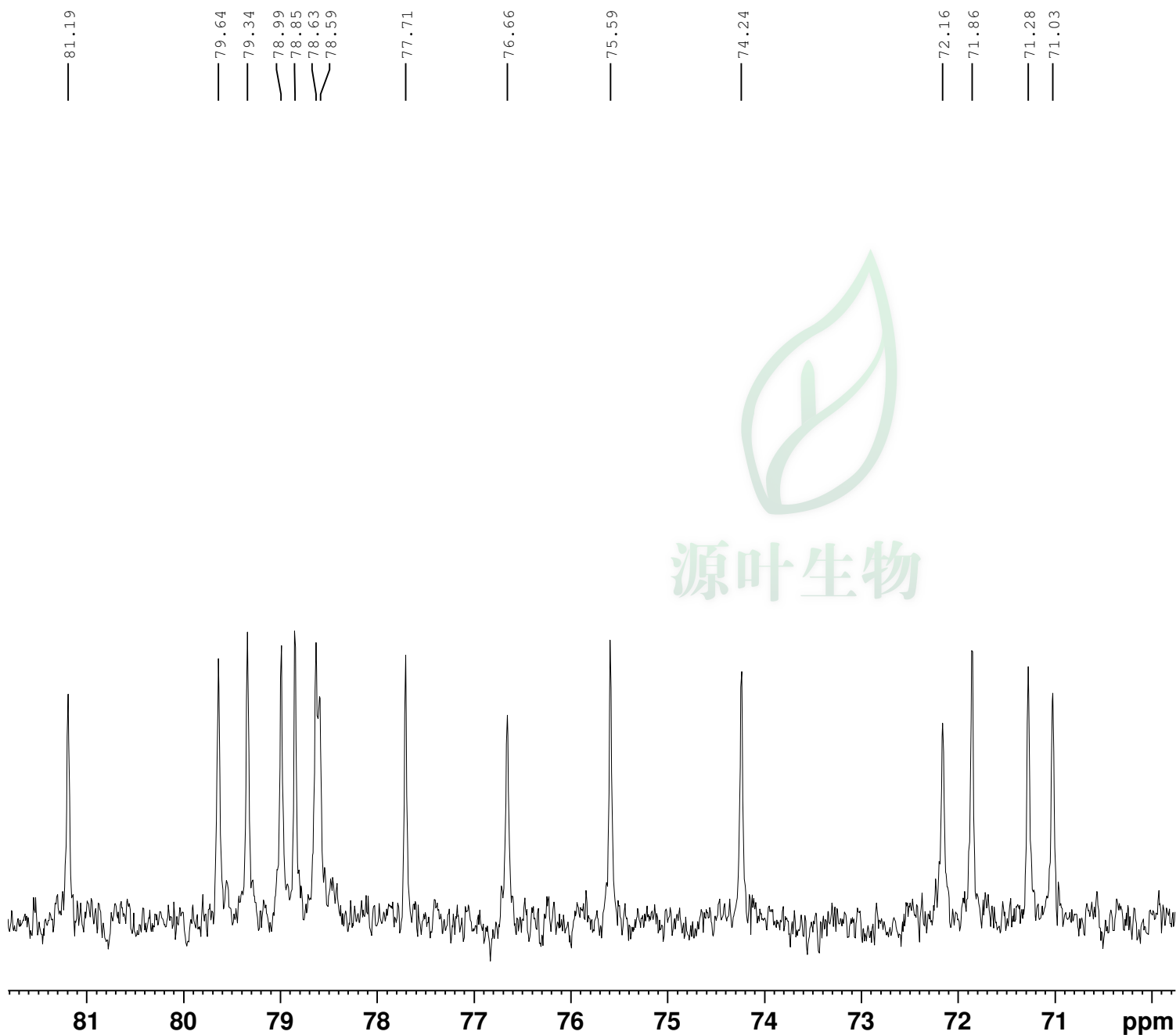
Current Data Parameters  
NAME 7052403  
EXPNO 3  
PROCNO 1

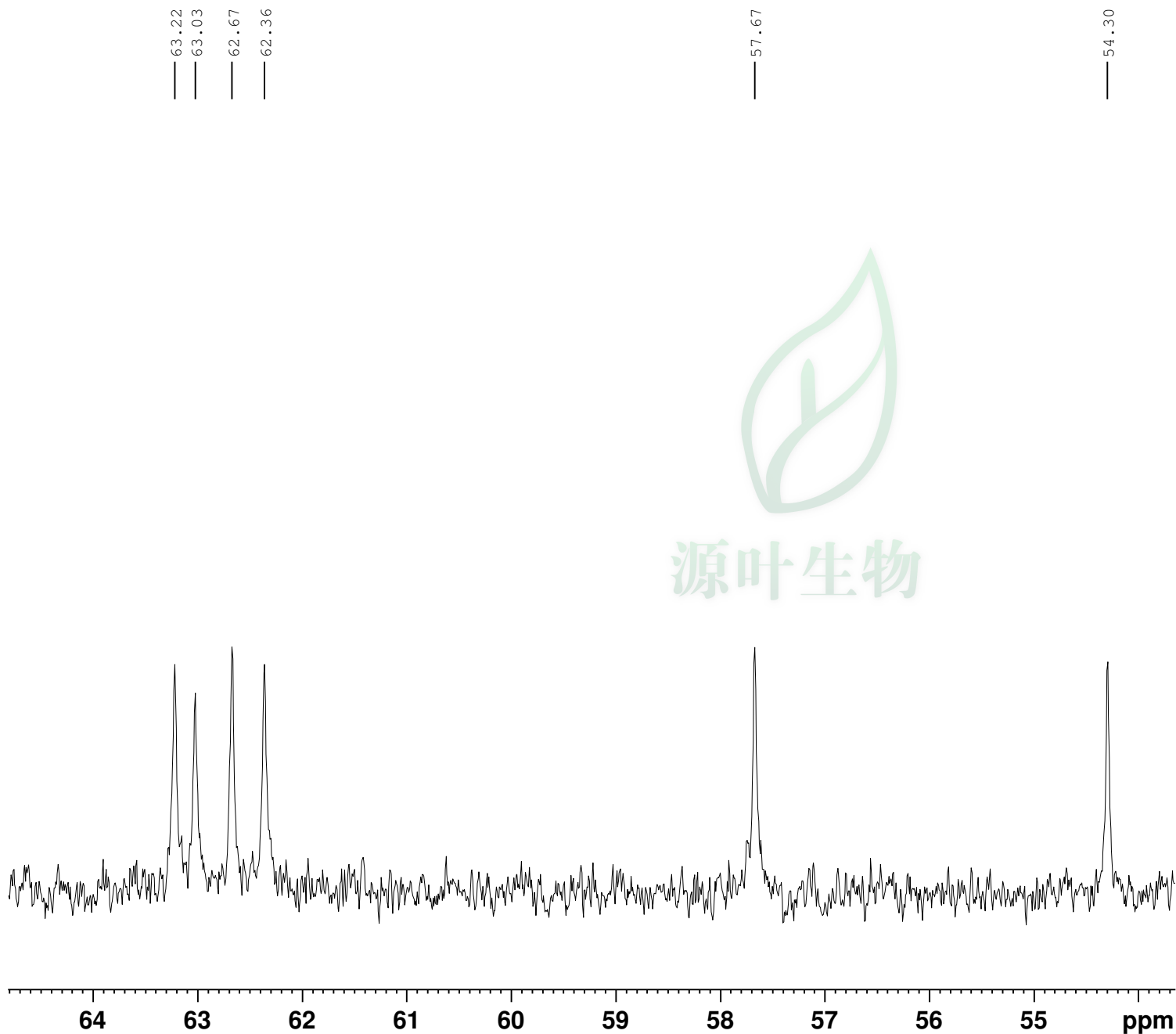
F2 - Acquisition Parameters  
Date\_ 20160530  
Time 21.16  
INSTRUM spect  
PROBHD 5 mm PABBO BB-  
PULPROG zgpg30  
TD 65536  
SOLVENT Pyr  
NS 909  
DS 4  
SWH 24038.461 Hz  
FIDRES 0.366798 Hz  
AQ 1.3631488 sec  
RG 203  
DW 20.800 usec  
DE 6.50 usec  
TE 300.0 K  
D1 2.00000000 sec  
D11 0.03000000 sec  
TD0 1

===== CHANNEL f1 =====  
SFO1 100.6228293 MHz  
NUC1 13C  
P1 9.71 usec  
PLW1 60.00000000 W

===== CHANNEL f2 =====  
SFO2 400.1316005 MHz  
NUC2 1H  
CPDPRG[2] waltz16  
PCPD2 90.00 usec  
PLW2 15.00000000 W  
PLW12 0.34101000 W  
PLW13 0.27621999 W

F2 - Processing parameters  
SI 32768  
SF 100.6128640 MHz  
WDW EM  
SSB 0  
LB 1.00 Hz  
GB 0  
PC 1.40





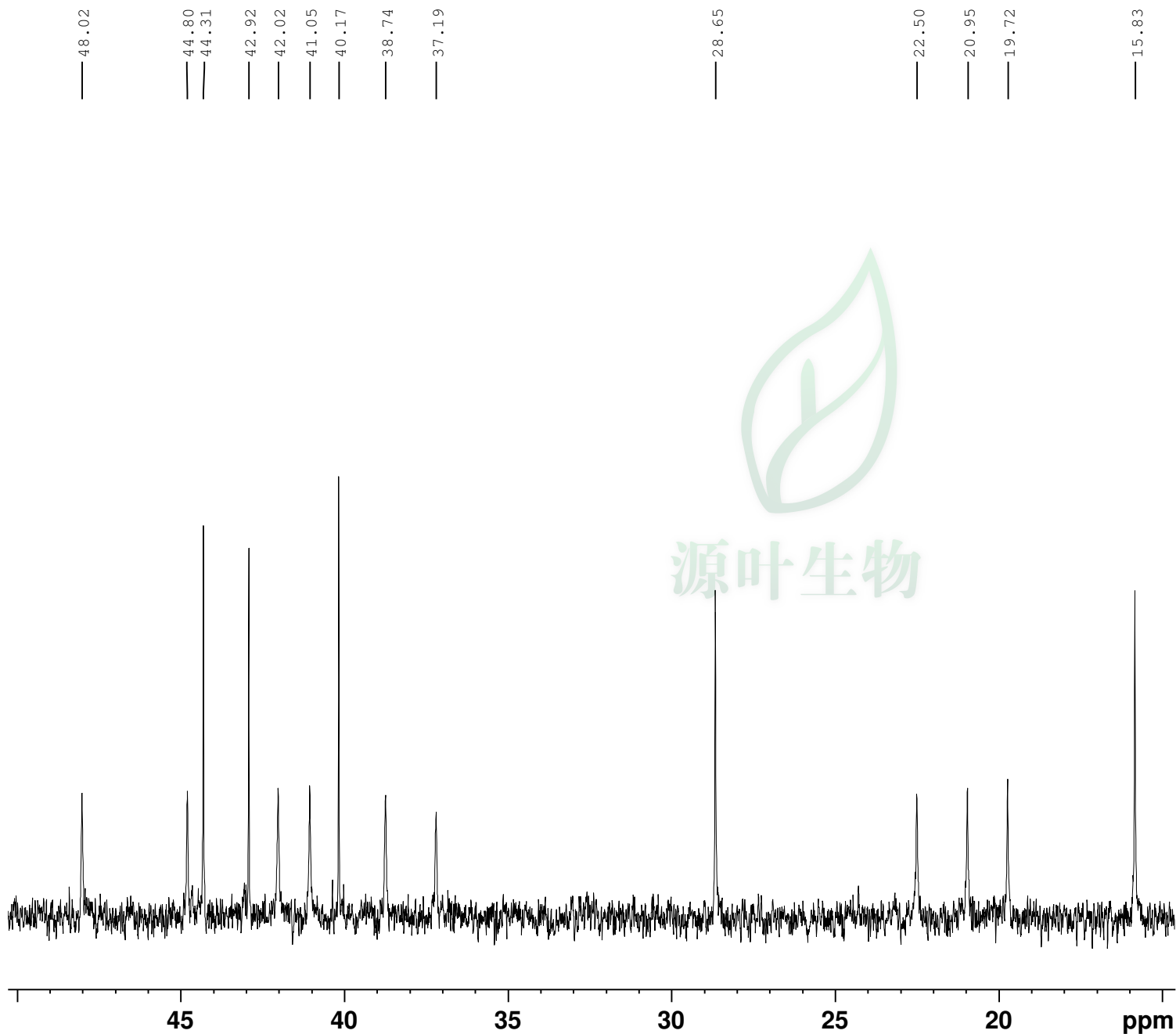
Current Data Parameters  
NAME 7052403  
EXPNO 3  
PROCNO 1

F2 - Acquisition Parameters  
Date\_ 20160530  
Time 21.16  
INSTRUM spect  
PROBHD 5 mm PABBO BB-  
PULPROG zgpg30  
TD 65536  
SOLVENT Pyr  
NS 909  
DS 4  
SWH 24038.461 Hz  
FIDRES 0.366798 Hz  
AQ 1.3631488 sec  
RG 203  
DW 20.800 usec  
DE 6.50 usec  
TE 300.0 K  
D1 2.0000000 sec  
D11 0.03000000 sec  
TD0 1

===== CHANNEL f1 =====  
SFO1 100.6228293 MHz  
NUC1 13C  
P1 9.71 usec  
PLW1 60.00000000 W

===== CHANNEL f2 =====  
SFO2 400.1316005 MHz  
NUC2 1H  
CPDPRG[2] waltz16  
PCPD2 90.00 usec  
PLW2 15.00000000 W  
PLW12 0.34101000 W  
PLW13 0.27621999 W

F2 - Processing parameters  
SI 32768  
SF 100.6128640 MHz  
WDW EM  
SSB 0  
LB 1.00 Hz  
GB 0  
PC 1.40



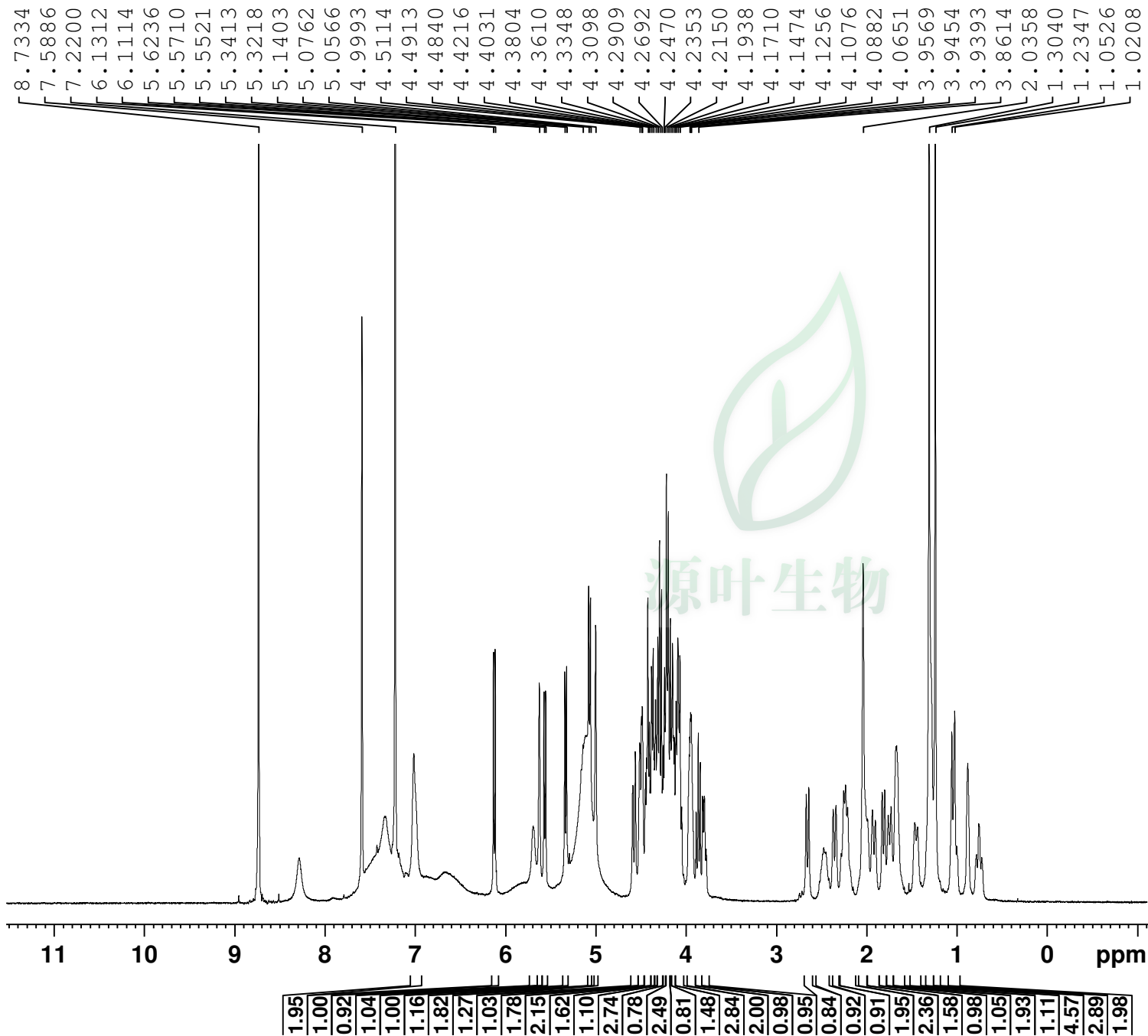
Current Data Parameters  
NAME 7052403  
EXPNO 3  
PROCNO 1

F2 - Acquisition Parameters  
Date\_ 20160530  
Time 21.16  
INSTRUM spect  
PROBHD 5 mm PABBO BB-  
PULPROG zgpg30  
TD 65536  
SOLVENT Pyr  
NS 909  
DS 4  
SWH 24038.461 Hz  
FIDRES 0.366798 Hz  
AQ 1.3631488 sec  
RG 203  
DW 20.800 usec  
DE 6.50 usec  
TE 300.0 K  
D1 2.00000000 sec  
D11 0.03000000 sec  
TD0 1

===== CHANNEL f1 =====  
SFO1 100.6228293 MHz  
NUC1 13C  
P1 9.71 usec  
PLW1 60.00000000 W

===== CHANNEL f2 =====  
SFO2 400.1316005 MHz  
NUC2 1H  
CPDPRG[2] waltz16  
PCPD2 90.00 usec  
PLW2 15.00000000 W  
PLW12 0.34101000 W  
PLW13 0.27621999 W

F2 - Processing parameters  
SI 32768  
SF 100.6128640 MHz  
WDW EM  
SSB 0  
LB 1.00 Hz  
GB 0  
PC 1.40

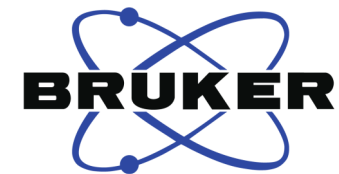
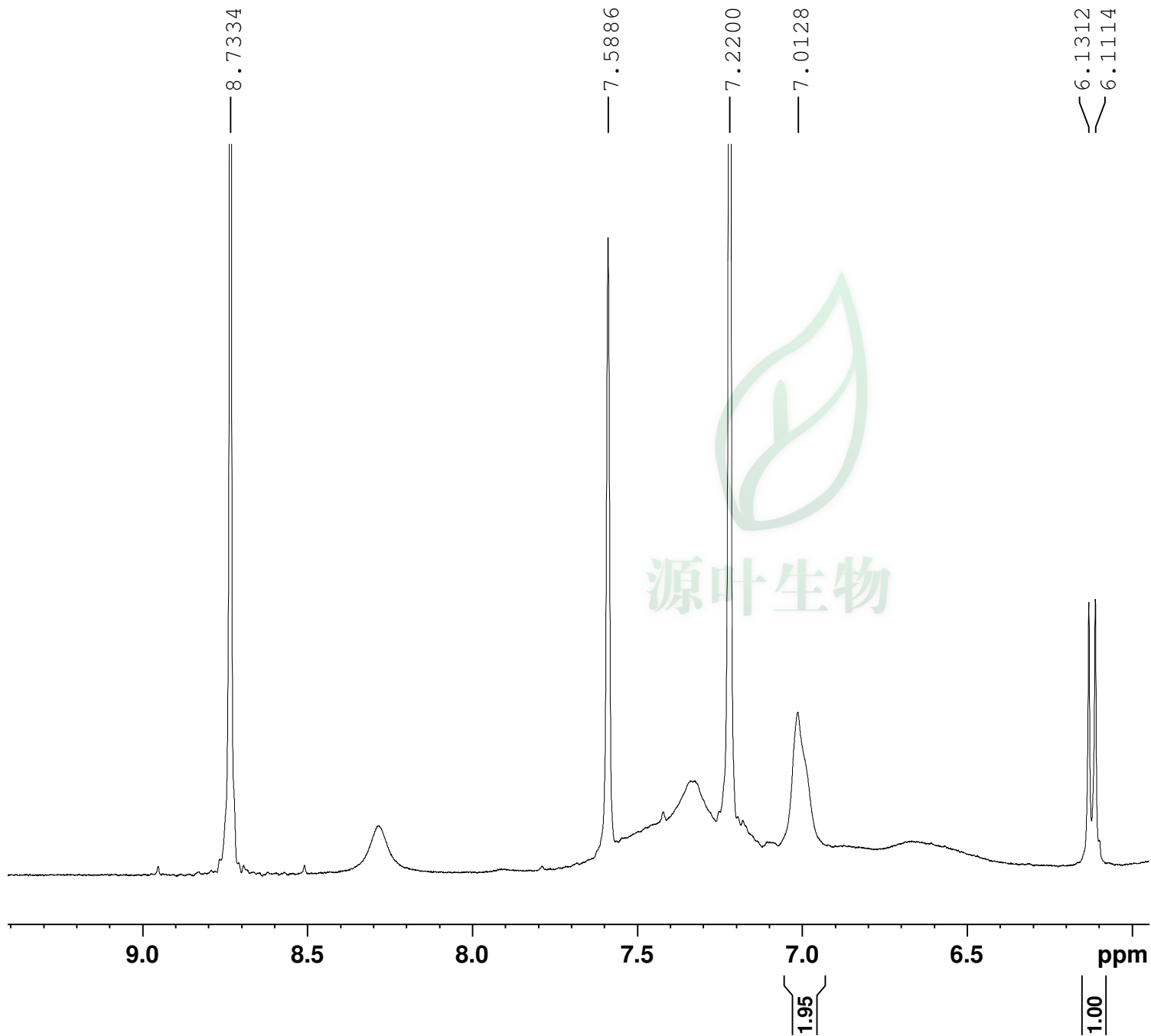


Current Data Parameters  
 NAME 7052403  
 EXPNO 1  
 PROCNO 1

F2 - Acquisition Parameters  
 Date\_ 20160530  
 Time 21.10  
 INSTRUM spect  
 PROBHD 5 mm PABBO BB-  
 PULPROG zg30  
 TD 65536  
 SOLVENT Pyr  
 NS 16  
 DS 2  
 SWH 8012.820 Hz  
 FIDRES 0.122266 Hz  
 AQ 4.0894465 sec  
 RG 64  
 DW 62.400 usec  
 DE 6.50 usec  
 TE 298.0 K  
 D1 1.00000000 sec  
 TD0 1

===== CHANNEL f1 =====  
 SFO1 400.1324710 MHz  
 NUC1 1H  
 P1 13.57 usec  
 PLW1 15.00000000 W

F2 - Processing parameters  
 SI 65536  
 SF 400.1299887 MHz  
 WDW EM  
 SSB 0  
 LB 0.30 Hz  
 GB 0  
 PC 1.00

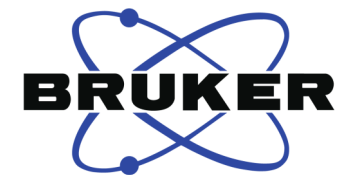


Current Data Parameters  
NAME 7052403  
EXPNO 1  
PROCNO 1

F2 - Acquisition Parameters  
Date\_ 20160530  
Time 21.10  
INSTRUM spect  
PROBHD 5 mm PABBO BB-  
PULPROG zg30  
TD 65536  
SOLVENT Pyr  
NS 16  
DS 2  
SWH 8012.820 Hz  
FIDRES 0.122266 Hz  
AQ 4.0894465 sec  
RG 64  
DW 62.400 usec  
DE 6.50 usec  
TE 298.0 K  
D1 1.00000000 sec  
TD0 1

===== CHANNEL f1 =====  
SFO1 400.1324710 MHz  
NUC1 1H  
P1 13.57 usec  
PLW1 15.00000000 W

F2 - Processing parameters  
SI 65536  
SF 400.1299887 MHz  
WDW EM  
SSB 0  
LB 0.30 Hz  
GB 0  
PC 1.00

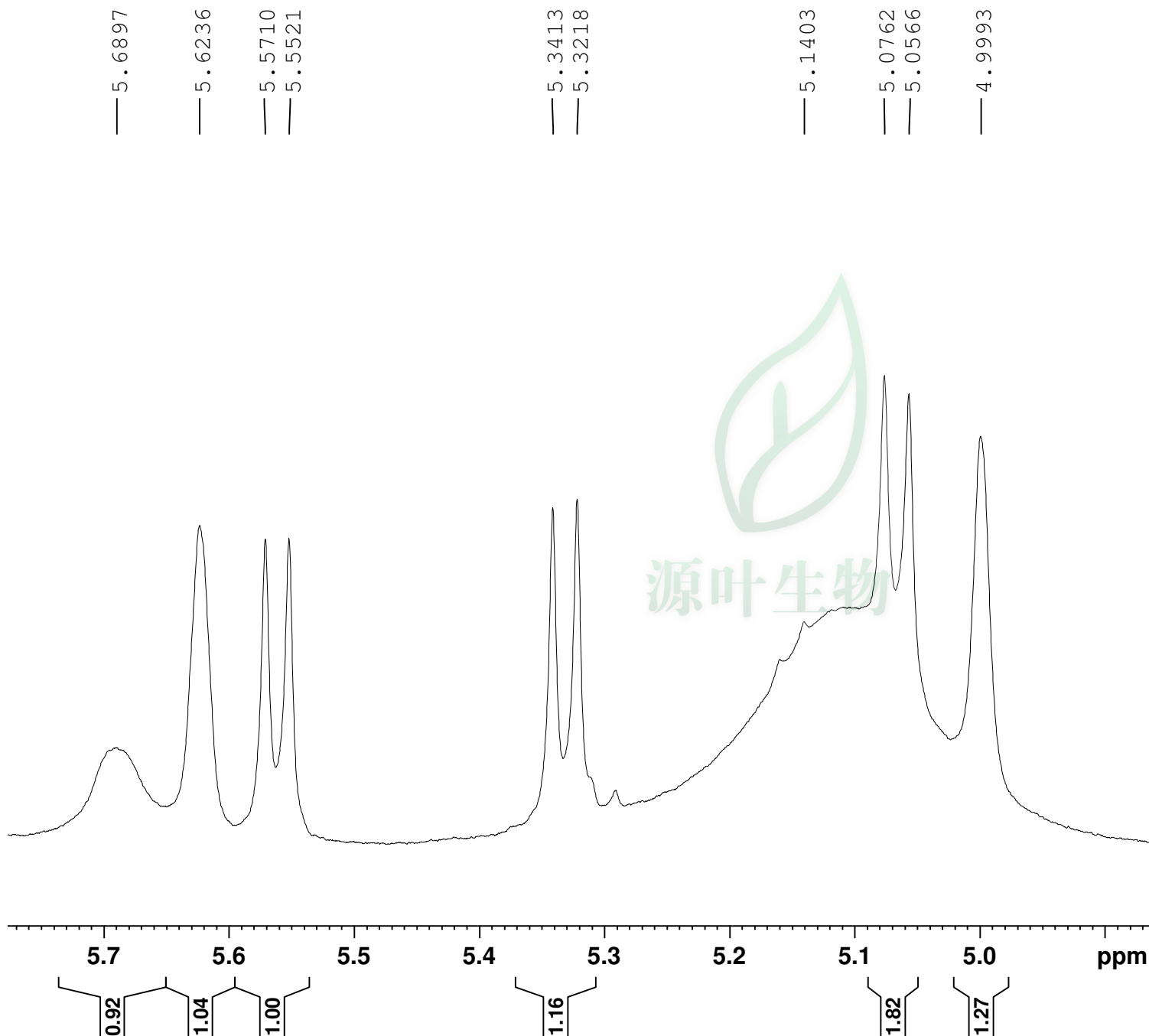


Current Data Parameters  
NAME 7052403  
EXPNO 1  
PROCNO 1

F2 - Acquisition Parameters  
Date\_ 20160530  
Time 21.10  
INSTRUM spect  
PROBHD 5 mm PABBO BB-  
PULPROG zg30  
TD 65536  
SOLVENT Pyr  
NS 16  
DS 2  
SWH 8012.820 Hz  
FIDRES 0.122266 Hz  
AQ 4.0894465 sec  
RG 64  
DW 62.400 usec  
DE 6.50 usec  
TE 298.0 K  
D1 1.00000000 sec  
TD0 1

===== CHANNEL f1 =====  
SFO1 400.1324710 MHz  
NUC1 1H  
P1 13.57 usec  
PLW1 15.00000000 W

F2 - Processing parameters  
SI 65536  
SF 400.1299887 MHz  
WDW EM  
SSB 0  
LB 0.30 Hz  
GB 0  
PC 1.00





— 4.5854  
 — 4.5608  
  
 — 4.5114  
 — 4.4913  
 — 4.4840  
  
 — 4.4460  
 — 4.4338  
 — 4.4216  
  
 — 4.4031  
 — 4.3929  
 — 4.3804  
  
 — 4.3610  
 — 4.3516  
 — 4.3348  
  
 — 4.3098  
 — 4.2909  
  
 — 4.2692  
 — 4.2571  
 — 4.2470  
 — 4.2353  
  
 — 4.2150  
 — 4.1938

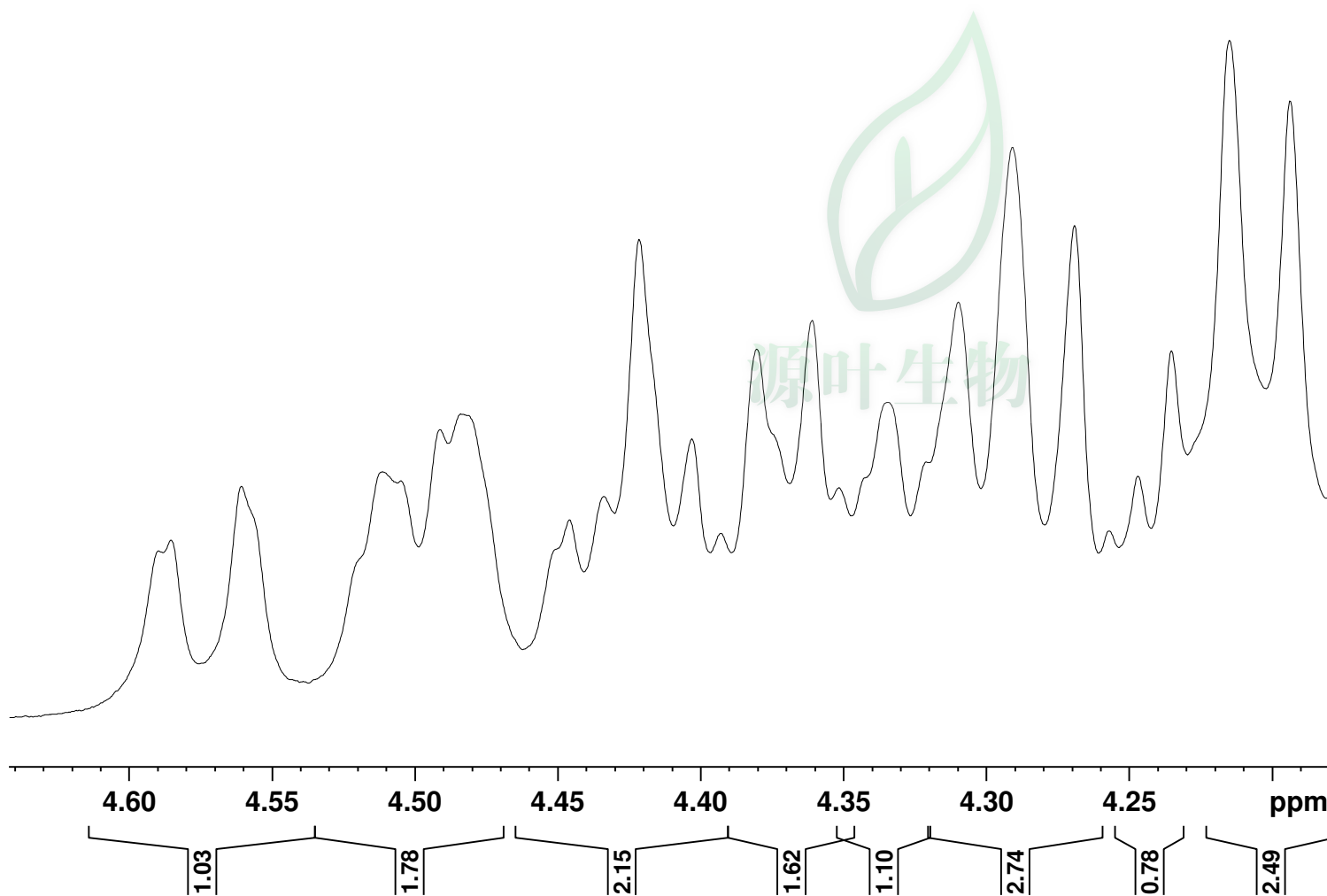


Current Data Parameters  
 NAME 7052403  
 EXPNO 1  
 PROCNO 1

F2 - Acquisition Parameters  
 Date\_ 20160530  
 Time 21.10  
 INSTRUM spect  
 PROBHD 5 mm PABBO BB-  
 PULPROG zg30  
 TD 65536  
 SOLVENT Pyr  
 NS 16  
 DS 2  
 SWH 8012.820 Hz  
 FIDRES 0.122266 Hz  
 AQ 4.0894465 sec  
 RG 64  
 DW 62.400 usec  
 DE 6.50 usec  
 TE 298.0 K  
 D1 1.00000000 sec  
 TD0 1

===== CHANNEL f1 =====  
 SFO1 400.1324710 MHz  
 NUC1 1H  
 P1 13.57 usec  
 PLW1 15.00000000 W

F2 - Processing parameters  
 SI 65536  
 SF 400.1299887 MHz  
 WDW EM  
 SSB 0  
 LB 0.30 Hz  
 GB 0  
 PC 1.00



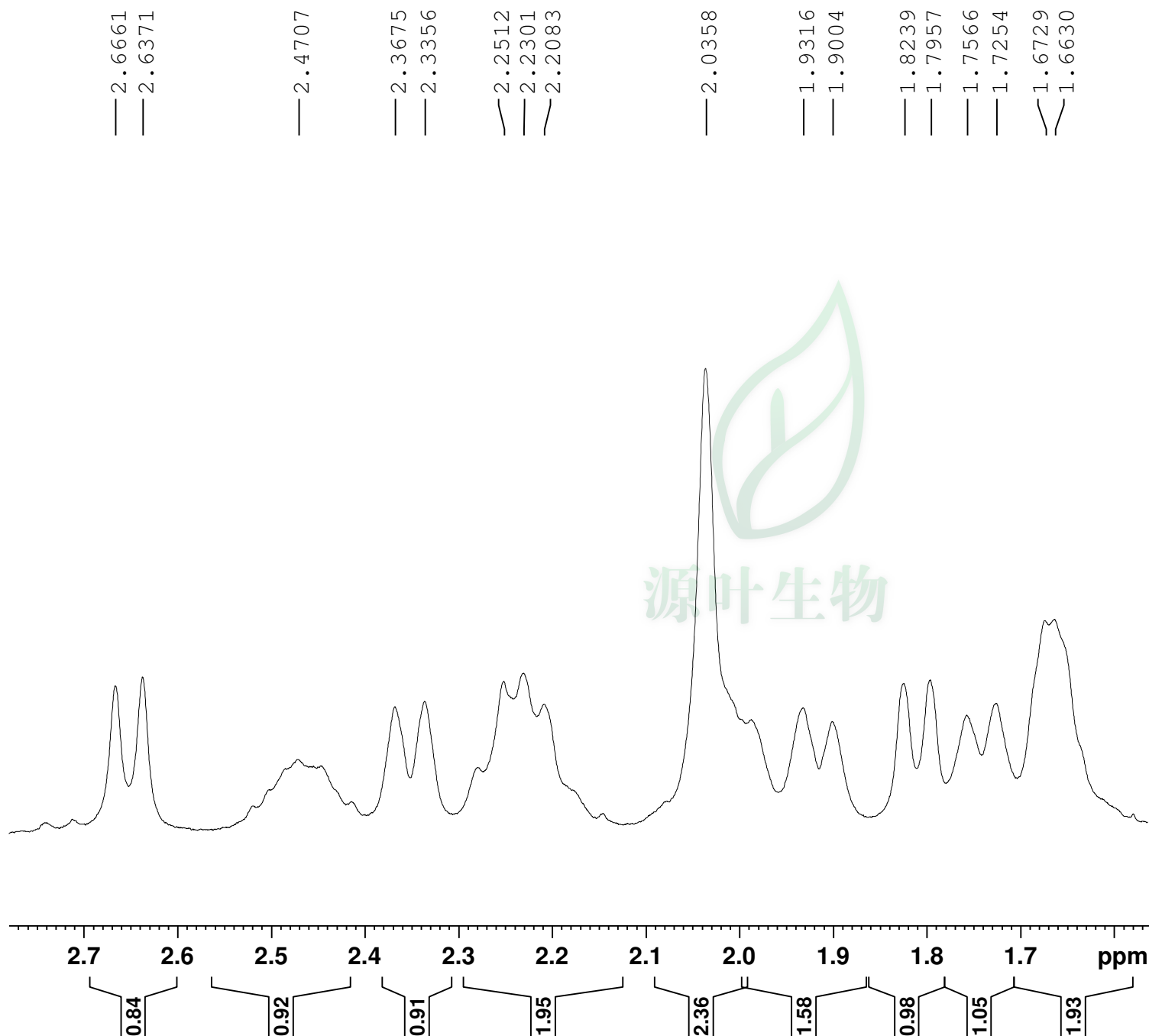


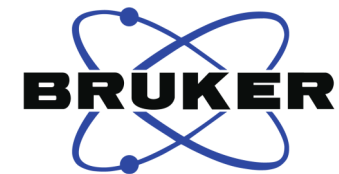
Current Data Parameters  
NAME 7052403  
EXPNO 1  
PROCNO 1

F2 - Acquisition Parameters  
Date\_ 20160530  
Time 21.10  
INSTRUM spect  
PROBHD 5 mm PABBO BB-  
PULPROG zg30  
TD 65536  
SOLVENT Pyr  
NS 16  
DS 2  
SWH 8012.820 Hz  
FIDRES 0.122266 Hz  
AQ 4.0894465 sec  
RG 64  
DW 62.400 usec  
DE 6.50 usec  
TE 298.0 K  
D1 1.00000000 sec  
TD0 1

===== CHANNEL f1 =====  
SFO1 400.1324710 MHz  
NUC1 1H  
P1 13.57 usec  
PLW1 15.00000000 W

F2 - Processing parameters  
SI 65536  
SF 400.1299887 MHz  
WDW EM  
SSB 0  
LB 0.30 Hz  
GB 0  
PC 1.00





Current Data Parameters  
NAME 7052403  
EXPNO 1  
PROCNO 1

F2 - Acquisition Parameters  
Date\_ 20160530  
Time 21.10  
INSTRUM spect  
PROBHD 5 mm PABBO BB-  
PULPROG zg30  
TD 65536  
SOLVENT Pyr  
NS 16  
DS 2  
SWH 8012.820 Hz  
FIDRES 0.122266 Hz  
AQ 4.0894465 sec  
RG 64  
DW 62.400 usec  
DE 6.50 usec  
TE 298.0 K  
D1 1.00000000 sec  
TD0 1

===== CHANNEL f1 =====  
SFO1 400.1324710 MHz  
NUC1 1H  
P1 13.57 usec  
PLW1 15.00000000 W

F2 - Processing parameters  
SI 65536  
SF 400.1299887 MHz  
WDW EM  
SSB 0  
LB 0.30 Hz  
GB 0  
PC 1.00

