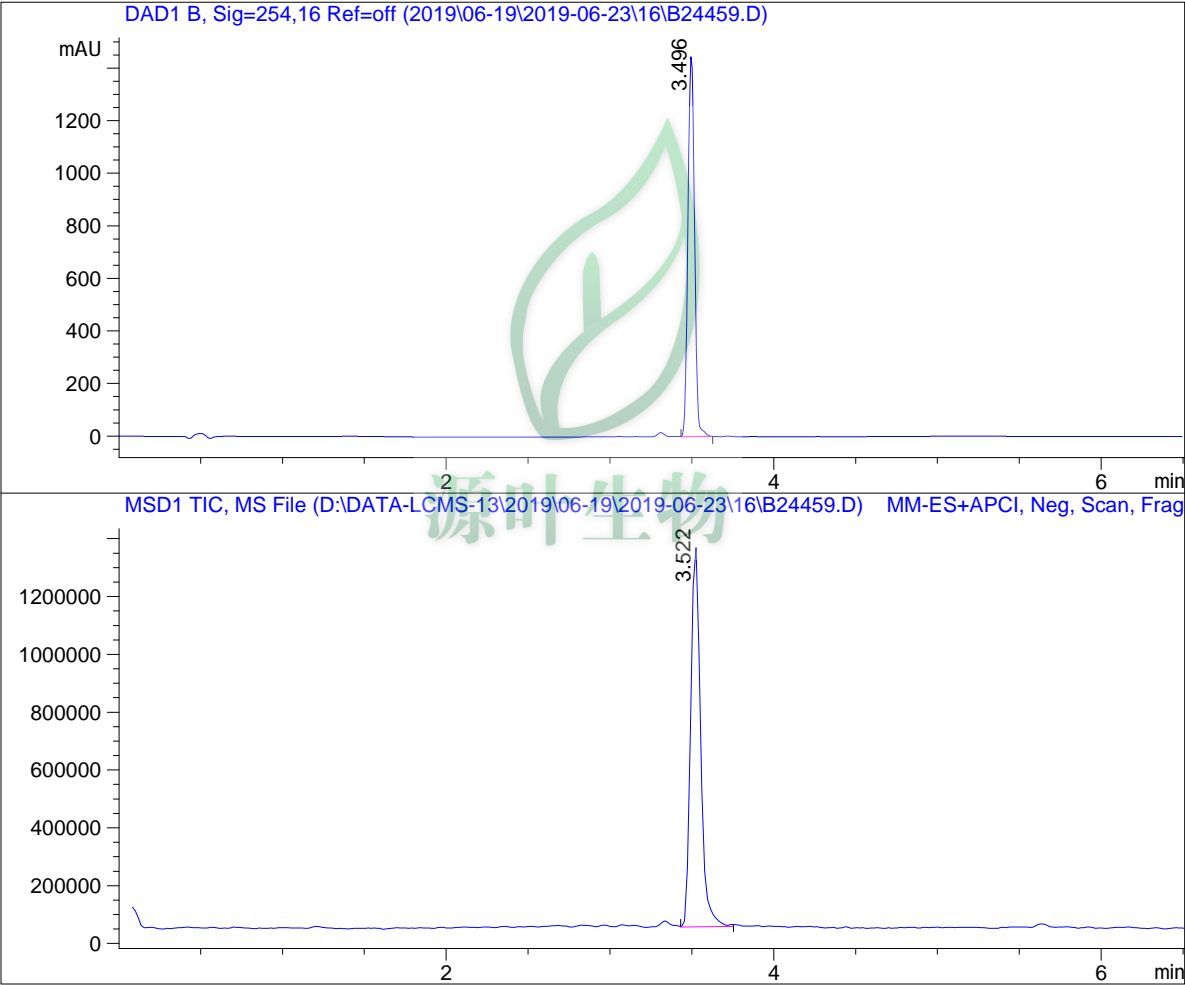


LC - MS Report

Sample Name : B24459
Data File : 2019\06-19\2019-06-23\16\B24459.D
Injection Date : Sun, 23. Jun. 2019 Inj. Vol. : 5ul
Acq Operator : LCMS-13 Location : Vial 71
Acq. Method : D:\data-lcms-13\2019\06-19\2019-06-23\16\N-05-95-C2.M
Sample Info.: column:C18;column size:4.6*30mm ;mobile phase:B(ACN),
A(0.02%NH4Ac); gradient(B%):as Acq.Method above



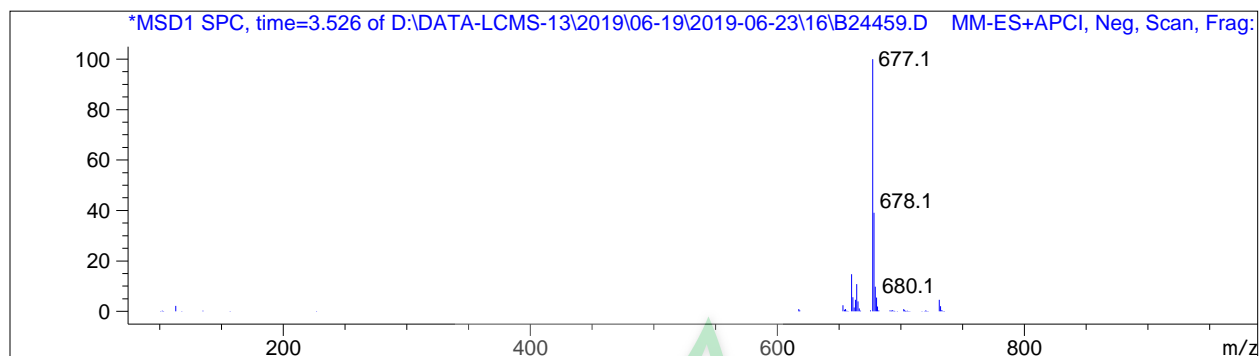
=====
Integration Results
=====

Signal 1: DAD1 B, Sig=254,16 Ref=off

| # | R.T. | Type | Height | Height% | Width | Area | Area % |
|---|-------|------|----------|---------|-------|----------|---------|
| 1 | 3.496 | BB | 1449.822 | 100.000 | 0.045 | 4084.004 | 100.000 |

Signal 2: MSD1 TIC, MS File

| # | R.T. | Type | Height | Height% | Width | Area | Area % |
|---|-------|------|------------|---------|-------|------------|---------|
| 1 | 3.522 | VB | 1.324e+006 | 100.000 | 0.065 | 5.557e+006 | 100.000 |



*** End of Report ***



源叶生物