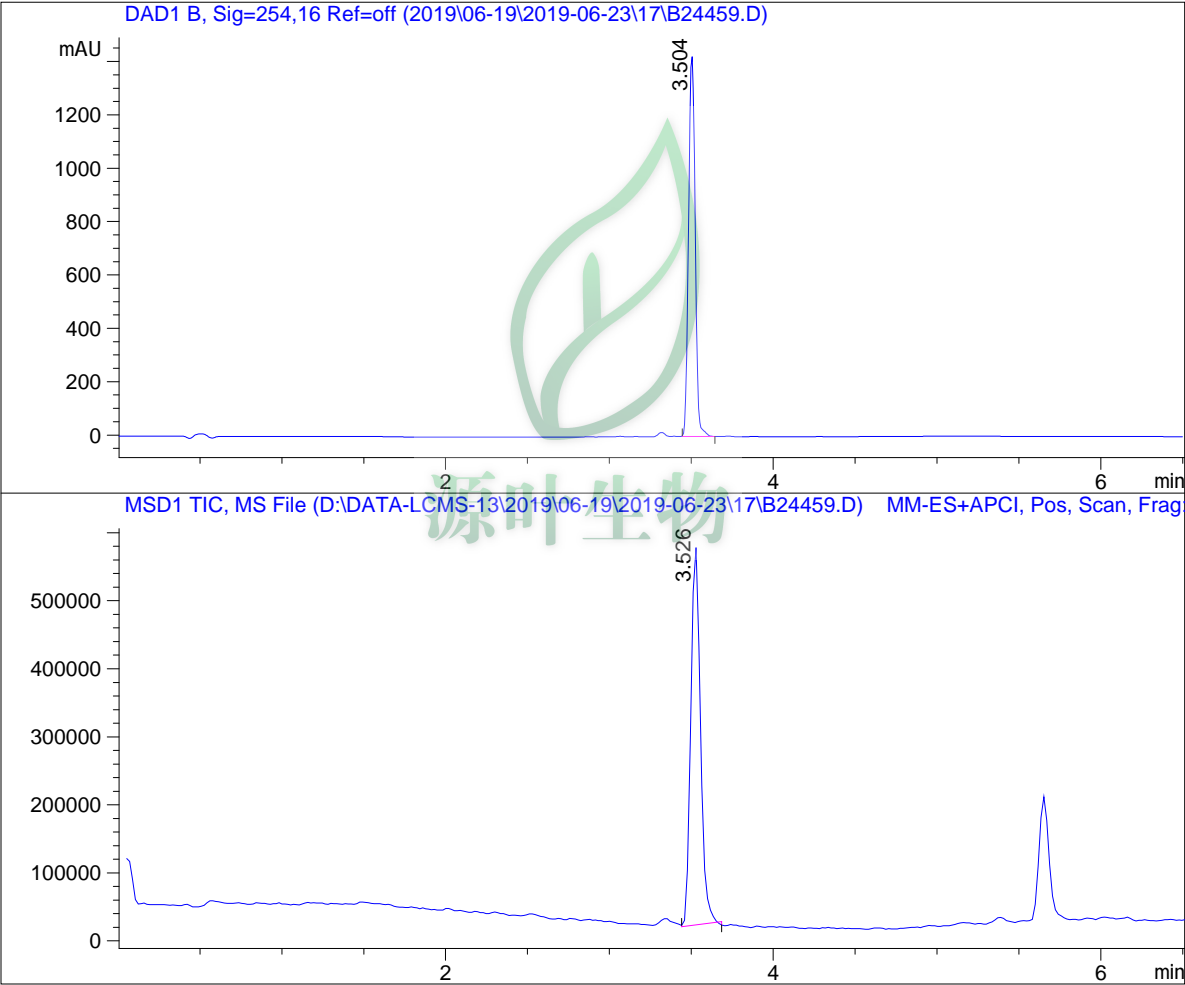


# LC - MS Report

Sample Name : B24459  
Data File D:\DATA-LCMS-13\2019\06-19\2019-06-23\17\B24459.D  
Injection Date : Sun, 23. Jun. 2019 Inj. Vol. : 5ul  
Acq Operator : LCMS-13 Location : Vial 71  
Acq. Method : D:\data-lcms-13\2019\06-19\2019-06-23\17\P-05-95-C2.M  
Sample Info.: column:C18;column size:4.6\*30mm ;mobile phase:B(ACN),  
A(0.02%NH4Ac); gradient(B%):as Acq.Method above



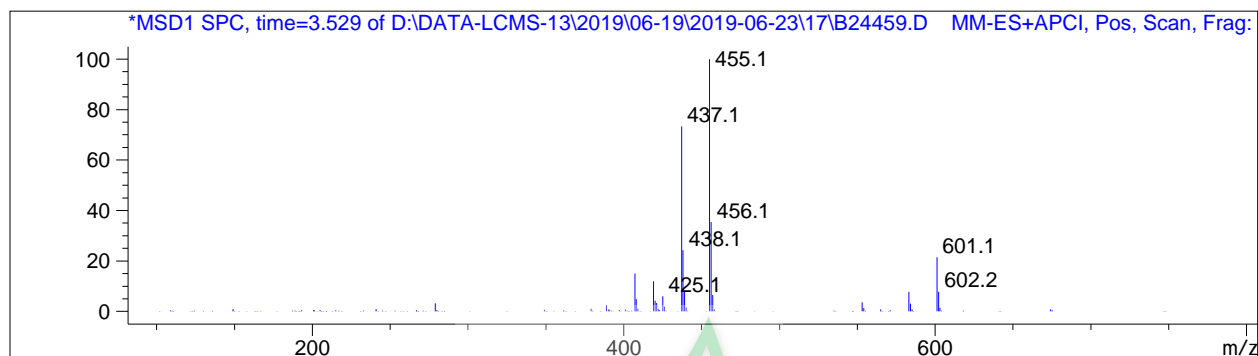
=====  
Integration Results  
=====

Signal 1: DAD1 B, Sig=254,16 Ref=off

#	R.T.	Type	Height	Height%	Width	Area	Area %
1	3.504	BB	1428.796	100.000	0.045	4032.685	100.000

Signal 2: MSD1 TIC, MS File

#	R.T.	Type	Height	Height%	Width	Area	Area %
1	3.526	MM	567721.688	100.000	0.067	2.277e+006	100.000



\*\*\* End of Report \*\*\*



源叶生物