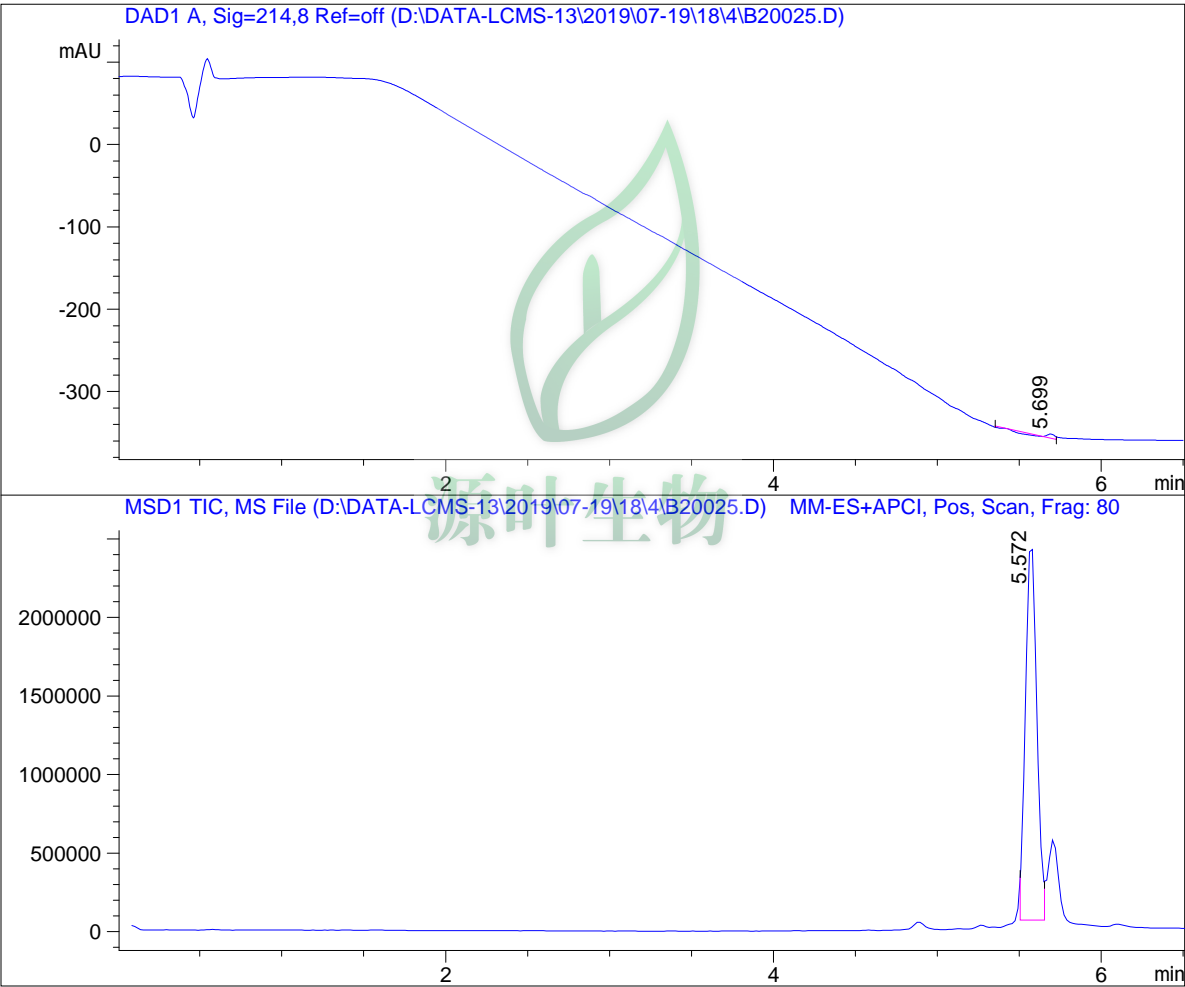


LC - MS Report

Sample Name : B20025
Data File : D:\DATA-LCMS-13\2019\07-19\18\4\B20025.D
Injection Date : Thu, 18. Jul. 2019 Inj. Vol. : 5ul
Acq Operator : LCMS-13 Location : Vial 72
Acq. Method : D:\data-lcms-13\2019\07-19\18\4\P-05-95.M
Method Info.: column:C18;column size:4.6*50mm ;mobile phase:B(ACN),
A(0.02%NH4Ac); gradient(B%):as Acq.Method above



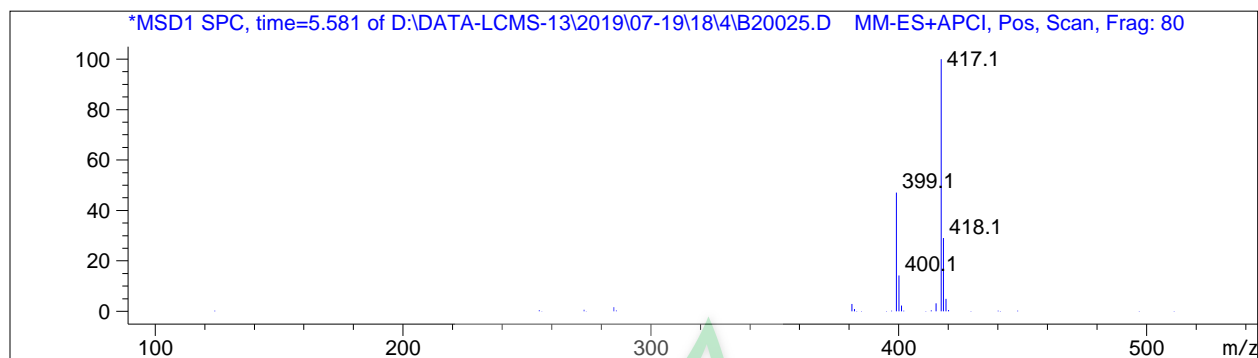
=====
Integration Results
=====

Signal 1: DAD1 A, Sig=214,8 Ref=off

#	R.T.	Type	Height	Height%	Width	Area	Area %
1	5.699	MM	4.948	100.000	0.055	16.397	100.000

Signal 2: MSD1 TIC, MS File

#	R.T.	Type	Height	Height%	Width	Area	Area %
1	5.572	FM	2.455e+006	100.000	0.078	1.146e+007	100.000



*** End of Report ***



源叶生物