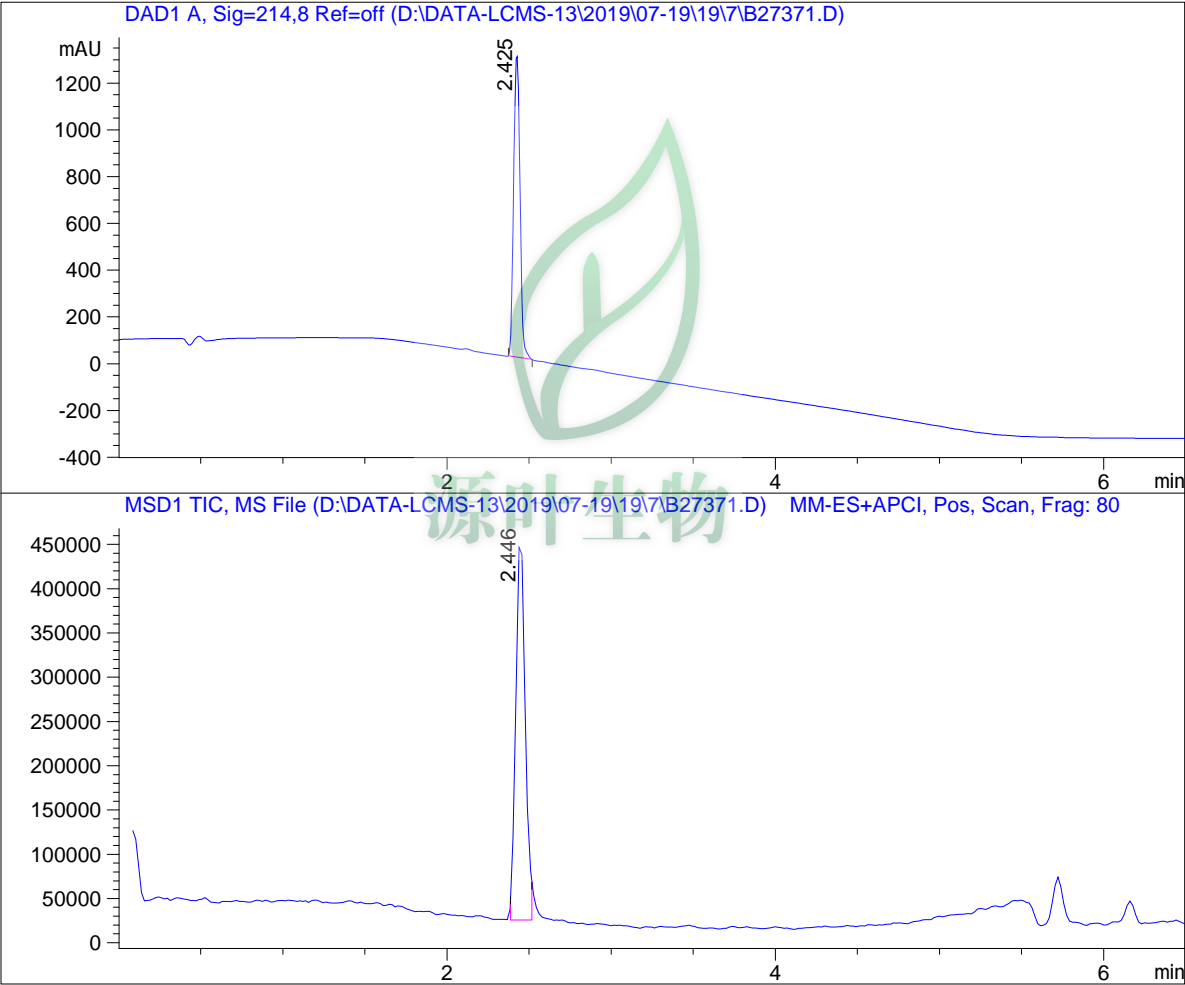


# LC - MS Report

Sample Name : B27371  
Data File : D:\DATA-LCMS-13\2019\07-19\19\7\B27371.D  
Injection Date : Sun, 28. Jul. 2019 Inj. Vol. : 3ul  
Acq Operator : LCMS-13 Location : Vial 72  
Acq. Method : D:\data-lcms-13\2019\07-19\19\7\P-05-95.M  
Method Info.: column:C18;column size:4.6\*50mm ;mobile phase:B(ACN),  
A(0.02%NH4Ac); gradient(B%):as Acq.Method above



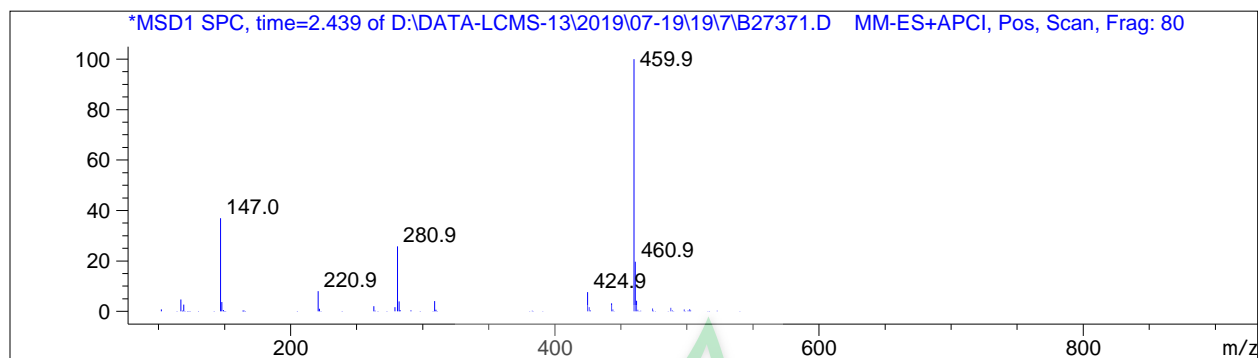
=====  
Integration Results  
=====

Signal 1: DAD1 A, Sig=214,8 Ref=off

#	R.T.	Type	Height	Height%	Width	Area	Area %
1	2.425	MM	1305.085	100.000	0.045	3491.812	100.000

Signal 2: MSD1 TIC, MS File

#	R.T.	Type	Height	Height%	Width	Area	Area %
1	2.446	MM	444310.500	100.000	0.064	1.697e+006	100.000



\*\*\* End of Report \*\*\*



源叶生物