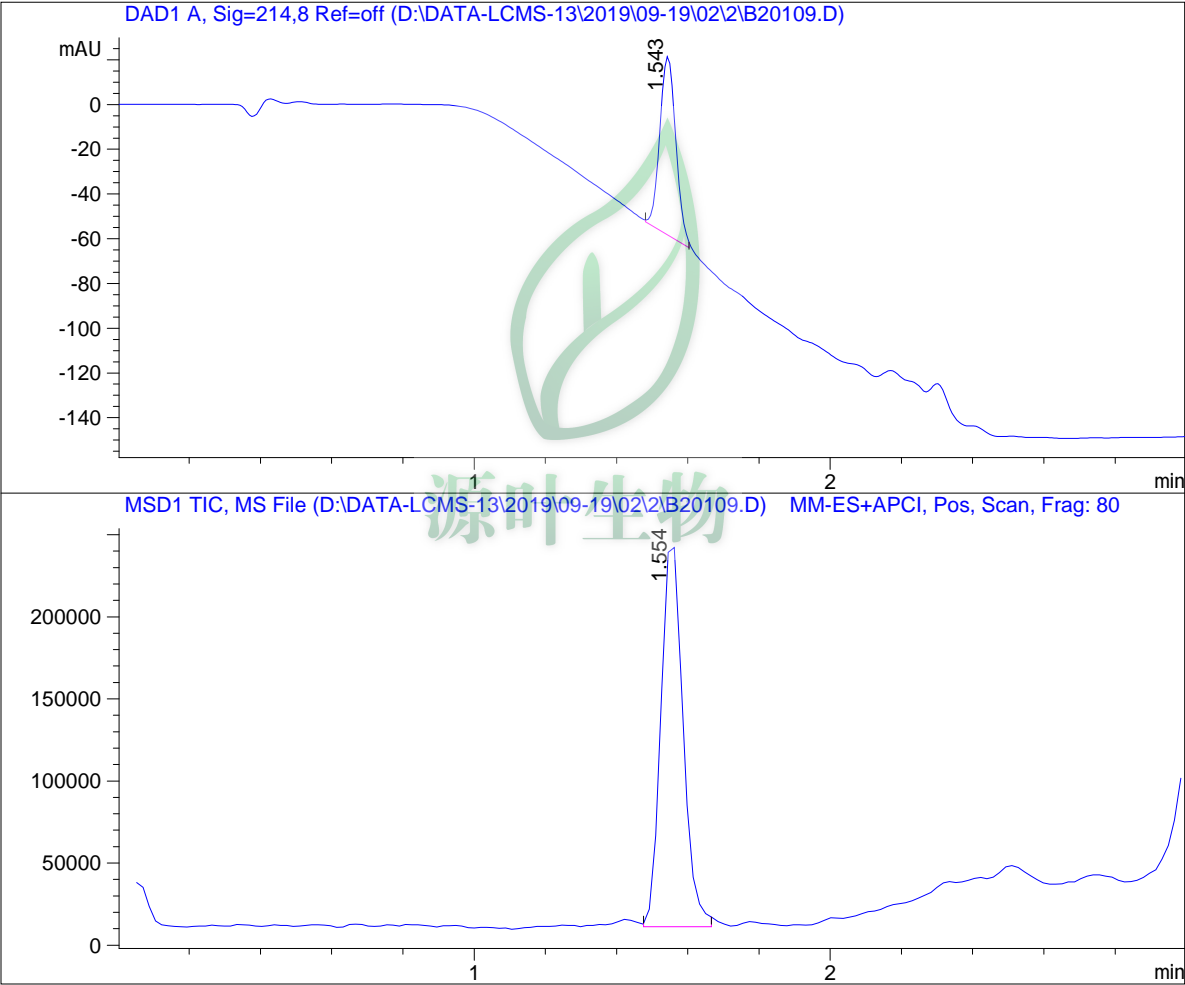


LC - MS Report

Sample Name : B20109
Data File : D:\DATA-LCMS-13\2019\09-19\02\2\B20109.D
Injection Date : Mon, 2. Sep. 2019 Inj. Vol. : 2ul
Acq Operator : LCMS-13 Location : Vial 11
Acq. Method : D:\data-lcms-13\2019\09-19\02\2\P-05-95-3MIN.M
Method Info. : column:C18;column size:4.6*50mm ;mobile phase:B(ACN),
A(0.02%NH4Ac); gradient(B%):as Acq.Method above



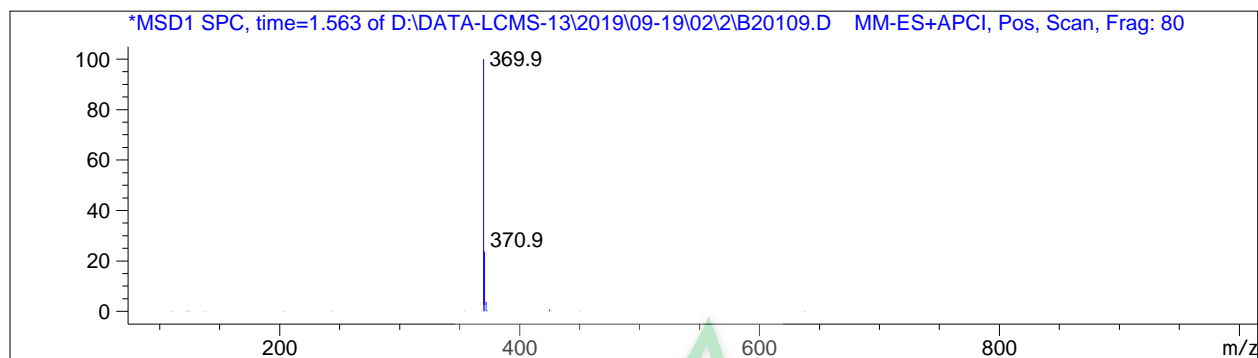
=====
Integration Results
=====

Signal 1: DAD1 A, Sig=214,8 Ref=off

#	R.T.	Type	Height	Height%	Width	Area	Area %
1	1.543	MM	79.691	100.000	0.052	249.878	100.000

Signal 2: MSD1 TIC, MS File

#	R.T.	Type	Height	Height%	Width	Area	Area %
1	1.554	MM	242432.234	100.000	0.069	1.003e+006	100.000



*** End of Report ***



源叶生物