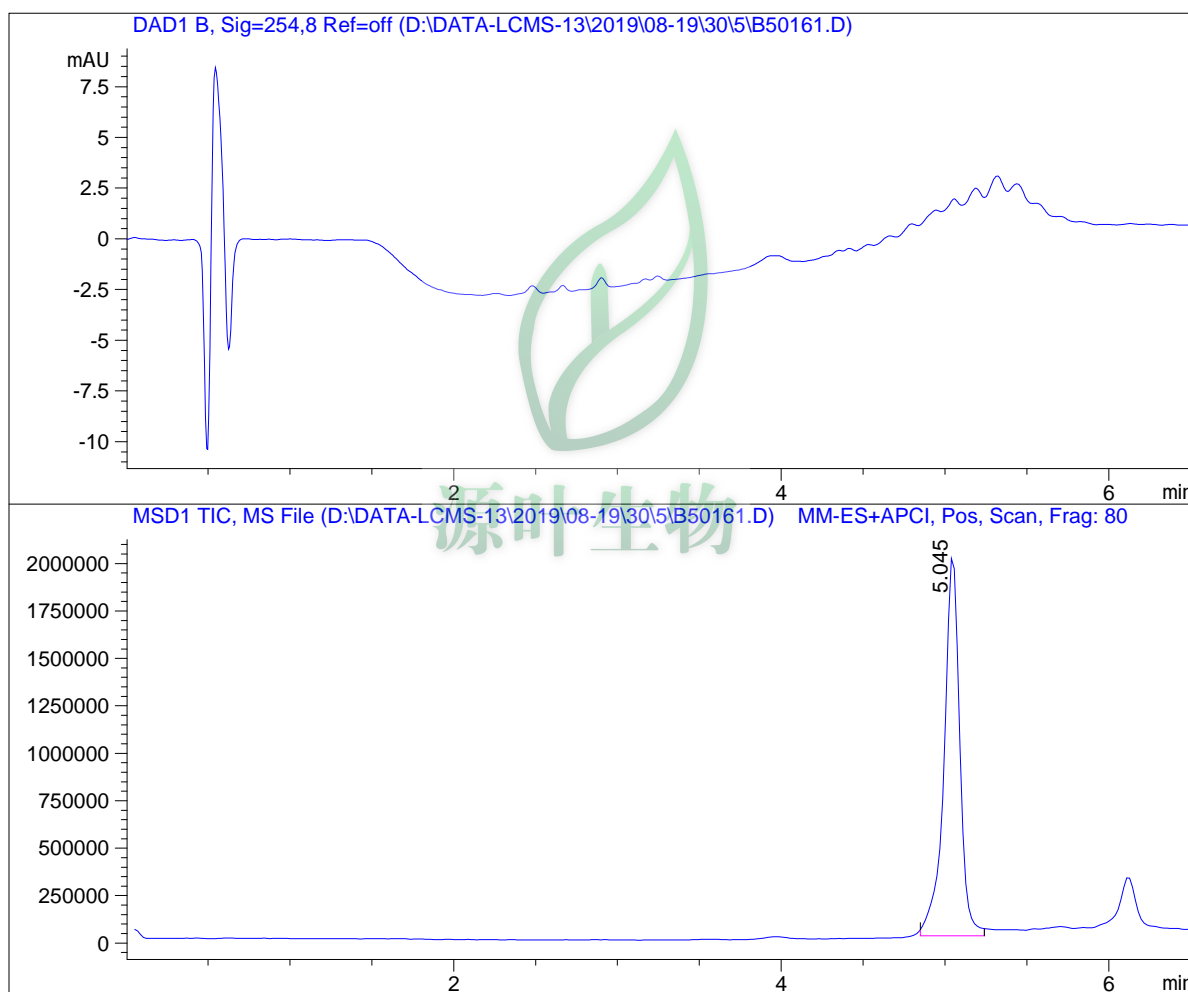


LC - MS Report

Sample Name : B50161
 Data File : D:\DATA-LCMS-13\2019\08-19\30\5\B50161.D
 Injection Date : Fri, 30. Aug. 2019 Inj. Vol. : 5ul
 Acq Operator : LCMS-13 Location : Vial 62
 Acq. Method : D:\data-lcms-13\2019\08-19\30\5\P-05-95.M
 Method Info. : column:C18;column size:4.6*50mm ;mobile phase:B(ACN),
 A(0.02%NH4Ac); gradient(B%):as Acq.Method above



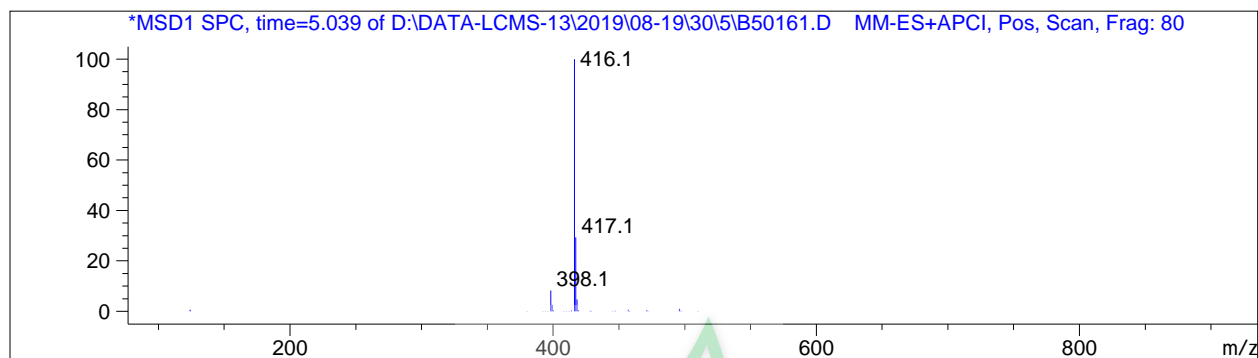
Integration Results

Signal 1: DAD1 B, Sig=254,8 Ref=off

#	R.T.	Type	Height	Height%	Width	Area	Area %
---	------	------	--------	---------	-------	------	--------

Signal 2: MSD1 TIC, MS File

#	R.T.	Type	Height	Height%	Width	Area	Area %
1	5.045	MM	2.027e+006	100.000	0.110	1.337e+007	100.000



*** End of Report ***



源叶生物