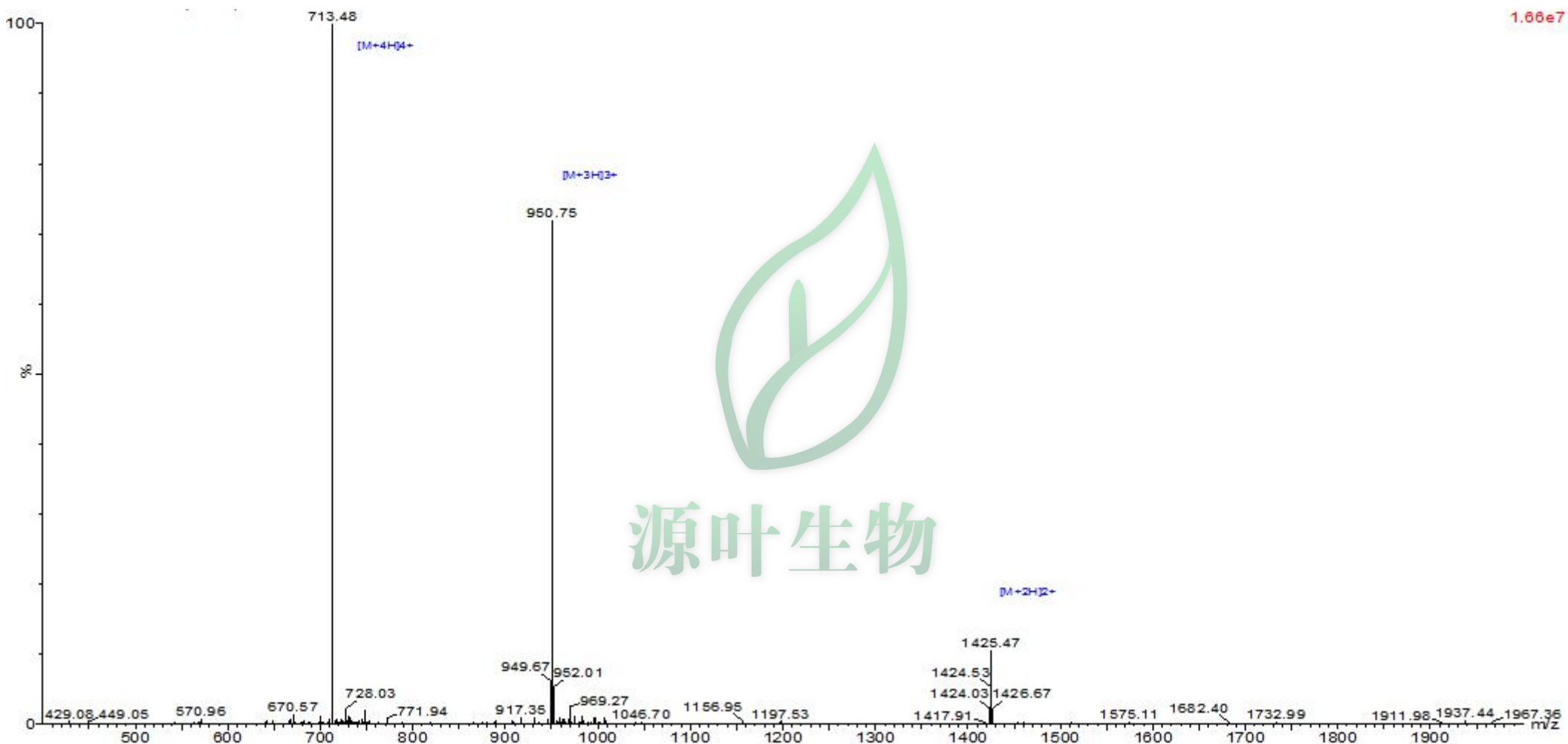


MASS SPECTROMETRY REPORT



Sample Description		Instrument		Waters ZQ2000	
Analyzed date:	2019-06-12	Probe:	ESI	Probe Bias:	+4.5kv
Analyst:	PY	Nebulizer Gas Flow:	1.5L/min	Detector:	1.5kv
Sample:	Melittin	CDL:	-20.0v	T. Flow:	0.2ml/min
M.W.:	2846.46	CDL Temp.:	250 °C	B. Conc.:	50%H2O/50%ACN
Lot. No.:		Block Temp.:	200 °C		