

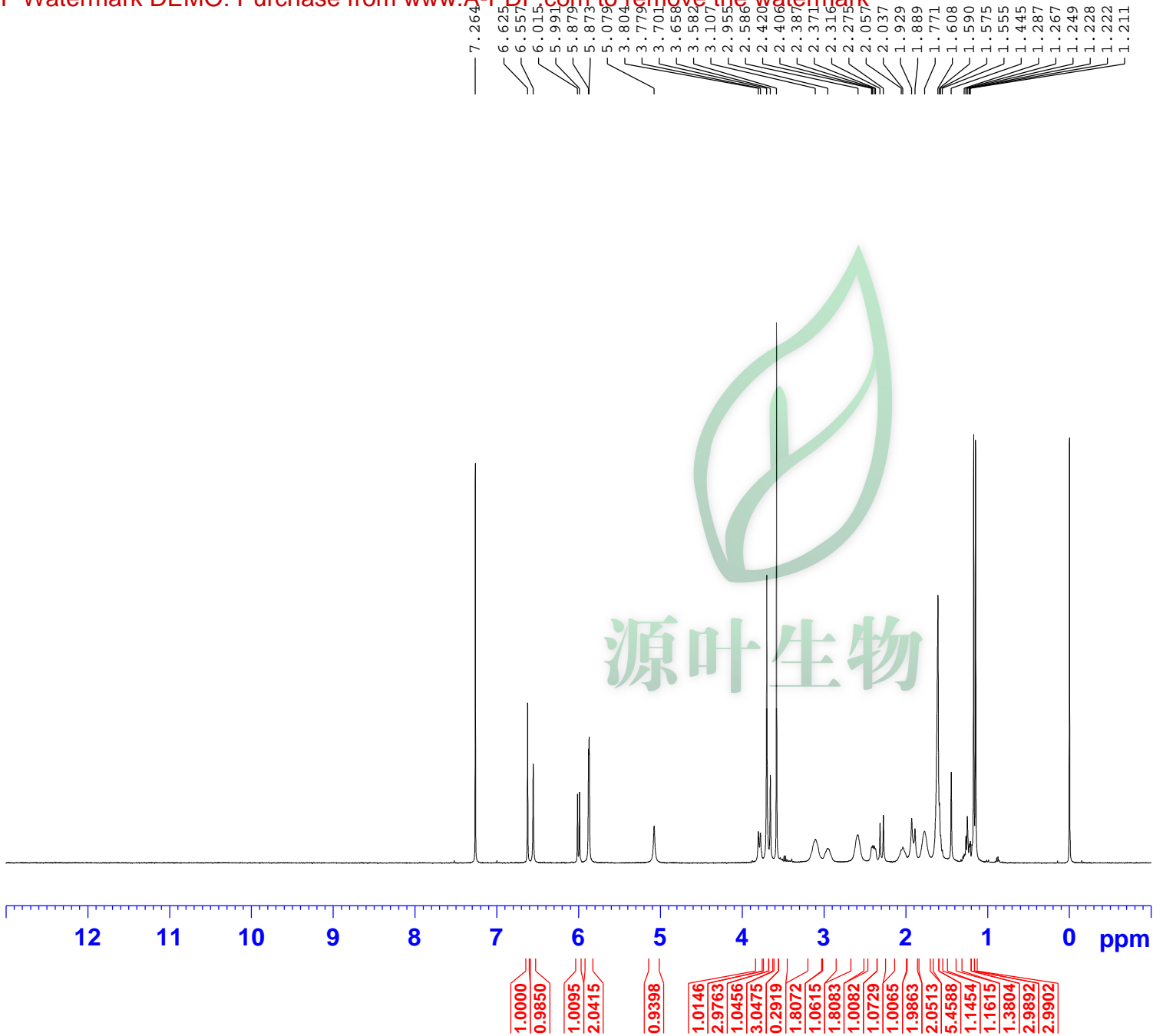


Current Data Parameters
NAME JT-AKTIN-HARRING-TONINE-H1-CDCl3-20170210
EXPNO 20
PROCNO 1

F2 - Acquisition Parameters
Date_ 20170210
Time 12.56
INSTRUM spect
PROBHD 5 mm PABBO BB/
PULPROG zg30
TD 65536
SOLVENT CDCl3
NS 16
DS 2
SWH 8223.685 Hz
FIDRES 0.125483 Hz
AQ 3.9846387 sec
RG 197.41
DW 60.800 usec
DE 8.00 usec
TE 294.2 K
D1 1.00000000 sec
TD0 1

===== CHANNEL f1 =====
NUC1 1H
P1 12.80 usec
PLW1 15.84899998 W
SFO1 400.1632013 MHz

F2 - Processing parameters
SI 65536
SF 400.1600063 MHz
WDW EM
SSB 0
LB 0.30 Hz
GB 0
PC 1.00



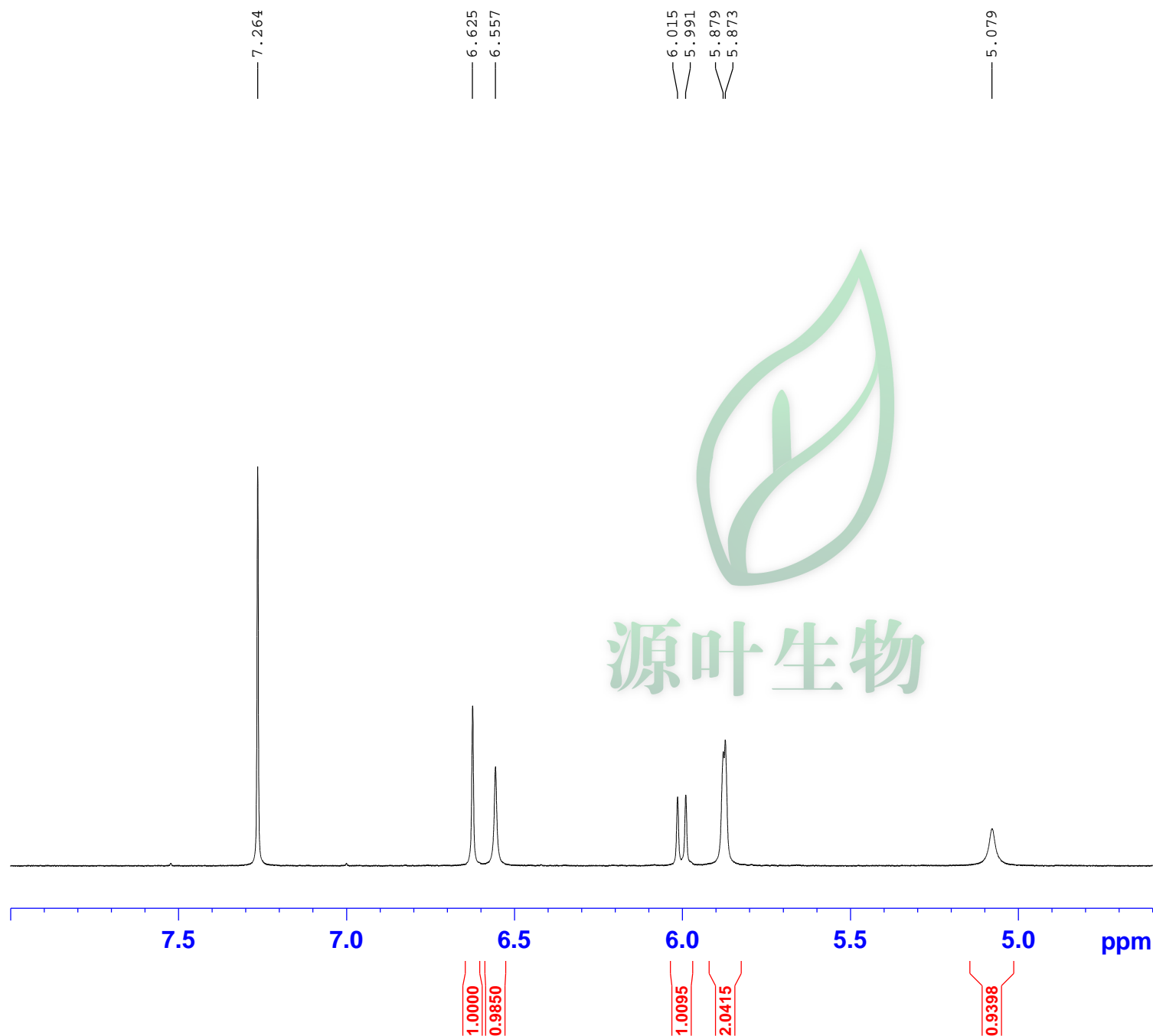


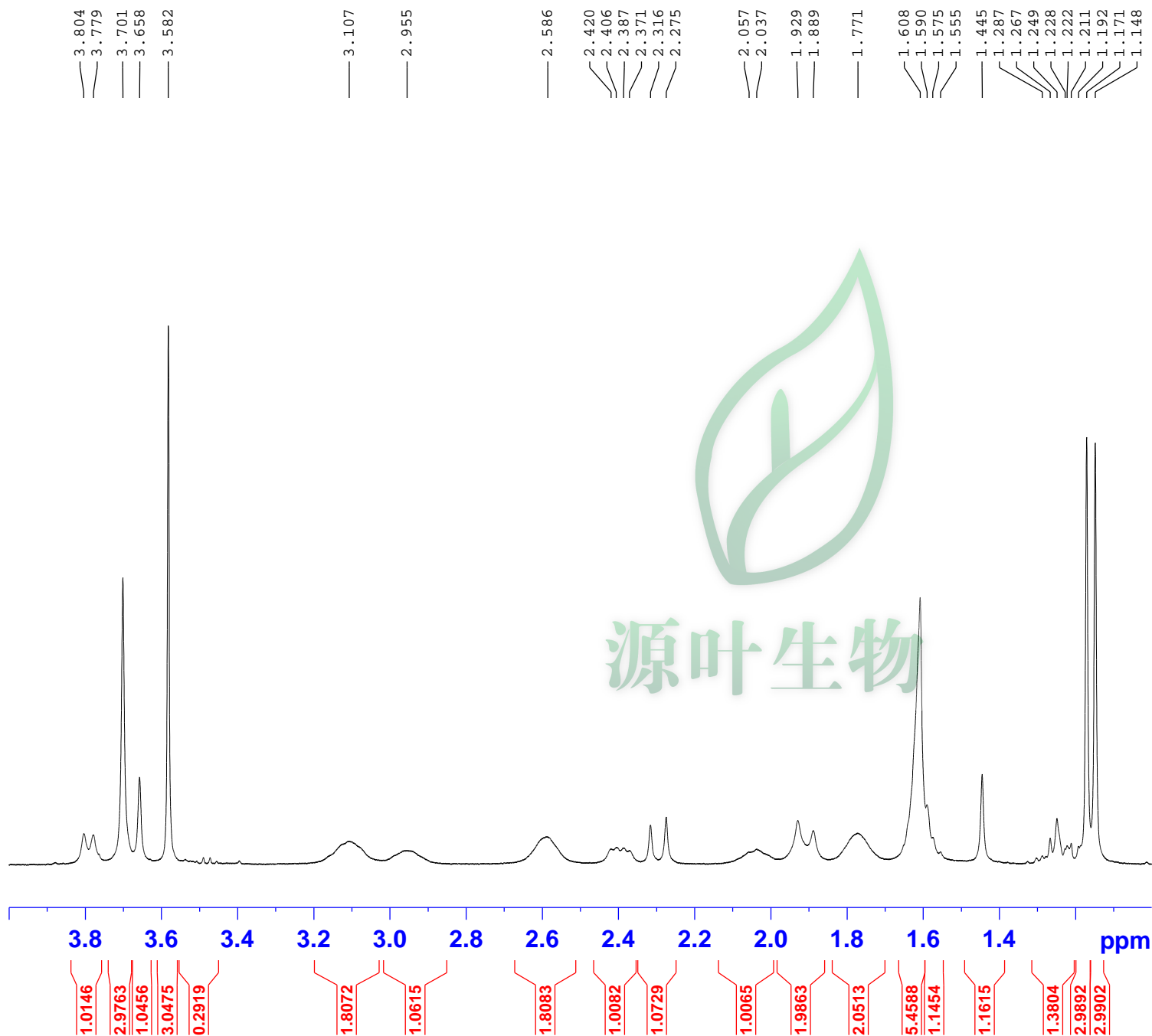
Current Data Parameters
NAME JT-AKTIN-HARRING-TONINE-H1-CDC13-20170210
EXPNO 20
PROCNO 1

F2 - Acquisition Parameters
Date_ 20170210
Time 12.56
INSTRUM spect
PROBHD 5 mm PABBO BB/
PULPROG zg30
TD 65536
SOLVENT CDC13
NS 16
DS 2
SWH 8223.685 Hz
FIDRES 0.125483 Hz
AQ 3.9846387 sec
RG 197.41
DW 60.800 usec
DE 8.00 usec
TE 294.2 K
D1 1.00000000 sec
TD0 1

===== CHANNEL f1 =====
NUC1 1H
P1 12.80 usec
PLW1 15.84899998 W
SFO1 400.1632013 MHz

F2 - Processing parameters
SI 65536
SF 400.1600063 MHz
WDW EM
SSB 0
LB 0.30 Hz
GB 0
PC 1.00





Current Data Parameters
NAME JT-AKTIN-HARRING-TONINE-H1-CDC13-20170210
EXPNO 20
PROCNO 1

F2 - Acquisition Parameters
Date_ 20170210
Time 12.56
INSTRUM spect
PROBHD 5 mm PABBO BB/
PULPROG zg30
TD 65536
SOLVENT CDCl3
NS 16
DS 2
SWH 8223.685 Hz
FIDRES 0.125483 Hz
AQ 3.9846387 sec
RG 197.41
DW 60.800 usec
DE 8.00 usec
TE 294.2 K
D1 1.00000000 sec
TD0 1

===== CHANNEL f1 =====
NUC1 1H
P1 12.80 usec
PLW1 15.84899998 W
SFO1 400.1632013 MHz

F2 - Processing parameters
SI 65536
SF 400.1600063 MHz
WDW EM
SSB 0
LB 0.30 Hz
GB 0
PC 1.00