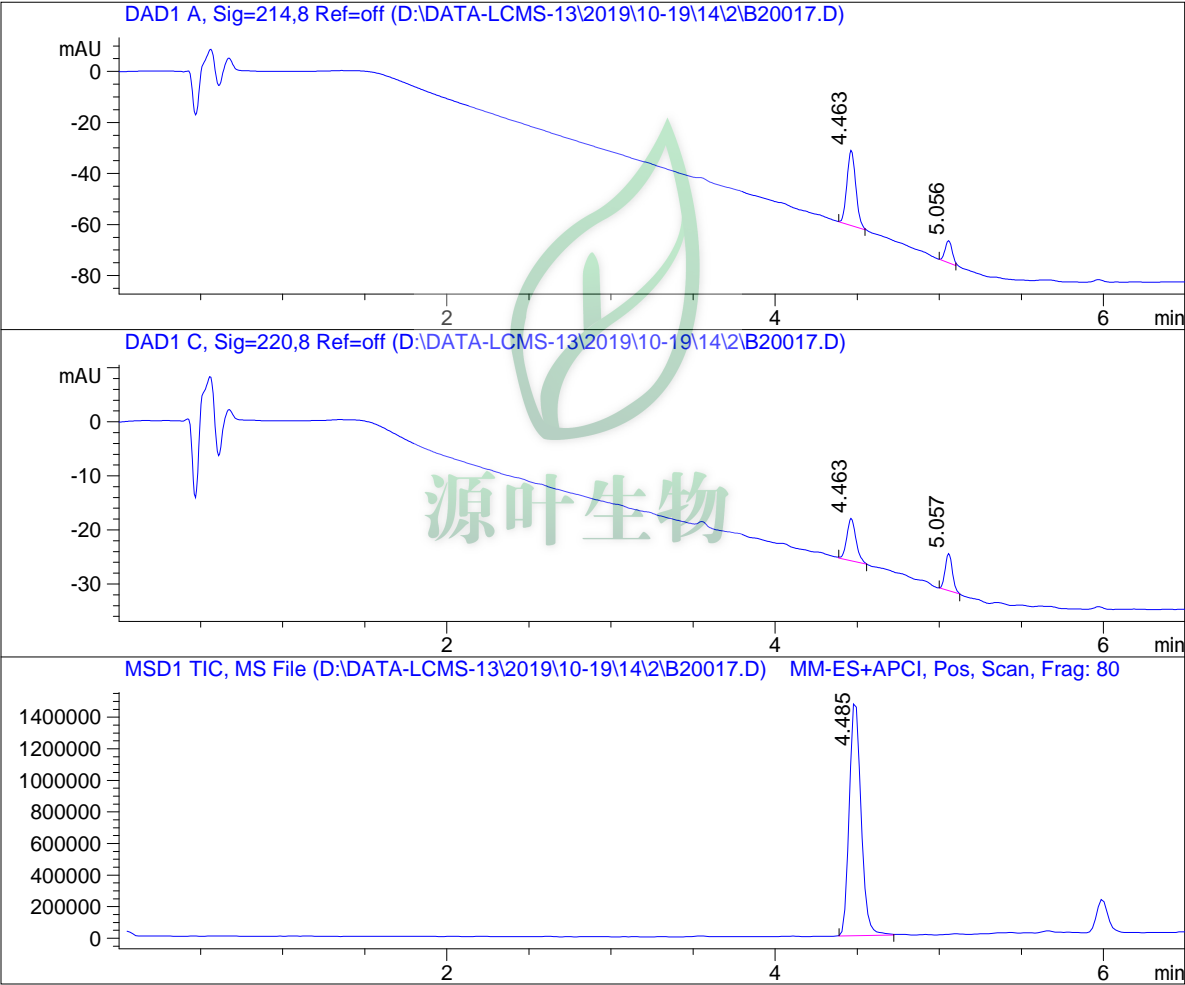


# LC - MS Report

Sample Name : B20017  
Data File : D:\DATA-LCMS-13\2019\10-19\14\2\B20017.D  
Injection Date : Mon, 14. Oct. 2019 Inj. Vol. : 5ul  
Acq Operator : LCMS-13 Location : Vial 56  
Acq. Method : D:\data-lcms-13\2019\10-19\14\2\P-05-95-C2.M  
Method Info. : column:C18;column size:4.6\*50mm ;mobile phase:B(ACN),  
A(0.02%NH4Ac); gradient(B%):as Acq.Method above



=====  
Integration Results  
=====

Signal 1: DAD1 A, Sig=214,8 Ref=off

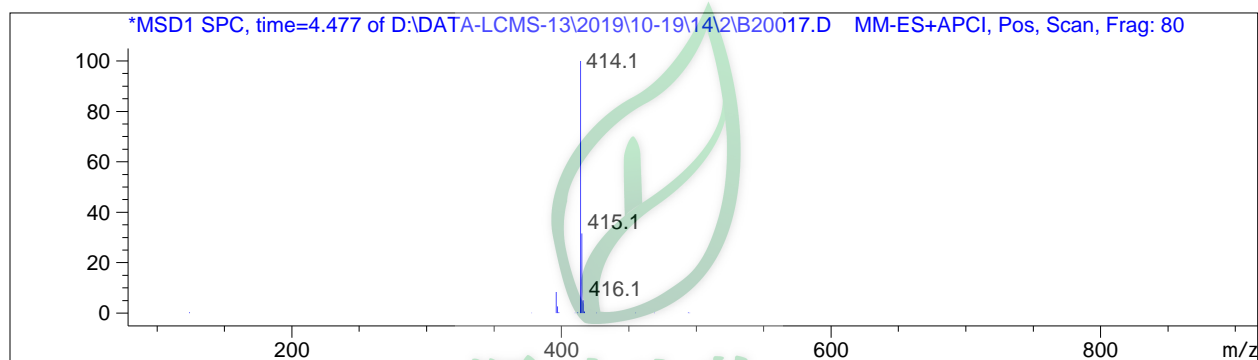
#	R.T.	Type	Height	Height%	Width	Area	Area %
1	4.463	MM	29.440	77.383	0.062	110.254	80.847
2	5.056	MM	8.604	22.617	0.051	26.120	19.153

Signal 2: DAD1 C, Sig=220,8 Ref=off

#	R.T.	Type	Height	Height%	Width	Area	Area %
1	4.463	MM	7.842	53.470	0.065	30.591	59.463
2	5.057	MM	6.824	46.530	0.051	20.854	40.537

Signal 3: MSD1 TIC, MS File

#	R.T.	Type	Height	Height%	Width	Area	Area %
1	4.485	BB	1.510e+006	100.000	0.078	7.410e+006	100.000



\*\*\* End of Report \*\*\*