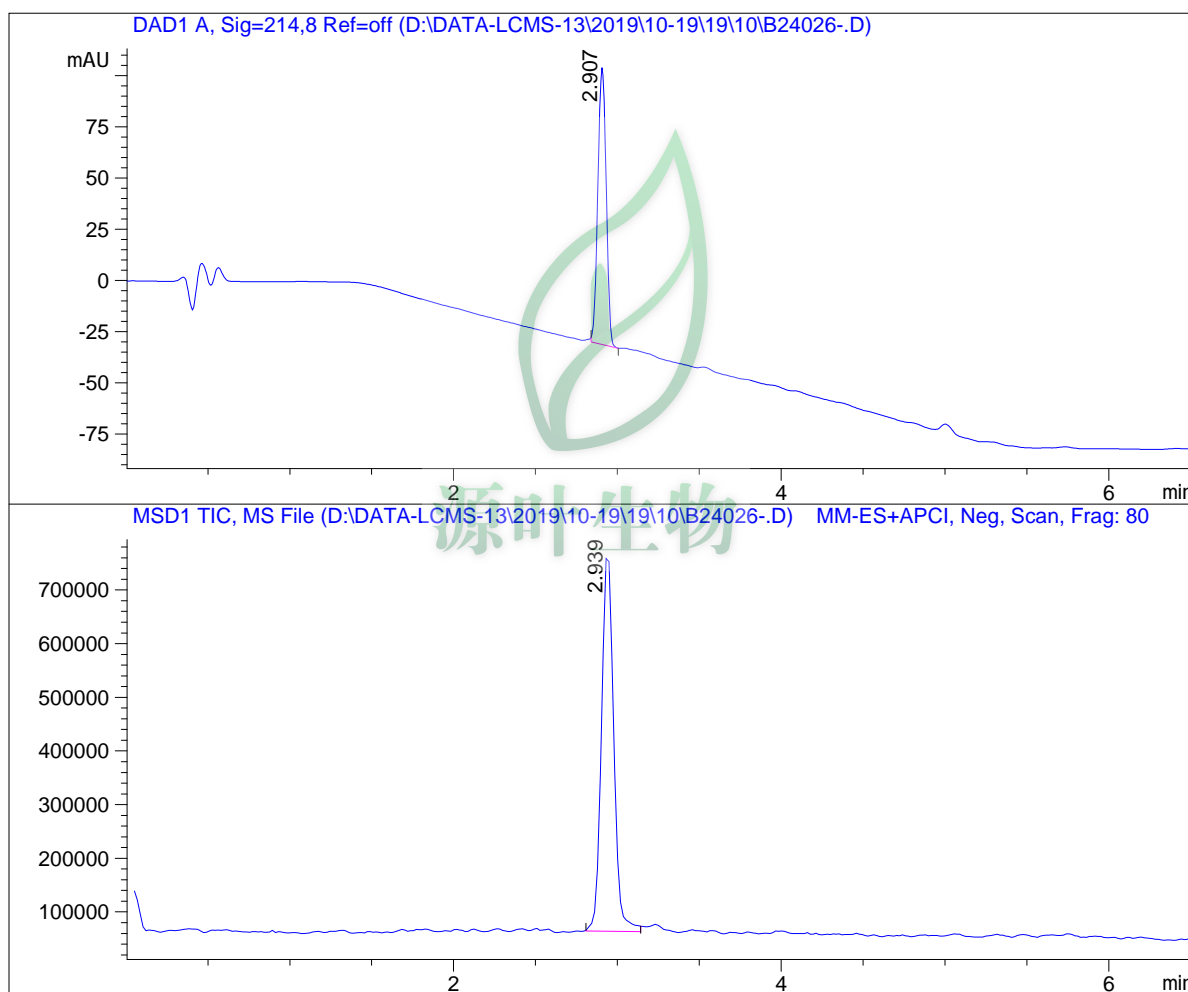


LC - MS Report

Sample Name : B24026
 Data File : D:\DATA-LCMS-13\2019\10-19\19\10\B24026-.D
 Injection Date : Sun, 20. Oct. 2019 Inj. Vol. : 5ul
 Acq Operator : LCMS-13 Location : Vial 13
 Acq. Method : D:\data-lcms-13\2019\10-19\19\10\N-05-95-C2.M
 Method Info. : column:C18;column size:4.6*50mm ;mobile phase:B(ACN),
 A(0.02%NH4Ac); gradient(B%):as Acq.Method above



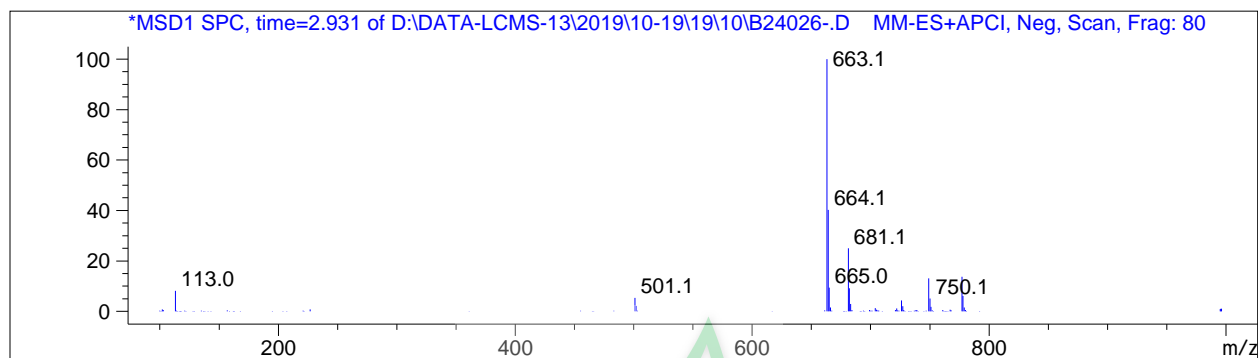
Integration Results

Signal 1: DAD1 A, Sig=214,8 Ref=off

#	R.T.	Type	Height	Height%	Width	Area	Area %
1	2.907	BB	135.230	100.000	0.055	479.419	100.000

Signal 2: MSD1 TIC, MS File

#	R.T.	Type	Height	Height%	Width	Area	Area %
1	2.939	BB	713825.125	100.000	0.081	3.665e+006	100.000



*** End of Report ***



源叶生物