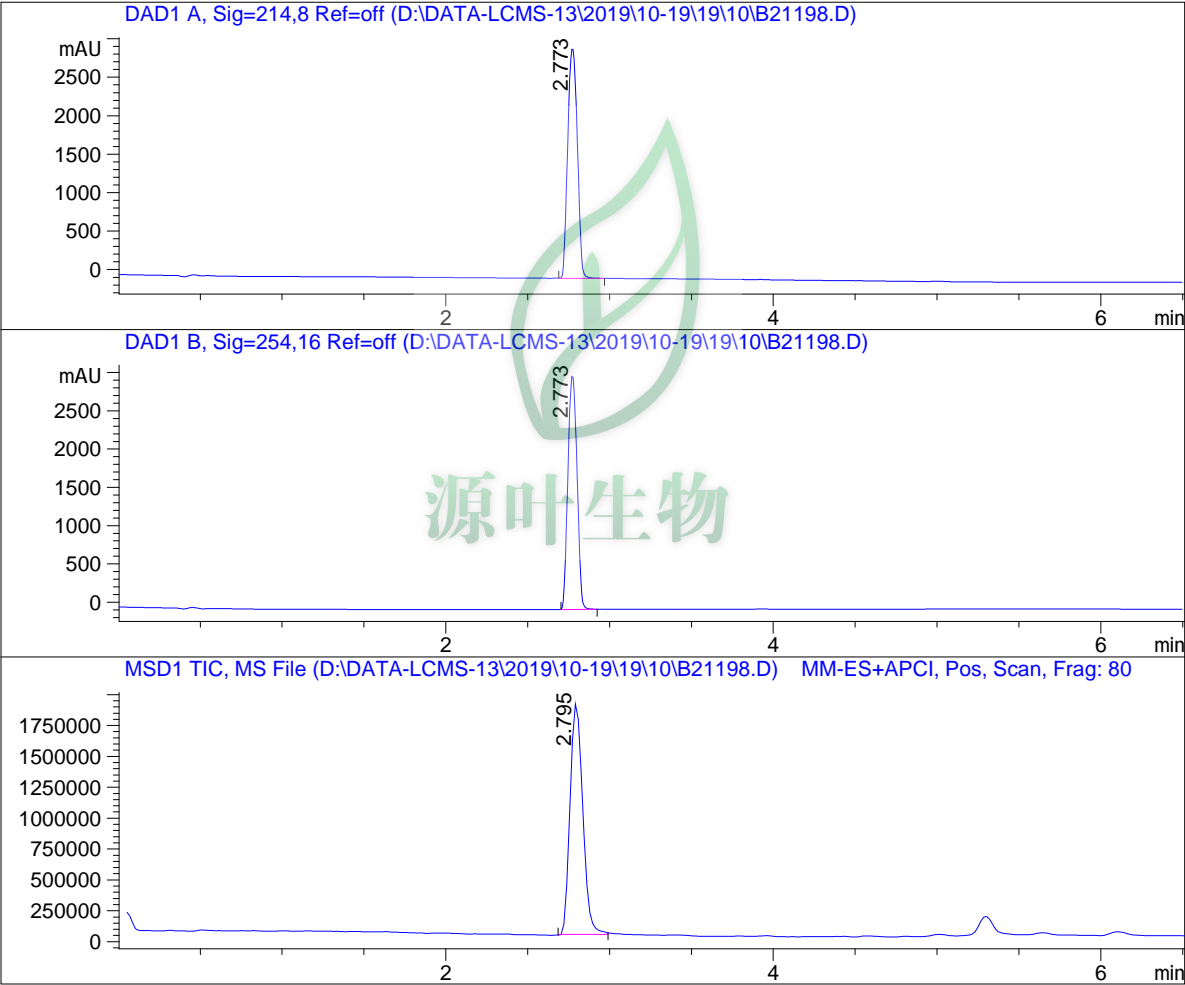


# LC - MS Report

Sample Name : B21198  
Data File : D:\DATA-LCMS-13\2019\10-19\19\10\B21198.D  
Injection Date : Sun, 20. Oct. 2019 Inj. Vol. : 5ul  
Acq Operator : LCMS-13 Location : Vial 11  
Acq. Method : D:\data-lcms-13\2019\10-19\19\10\P-05-95-C2.M  
Method Info. : column:C18;column size:4.6\*50mm ;mobile phase:B(ACN),  
A(0.02%NH4Ac); gradient(B%):as Acq.Method above



=====  
Integration Results  
=====

Signal 1: DAD1 A, Sig=214,8 Ref=off

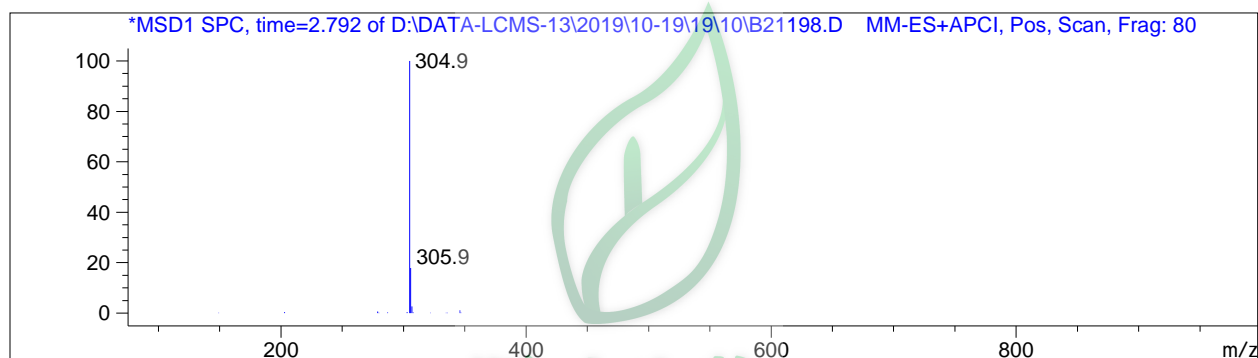
#	R.T.	Type	Height	Height%	Width	Area	Area %
1	2.773	MM	2995.536	100.000	0.068	12199.441	100.000

Signal 2: DAD1 B, Sig=254,16 Ref=off

#	R.T.	Type	Height	Height%	Width	Area	Area %
1	2.773	BB	3056.345	100.000	0.065	11854.692	100.000

Signal 3: MSD1 TIC, MS File

#	R.T.	Type	Height	Height%	Width	Area	Area %
1	2.795	MM	1.890e+006	100.000	0.089	1.010e+007	100.000



\*\*\* End of Report \*\*\*