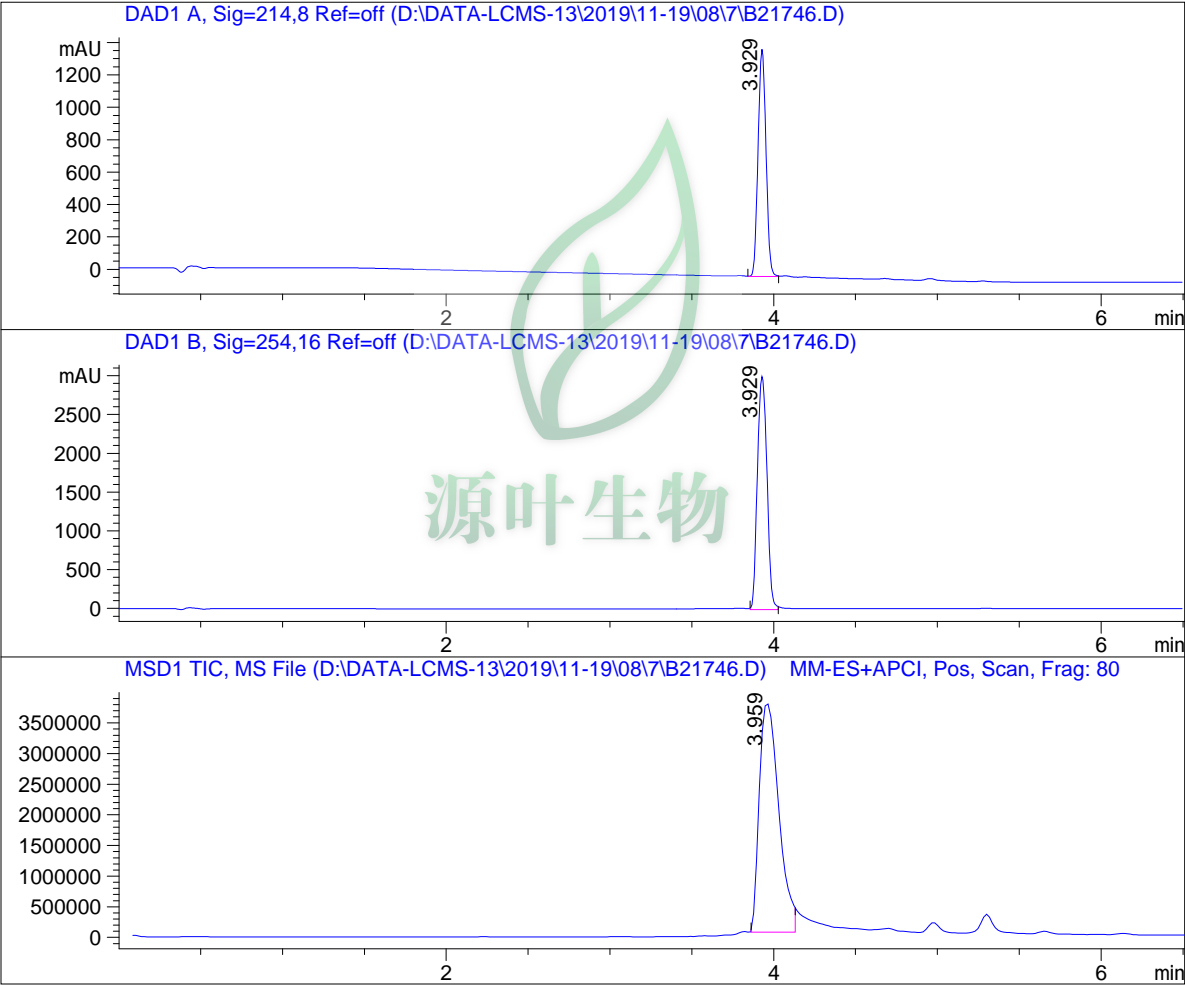


# LC - MS Report

Sample Name : B21746  
Data File : D:\DATA-LCMS-13\2019\11-19\08\7\B21746.D  
Injection Date : Sat, 9. Nov. 2019 Inj. Vol. : 10ul  
Acq Operator : LCMS-13 Location : Vial 31  
Acq. Method : D:\data-lcms-13\2019\11-19\08\7\P-05-95-C2.M  
Method Info. : column:C18;column size:4.6\*50mm ;mobile phase:B(ACN),  
A(0.02%NH4Ac); gradient(B%):as Acq.Method above



=====  
Integration Results  
=====

Signal 1: DAD1 A, Sig=214,8 Ref=off

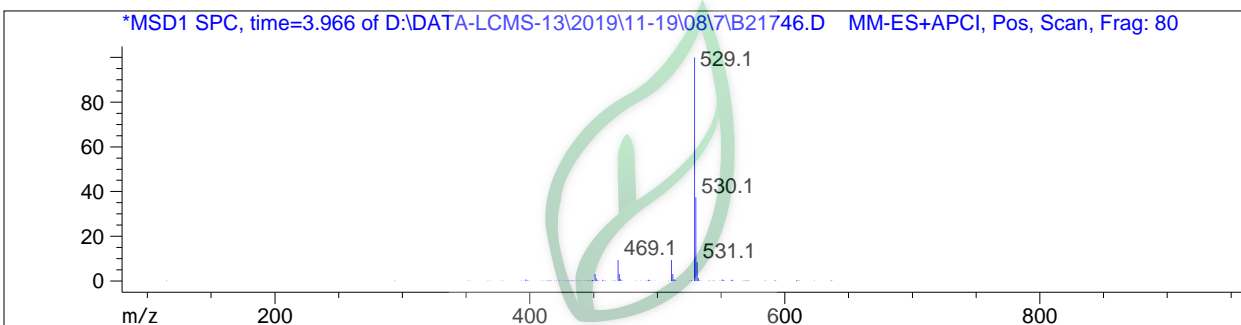
#	R.T.	Type	Height	Height%	Width	Area	Area %
1	3.929	MM	1409.728	100.000	0.056	4730.395	100.000

Signal 2: DAD1 B, Sig=254,16 Ref=off

#	R.T.	Type	Height	Height%	Width	Area	Area %
1	3.929 MM		3012.477	100.000	0.068	12221.587	100.000

Signal 3: MSD1 TIC, MS File

#	R.T.	Type	Height	Height%	Width	Area	Area %
1	3.959 MM		3.751e+006	100.000	0.137	3.094e+007	100.000



\*\*\* End of Report \*\*\*