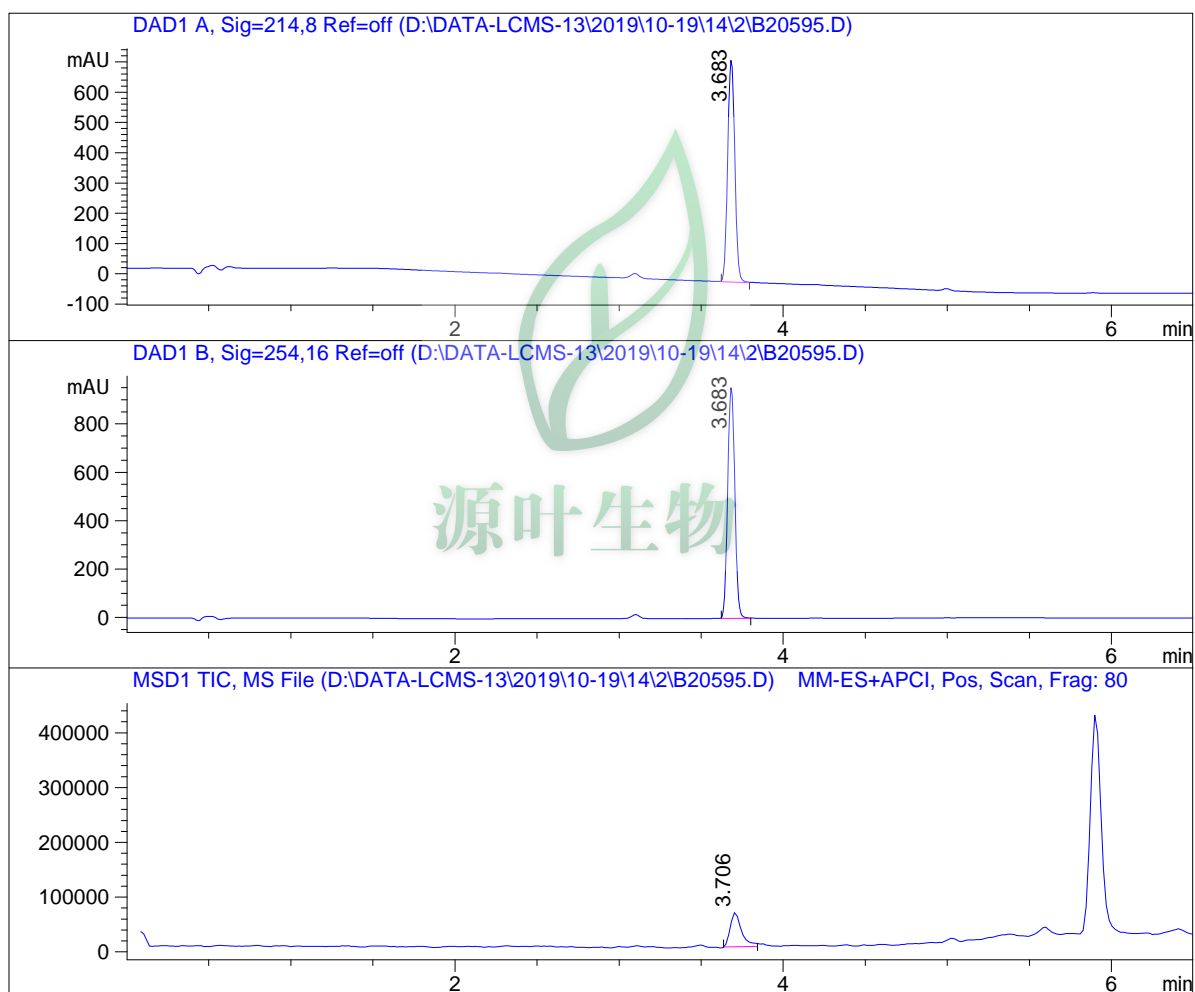


LC - MS Report

Sample Name : B20595
Data File : D:\DATA-LCMS-13\2019\10-19\14\2\B20595.D
Injection Date : Mon, 14. Oct. 2019 Inj. Vol. : 5ul
Acq Operator : LCMS-13 Location : Vial 57
Acq. Method : D:\data-lcms-13\2019\10-19\14\2\P-05-95-C2.M
Method Info. : column:C18;column size:4.6*50mm ;mobile phase:B(ACN),
A(0.02%NH4Ac); gradient(B%):as Acq.Method above



Integration Results

Signal 1: DAD1 A, Sig=214,8 Ref=off

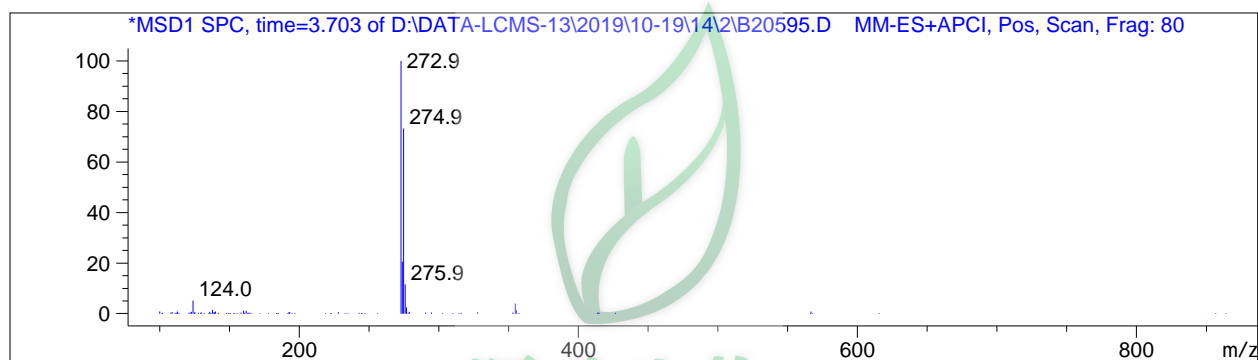
#	R.T.	Type	Height	Height%	Width	Area	Area %
1	3.683	BB	733.181	100.000	0.049	2207.611	100.000

Signal 2: DAD1 B, Sig=254,16 Ref=off

#	R.T.	Type	Height	Height%	Width	Area	Area %
1	3.683	BB	955.805	100.000	0.049	2881.020	100.000

Signal 3: MSD1 TIC, MS File

#	R.T.	Type	Height	Height%	Width	Area	Area %
1	3.706	BB	62820.453	100.000	0.072	300017.500	100.000



*** End of Report ***