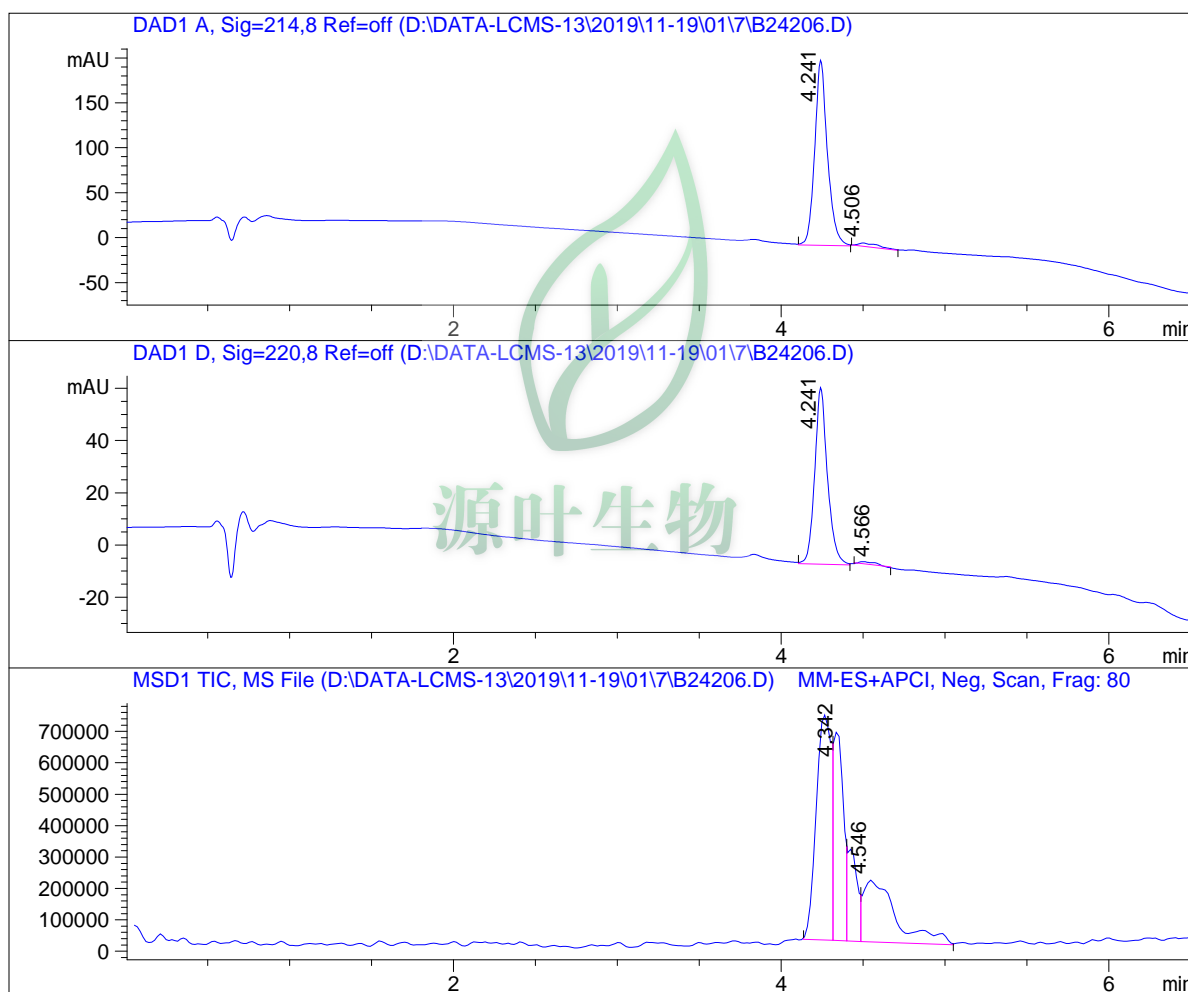


LC - MS Report

Sample Name : B24206
Data File : D:\DATA-LCMS-13\2019\11-19\01\7\B24206.D
Injection Date : Sat, 2. Nov. 2019 Inj. Vol. : 10ul
Acq Operator : LCMS-13 Location : Vial 62
Acq. Method : D:\data-lcms-13\2019\11-19\01\7\N-02-40.M
Method Info. : column:C18;column size:4.6*50mm ;mobile phase:B(ACN),
A(0.02%NH4Ac); gradient(B%):as Acq.Method above



Integration Results

Signal 1: DAD1 A, Sig=214,8 Ref=off

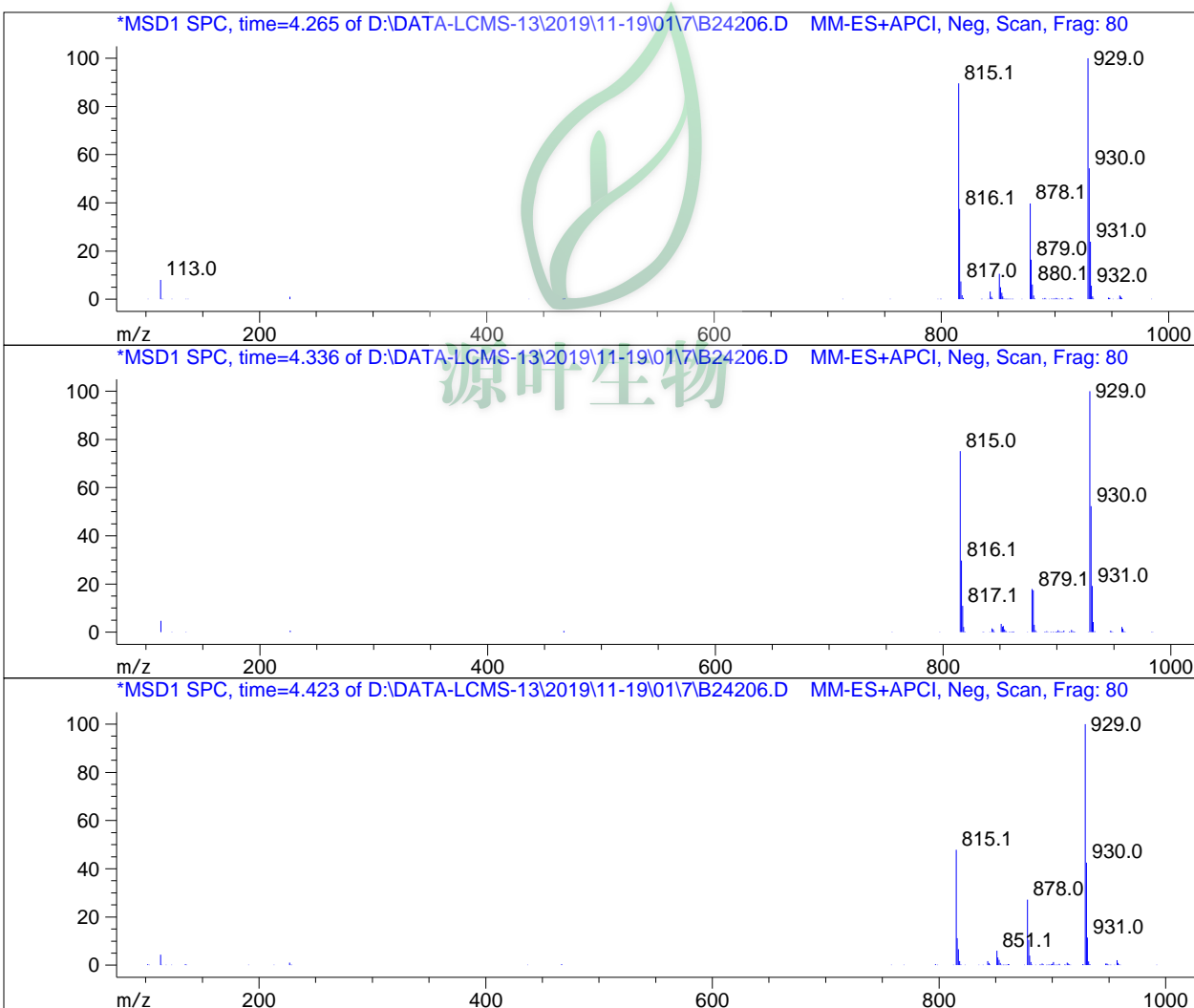
#	R.T.	Type	Height	Height%	Width	Area	Area %
1	4.241	MM	206.708	98.225	0.090	1114.592	96.882
2	4.506	MM	3.736	1.775	0.160	35.869	3.118

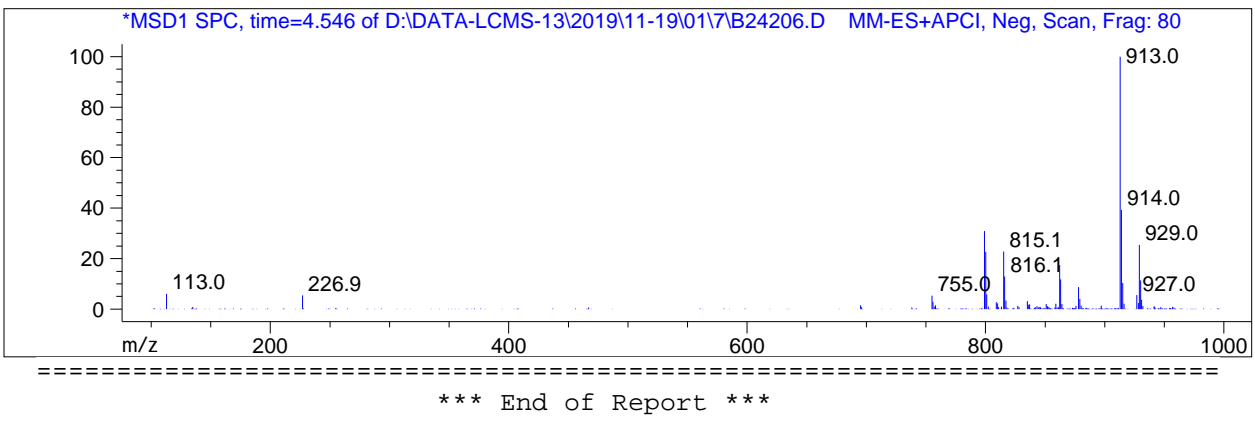
Signal 2: DAD1 D, Sig=220,8 Ref=off

#	R.T.	Type	Height	Height%	Width	Area	Area %
1	4.241	MM	67.824	98.671	0.090	366.511	98.392
2	4.566	MM	0.914	1.329	0.109	5.991	1.608

Signal 3: MSD1 TIC, MS File

#	R.T.	Type	Height	Height%	Width	Area	Area %
1	4.264	MF	719264.875	38.189	0.113	4.878e+006	43.112
2	4.342	MF	675438.375	35.862	0.067	2.601e+006	22.984
3	4.423	FM	292214.969	15.515	0.066	1.153e+006	10.187
4	4.546	FM	196538.297	10.435	0.228	2.683e+006	23.716





源叶生物