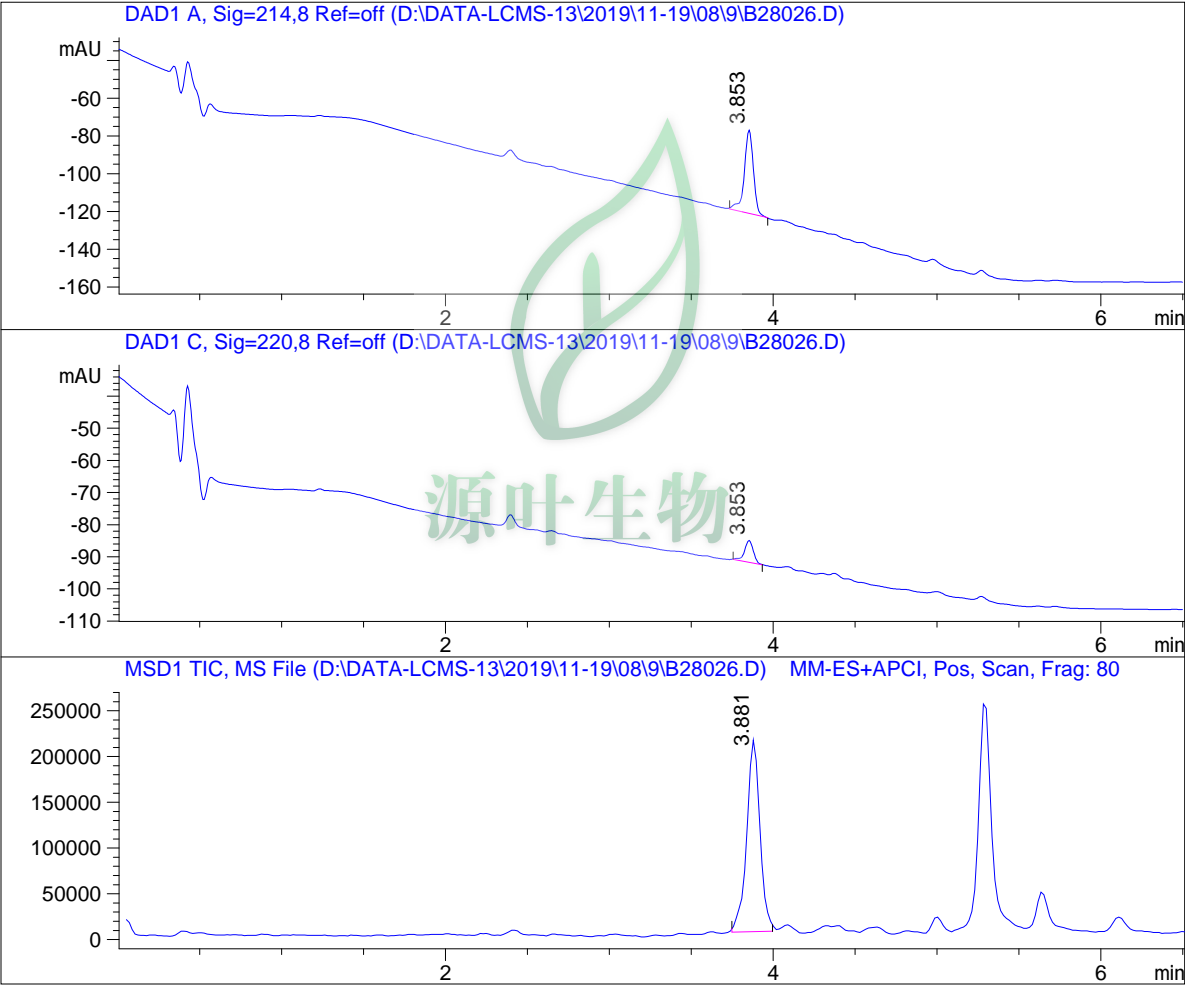


LC - MS Report

Sample Name : B28026
Data File : D:\DATA-LCMS-13\2019\11-19\08\9\B28026.D
Injection Date : Sat, 9. Nov. 2019 Inj. Vol. : 10ul
Acq Operator : LCMS-13 Location : Vial 35
Acq. Method : D:\data-lcms-13\2019\11-19\08\9\P-05-95-C2.M
Method Info. : column:C18;column size:4.6*50mm ;mobile phase:B(ACN),
A(0.02%NH4Ac); gradient(B%):as Acq.Method above



=====
Integration Results
=====

Signal 1: DAD1 A, Sig=214,8 Ref=off

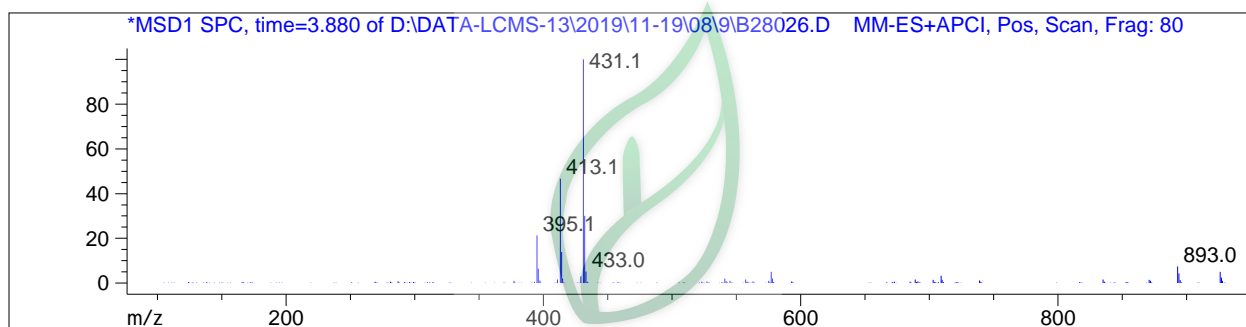
#	R.T.	Type	Height	Height%	Width	Area	Area %
1	3.853	MM	44.104	100.000	0.065	170.998	100.000

Signal 2: DAD1 C, Sig=220,8 Ref=off

#	R.T.	Type	Height	Height%	Width	Area	Area %
1	3.853	MM	6.772	100.000	0.062	25.294	100.000

Signal 3: MSD1 TIC, MS File

#	R.T.	Type	Height	Height%	Width	Area	Area %
1	3.881	MM	211306.328	100.000	0.093	1.180e+006	100.000



=====
*** End of Report ***