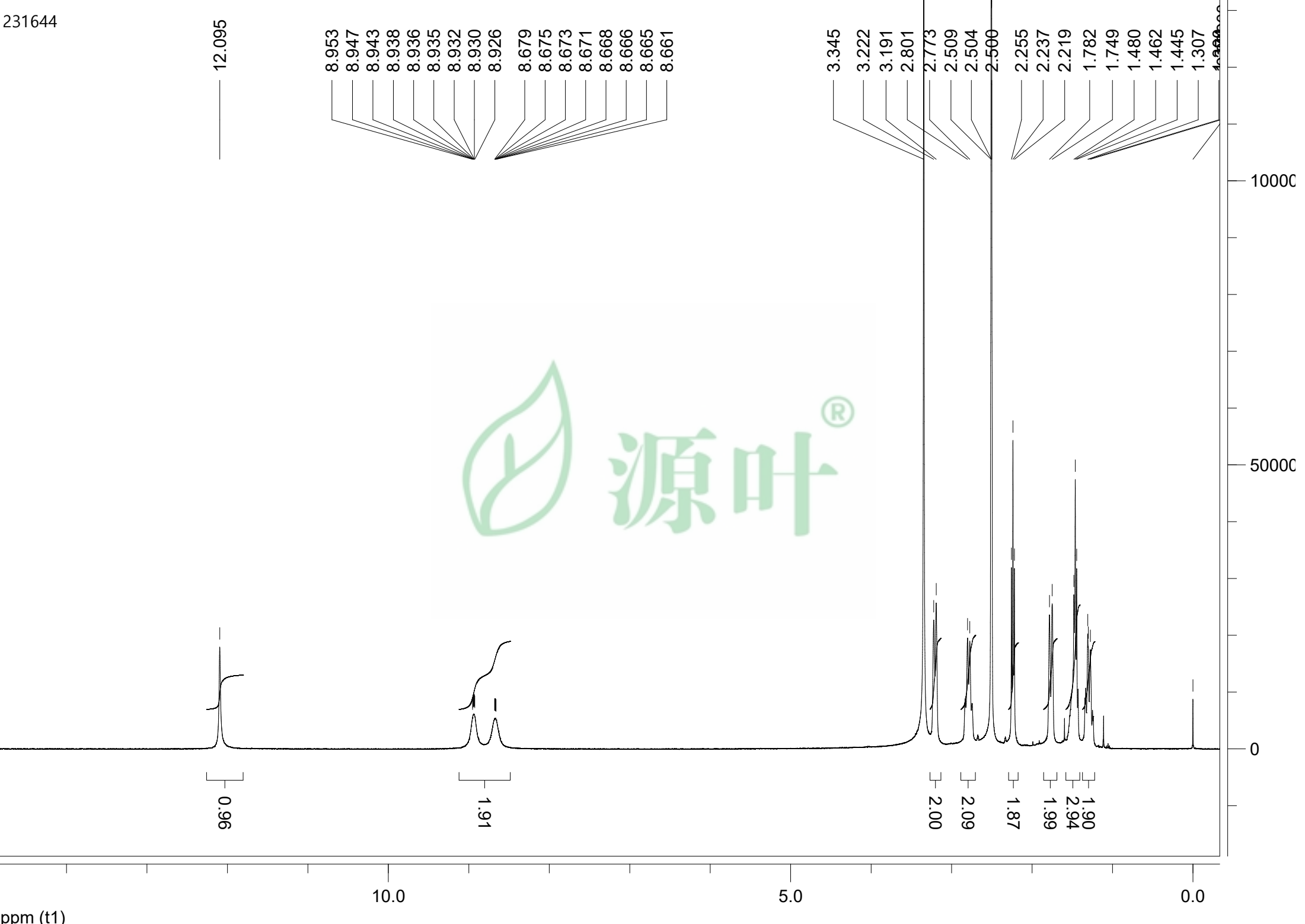


231644



12.095

8.953
8.947
8.943
8.938
8.936
8.935
8.932
8.930
8.926
8.679
8.675
8.673
8.671
8.668
8.666
8.665
8.661

3.345
3.222
3.191
2.801
2.773
2.509
2.504
2.500
2.255
2.237
2.219
1.782
1.749
1.480
1.462
1.445
1.307
1.280
1.260

0.96

1.91

2.00
2.09
1.87
1.99
2.90

ppm (t1)

10.0

5.0

0.0

10000

5000

0