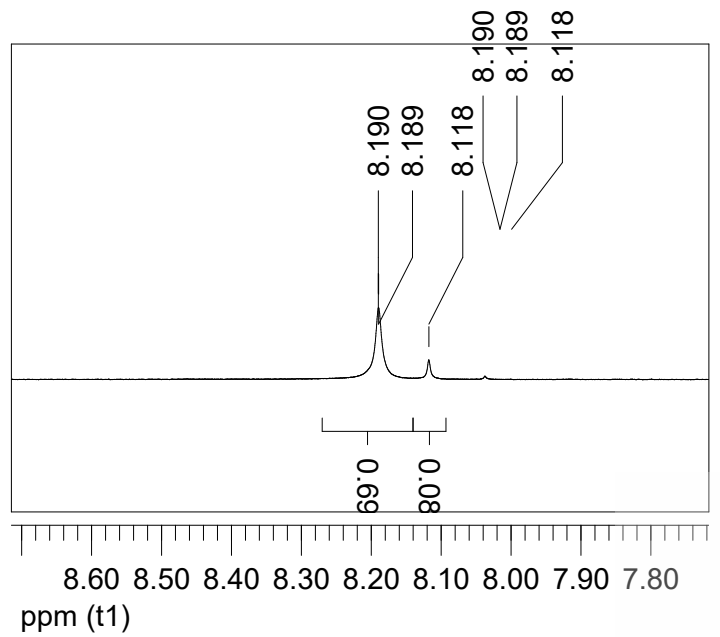


221547



- 5.835
- 5.821
- 4.778
- 4.701
- 4.656
- 4.642
- 4.629
- 4.438
- 4.428
- 4.416
- 4.244
- 4.140
- 4.129
- 4.122
- 3.221

ppm (t1)

10.0

5.0

0.0

69.0

68.0

62.1

80.1

88.1

5000C

4000C

3000C

2000C

1000C

0