

249075

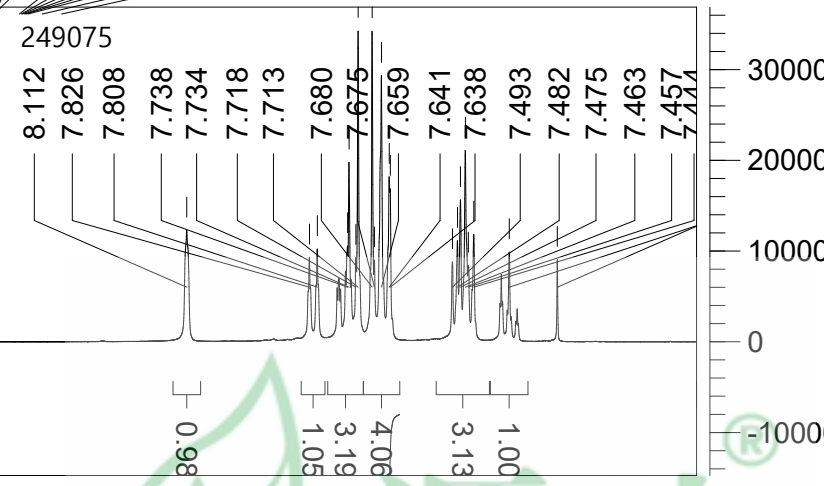
ppm (t1)

10.0

5.0

0.0

8.112  
7.826  
7.808  
7.738  
7.734  
7.718  
7.713  
7.680  
7.675  
7.659  
7.641  
7.638  
7.493  
7.482  
7.475  
7.463  
7.457  
7.444  
7.361  
7.249



ppm (t1)

86.0  
80.1  
80.0  
86.0

1.586  
1.375

12.42

0.008

10000

50000

0