

249077
249077

ppm (t1)

10.0

5.0

0.0

7.712
7.693
7.604
7.584
7.497
7.492
7.461
7.457
7.441
7.437
7.362
7.346
7.343
7.331
7.328
7.313
7.280
7.277
7.262
7.259
7.248
7.060
7.045
7.039
7.033

2.285

1.545

-0.008

10000

50000

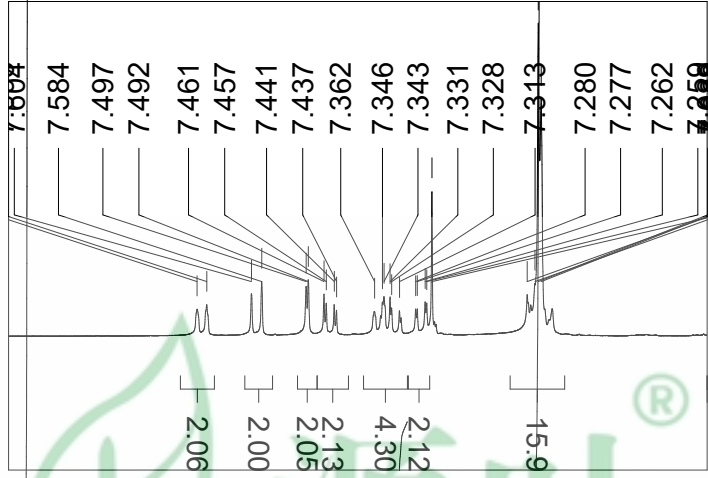
0

15.94
2.13
2.06
2.06
2.06
2.06

8.00
ppm (t1)

7.50

7.00



20000

10000

0

-10000

12.18