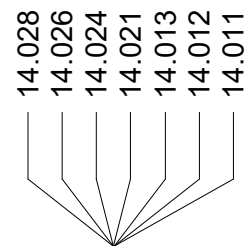


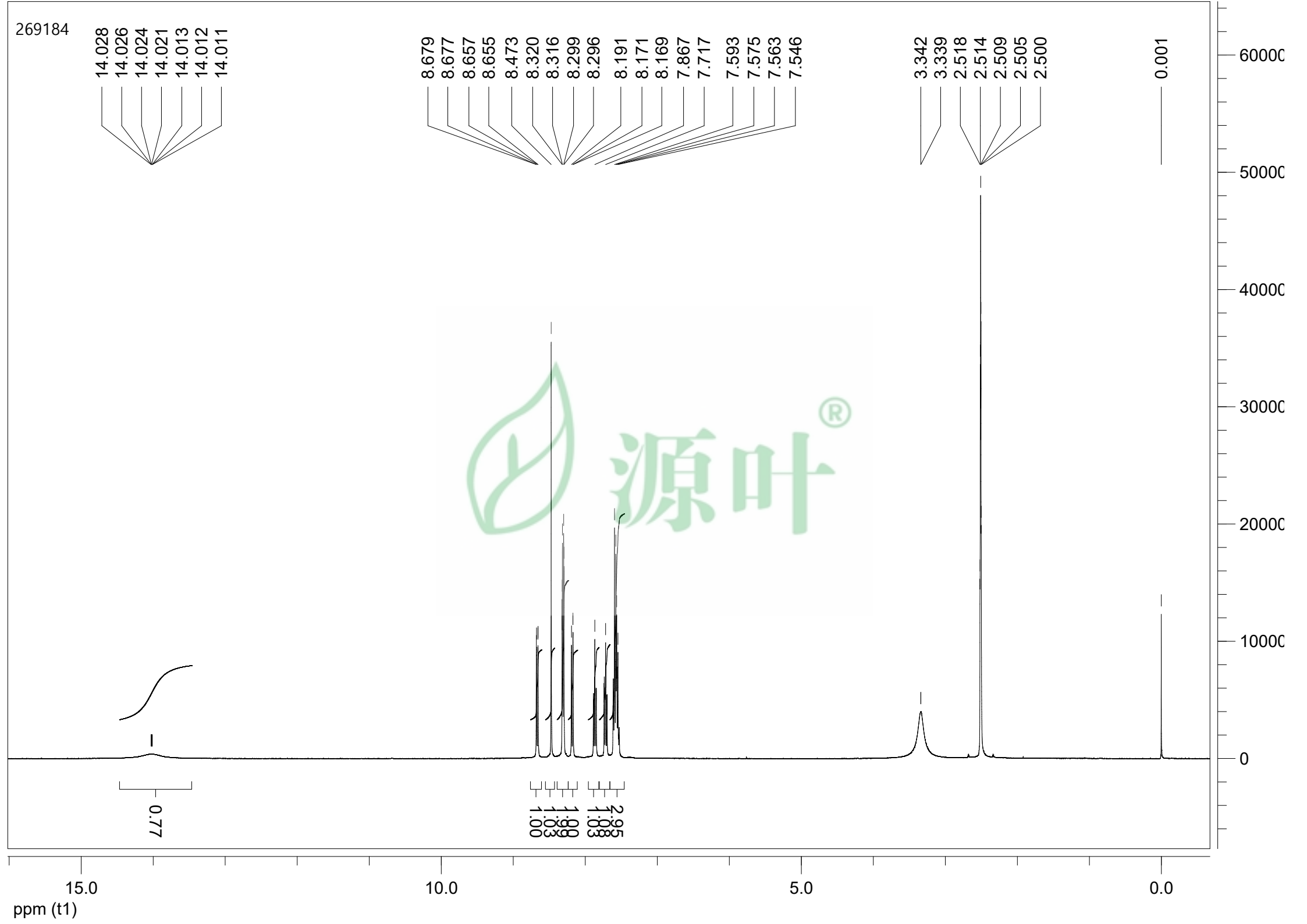
269184



8.679
8.677
8.657
8.655
8.473
8.320
8.316
8.299
8.296
8.191
8.171
8.169
7.867
7.717
7.593
7.575
7.563
7.546

3.342
3.339
2.518
2.514
2.509
2.505
2.500

0.001



0.77

15.0
ppm (t1)

10.0

5.0

0.0