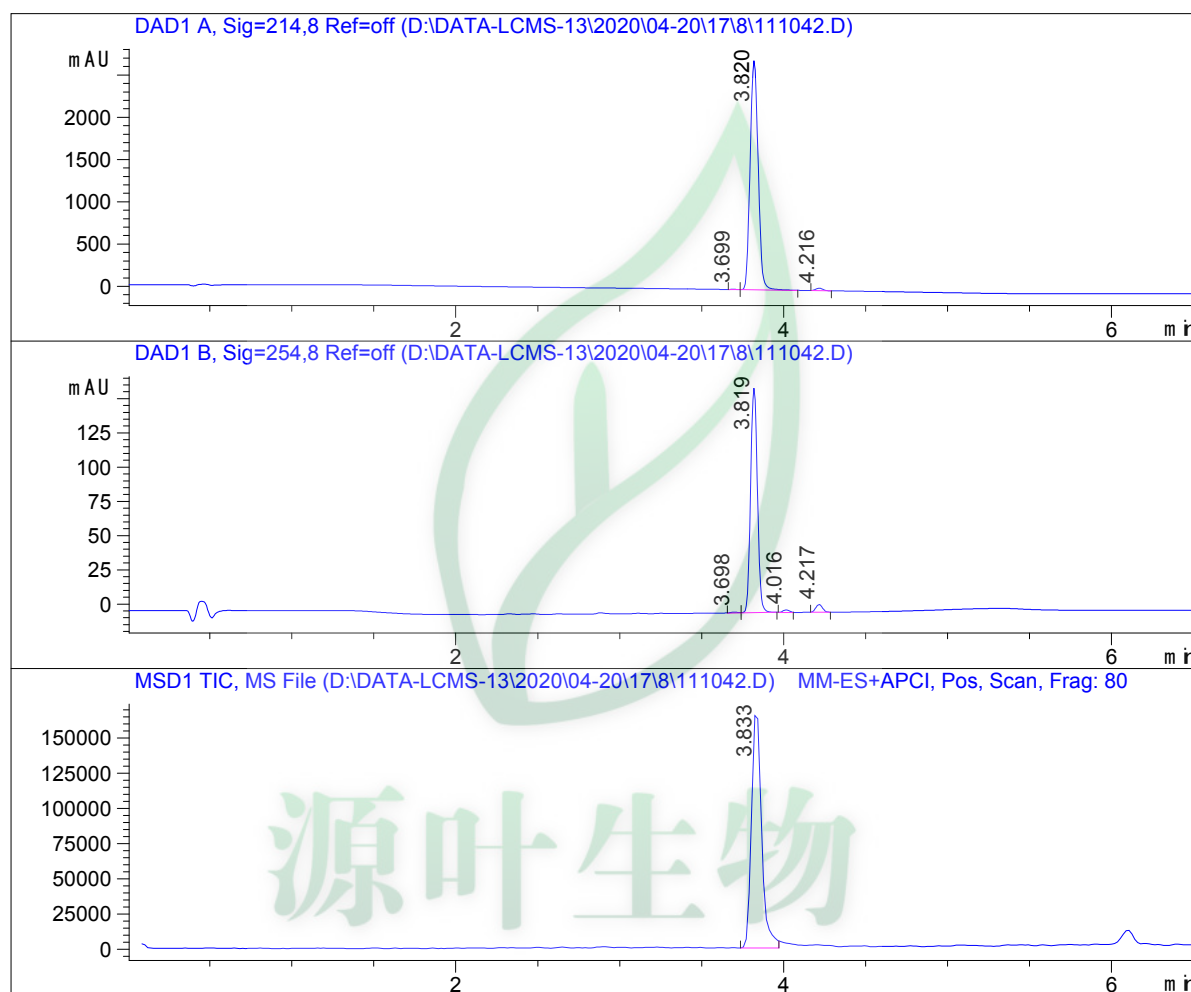


LCMS Report

Sample Name : 111042
Data File : D:\DATA-LCMS-13\2020\04-20\17\8\111042.D
Injection Date : Sun, 19. Apr. 2020 Inj. Vol. : 3ul
Acq Operator : LCMS-13 Location : Vial 76
Acq. Method : D:\data-lcms-13\2020\04-20\17\8\P-05-95.M
Method Info. : column:Xbridge C18 5um 4.6*30mm ;mobile phase:B (ACN),
A(0.02%NH4Ac); gradient(B%):as Acq.Method above



Integration Results

Signal 1: DAD1 A, Sig=214,8 Ref=off

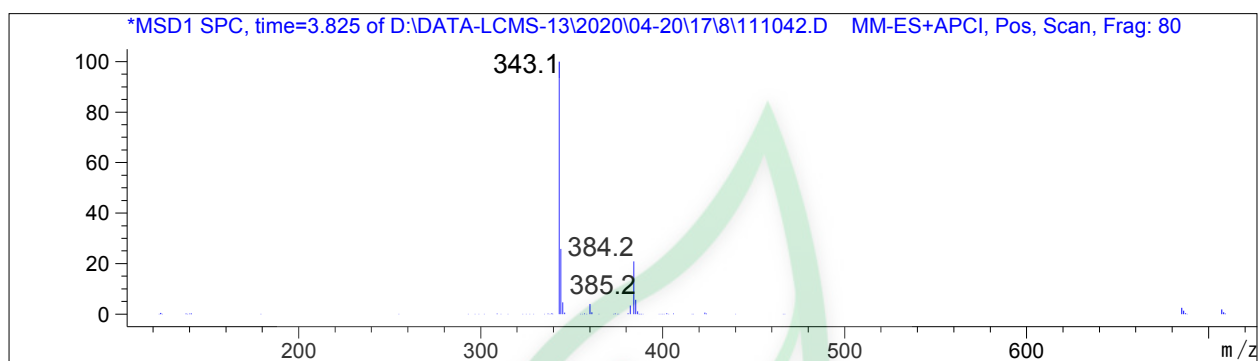
#	R.T.	Type	Height	Height%	Width	Area	Area %
1	3.699	FM	3.197	0.116	0.050	9.537	0.101
2	3.820	VB	2711.498	98.780	0.054	9299.532	98.918
3	4.216	MF	30.278	1.103	0.051	92.144	0.980

Signal 2: DAD1 B, Sig=254,8 Ref=off

#	R.T.	Type	Height	Height%	Width	Area	Area %
1	3.698	MF	0.674	0.390	0.054	2.189	0.437
2	3.819	FM	164.720	95.272	0.048	477.433	95.224
3	4.016	MM	1.819	1.052	0.047	5.124	1.022
4	4.217	MF	5.682	3.286	0.049	16.635	3.318

Signal 3: MSD1 TIC, MS File

#	R.T.	Type	Height	Height%	Width	Area	Area %
1	3.833	MM	174332.188	100.000	0.069	725105.313	100.000



*** End of Report ***

源叶生物