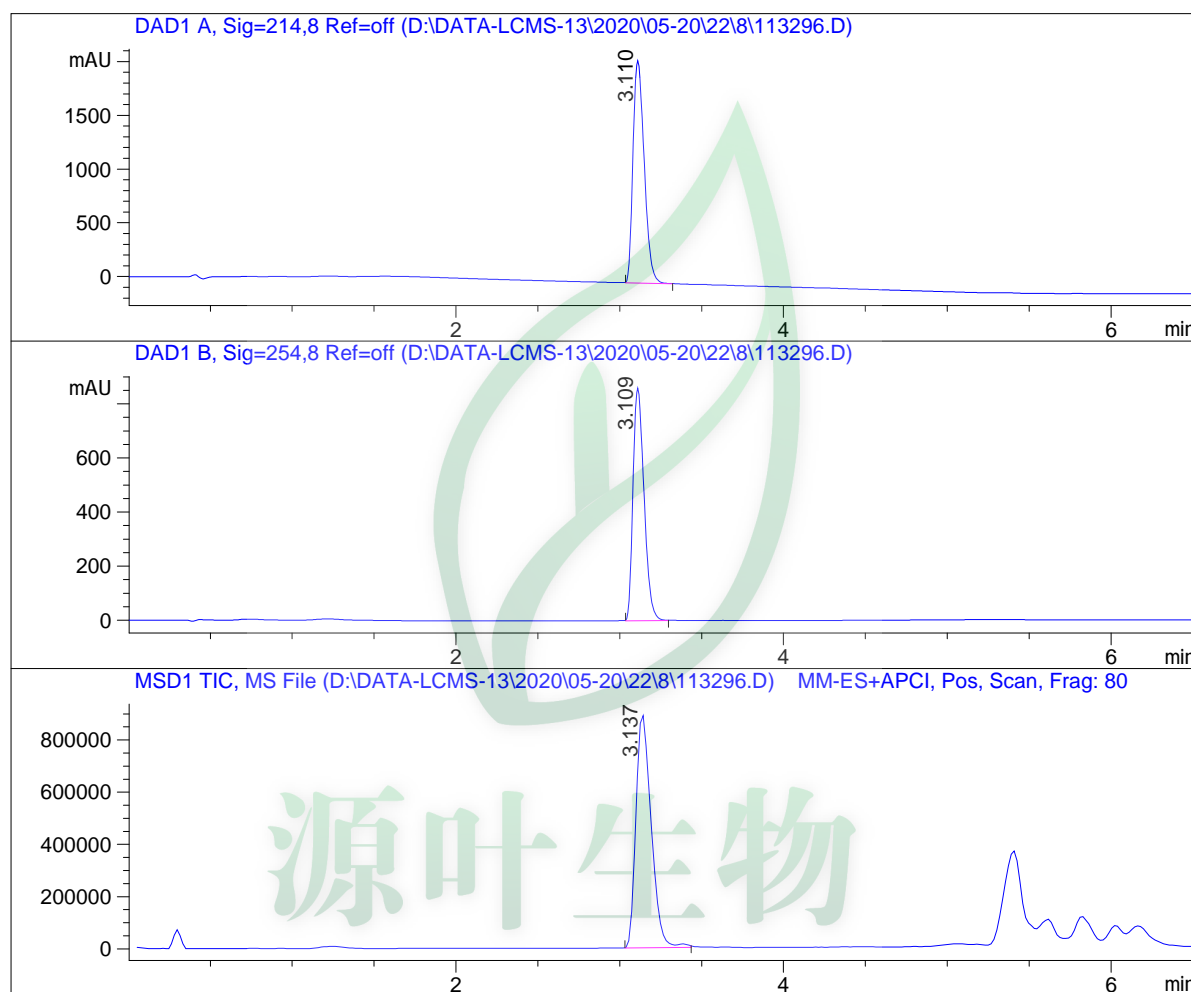


LCMS Report

Sample Name : 113296
Data File : D:\DATA-LCMS-13\2020\05-20\22\8\113296.D
Injection Date : Sat, 23. May. 2020 Inj. Vol. : 3ul
Acq Operator : LCMS-13 Location : Vial 81
Acq. Method : D:\data-lcms-13\2020\05-20\22\8\P-05-95-TFA.M
Method Info. : column:Xbridge C18 5um 4.6*50mm ;mobile phase:B(ACN),
A(0.05%TFA); gradient(B%):as Acq.Method above



Integration Results

Signal 1: DAD1 A, Sig=214,8 Ref=off

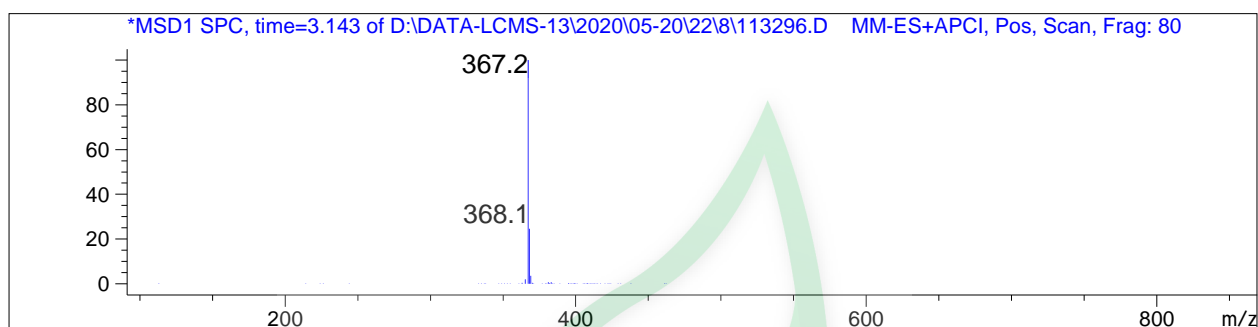
#	R.T.	Type	Height	Height%	Width	Area	Area %
1	3.110	BB	2069.187	100.000	0.075	9842.532	100.000

Signal 2: DAD1 B, Sig=254,8 Ref=off

#	R.T.	Type	Height	Height%	Width	Area	Area %
1	3.109	BB	860.176	100.000	0.073	4020.618	100.000

Signal 3: MSD1 TIC, MS File

#	R.T.	Type	Height	Height%	Width	Area	Area %
1	3.137	MF	902325.625	100.000	0.107	5.789e+006	100.000



*** End of Report ***

源叶生物