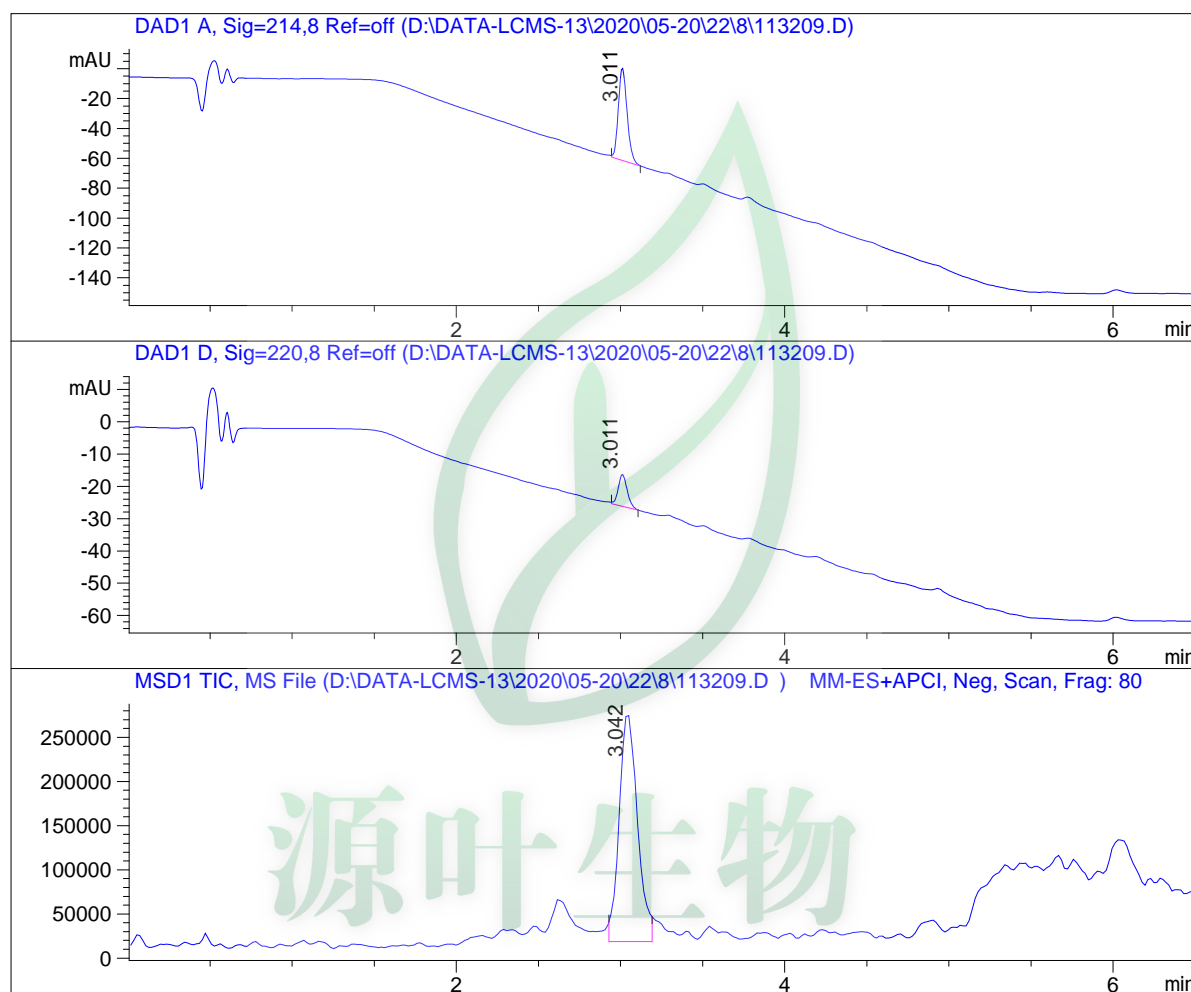


LCMS Report

Sample Name : 113209
Data File : D:\DATA-LCMS-13\2020\05-20\22\8\113209.D
Injection Date : Sun, 24. May. 2020 Inj. Vol. : 10ul
Acq Operator : LCMS-13 Location : Vial 82
Acq. Method : D:\data-lcms-13\2020\05-20\22\8\N-05-95-100-1500.M
Method Info. : column:Ecclipse XDB-C18 5um 4.6*150mm ;mobile phase:B(ACN), A(0.02%NH4AC); gradient(B%):as Acq.Method above



Integration Results

Signal 1: DAD1 A, Sig=214,8 Ref=off

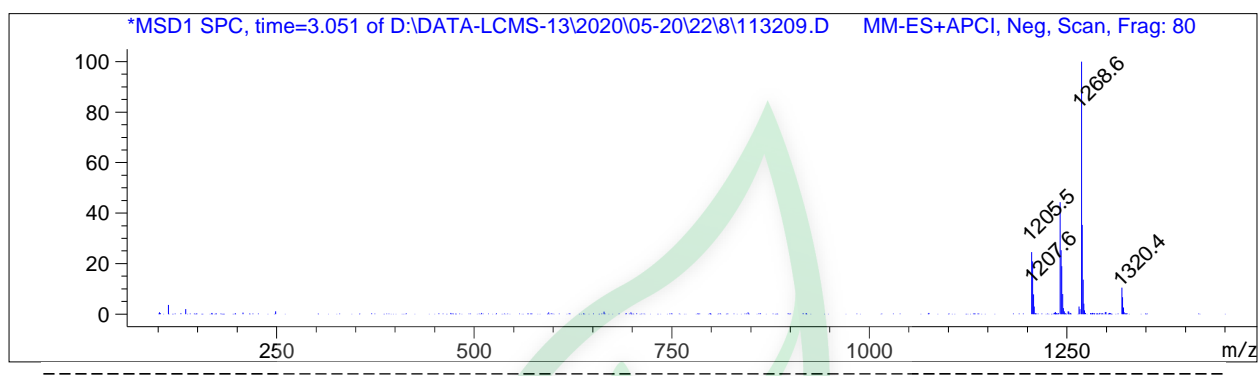
#	R.T.	Type	Height	Height%	Width	Area	Area %
1	3.011	BB	61.819	100.000	0.057	228.483	100.000

Signal 2: DAD1 D, Sig=220,8 Ref=off

#	R.T.	Type	Height	Height%	Width	Area	Area %
1	3.011	BB	9.812	100.000	0.058	37.268	100.000

Signal 3: MSD1 TIC, MS File

#	R.T.	Type	Height	Height%	Width	Area	Area %
1	3.042	MM	261199.031	100.000	0.127	1.996e+006	100.000



*** End of Report ***

源叶生物