

9.798
9.387
7.459
7.438
7.244
7.203
6.962
6.921
6.640
6.636
6.577
6.572
6.548
6.542
6.536
6.515
6.345
6.339
6.334
5.275
5.262
5.247
5.234
5.049
5.036
5.024
4.982
4.968
4.955
4.799
4.780
4.554
4.539
4.533
4.525
4.518
4.504
3.687
3.517
3.502
3.487
3.292
3.286
3.274
3.261
3.254
3.242
3.230
3.218
3.212
3.199
3.189
3.176



Current Data Parameters

NAME Mulberroside A-1H NMR DMSO
EXPNO 1
PROCNO 1

F2 - Acquisition Parameters

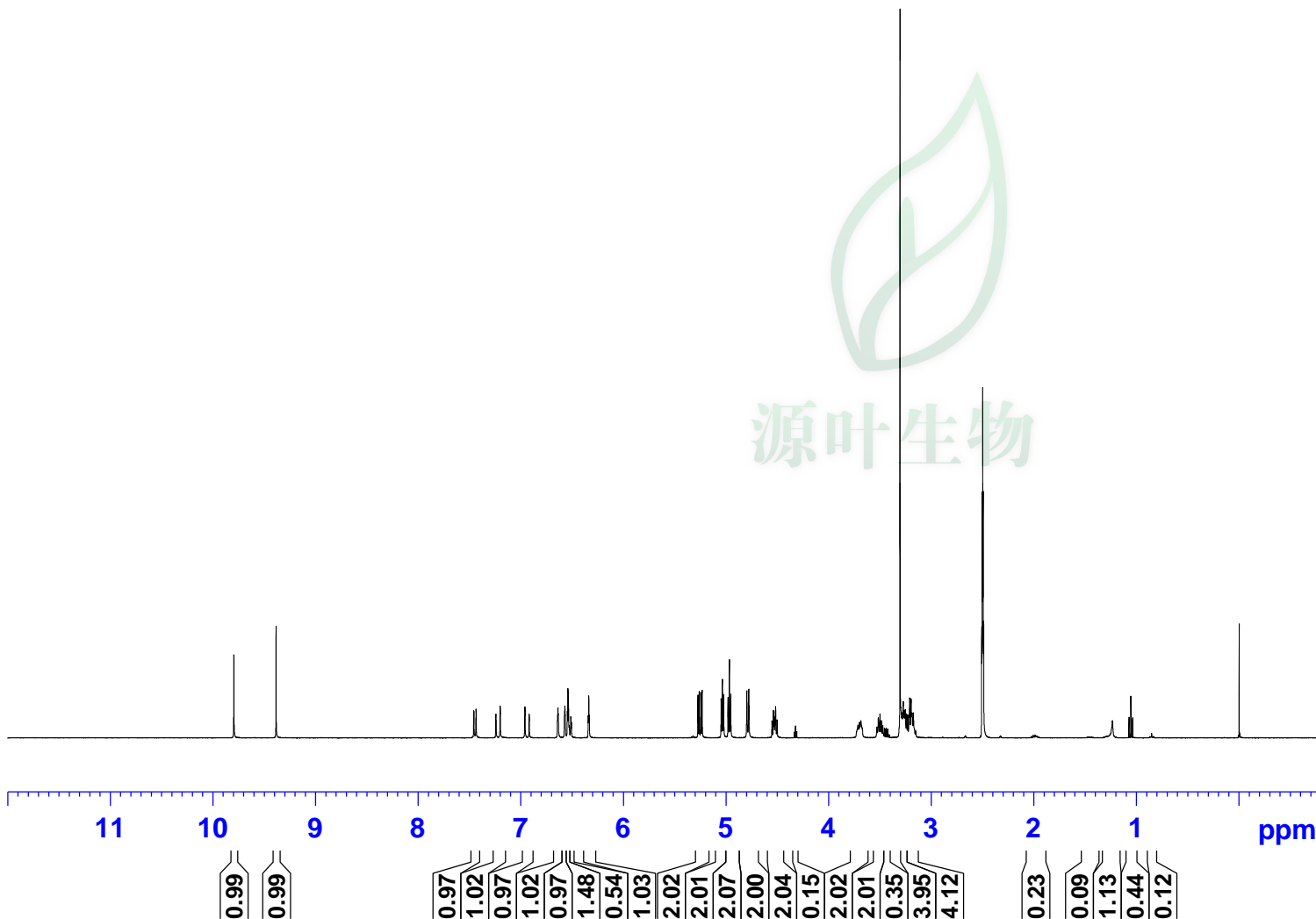
SWH 8012.820 Hz
Date_ 20160127
Time 14.30
INSTRUM spect
PROBHD 5 mm PABBO BB/
PULPROG zg30
TD 65536
SOLVENT DMSO
NS 64
DS 2
FIDRES 0.122266 Hz
AQ 4.0894465 sec
RG 202.5
DW 62.400 usec
DE 6.50 usec
TE 301.2 K
D1 2.00000000 sec
TD0 1

===== CHANNEL f1 =====

SFO1 400.1324710 MHz
NUC1 1H
P1 14.79 usec
PLW1 11.50800037 W

F2 - Processing parameters

SI 262144
SF 400.1300033 MHz
WDW no
SSB 0
LB 0 Hz
GB 0
PC 1.00



源叶生物

— 7.459
— 7.438

— 7.244
— 7.203

— 6.962
— 6.921



Current Data Parameters

NAME Mulberroside A-1H NMR DMSO
EXPNO 1
PROCNO 1

F2 - Acquisition Parameters

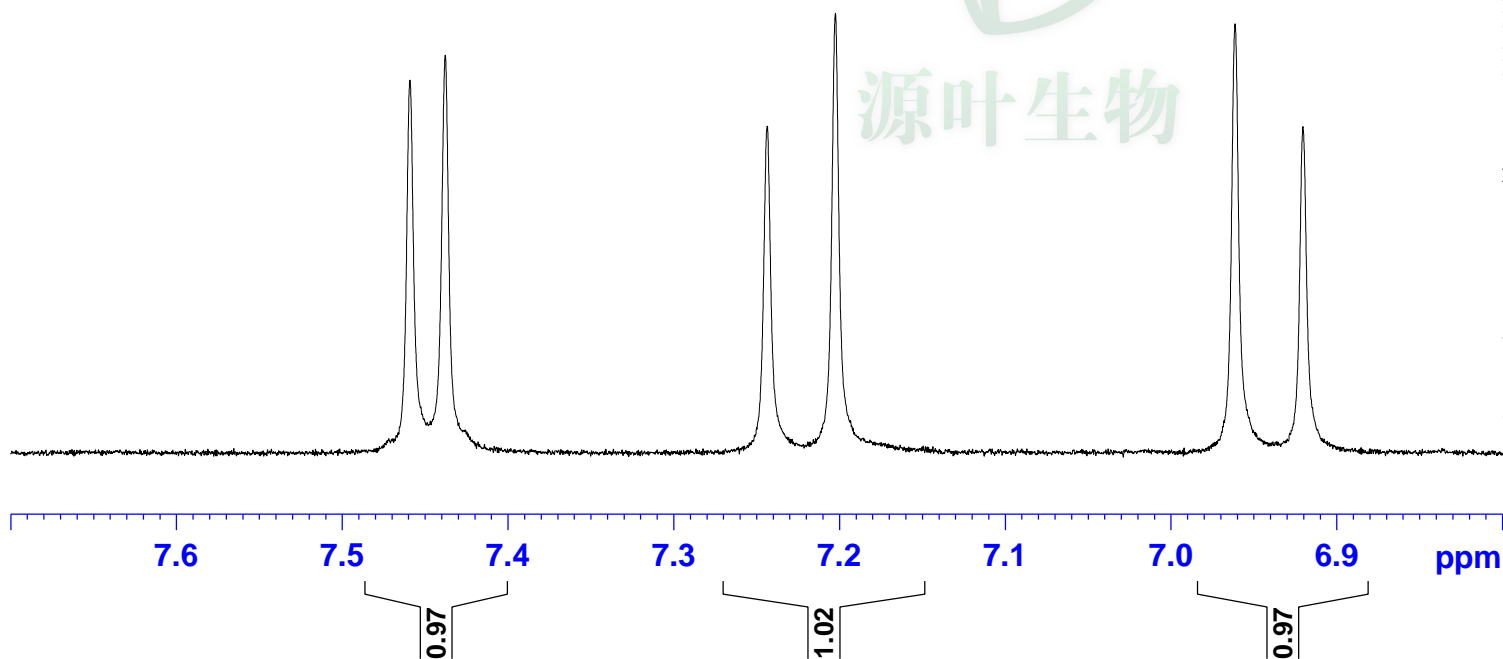
SWH 8012.820 Hz
Date_ 20160127
Time 14.30
INSTRUM spect
PROBHD 5 mm PABBO BB/
PULPROG zg30
TD 65536
SOLVENT DMSO
NS 64
DS 2
FIDRES 0.122266 Hz
AQ 4.0894465 sec
RG 202.5
DW 62.400 usec
DE 6.50 usec
TE 301.2 K
D1 2.00000000 sec
TD0 1

===== CHANNEL f1 =====

SFO1 400.1324710 MHz
NUC1 1H
P1 14.79 usec
PLW1 11.50800037 W

F2 - Processing parameters

SI 262144
SF 400.1300033 MHz
WDW no
SSB 0
LB 0 Hz
GB 0
PC 1.00



6.640
6.636

6.577
6.572

6.548
6.542
6.536
6.530
6.515
6.509

6.345
6.339
6.334



Current Data Parameters

NAME Mulberroside A-1H NMR DMSO
EXPNO 1
PROCNO 1

F2 - Acquisition Parameters

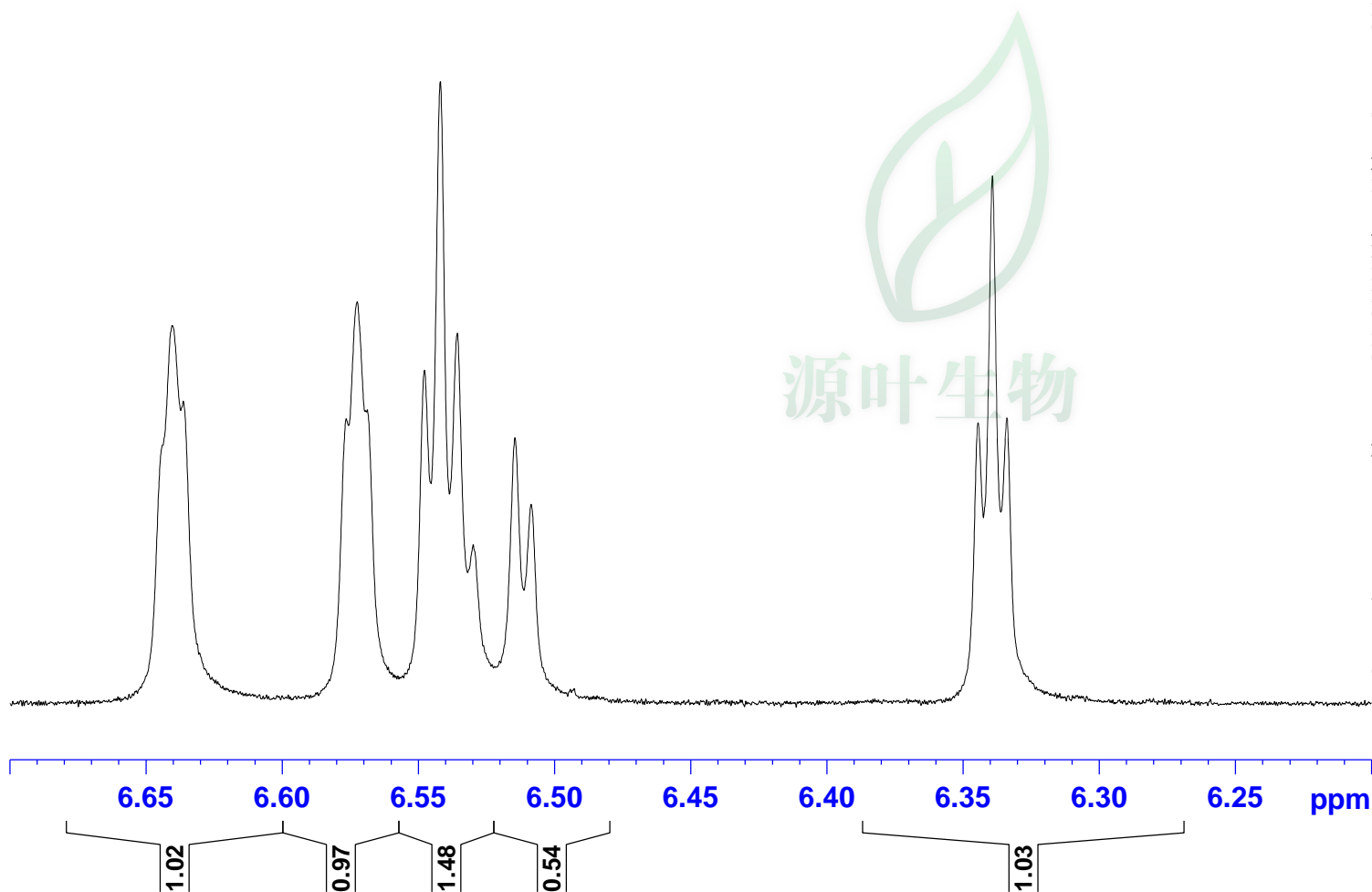
SWH 8012.820 Hz
Date_ 20160127
Time 14.30
INSTRUM spect
PROBHD 5 mm PABBO BB/
PULPROG zg30
TD 65536
SOLVENT DMSO
NS 64
DS 2
FIDRES 0.122266 Hz
AQ 4.0894465 sec
RG 202.5
DW 62.400 usec
DE 6.50 usec
TE 301.2 K
D1 2.00000000 sec
TD0 1

===== CHANNEL f1 =====

SFO1 400.1324710 MHz
NUC1 1H
P1 14.79 usec
PLW1 11.50800037 W

F2 - Processing parameters

SI 262144
SF 400.1300033 MHz
WDW no
SSB 0
LB 0 Hz
GB 0
PC 1.00



— 5.275
— 5.262
— 5.247
— 5.234

— 5.049
— 5.036
— 5.024

— 4.982
— 4.968
— 4.955

— 4.799
— 4.780



Current Data Parameters

NAME Mulberroside A-1H NMR DMSO
EXPNO 1
PROCNO 1

F2 - Acquisition Parameters

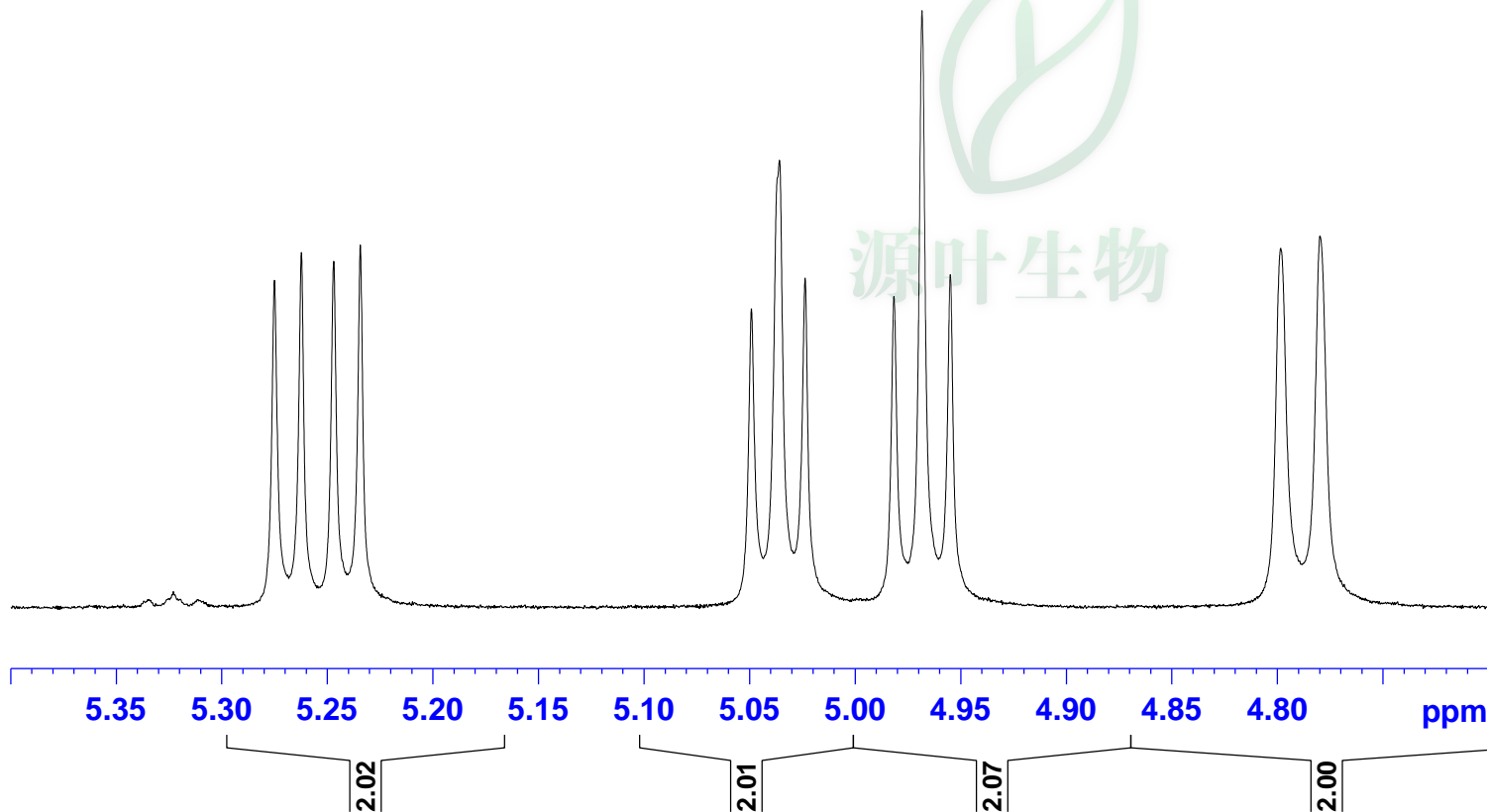
SWH 8012.820 Hz
Date_ 20160127
Time 14.30
INSTRUM spect
PROBHD 5 mm PABBO BB/
PULPROG zg30
TD 65536
SOLVENT DMSO
NS 64
DS 2
FIDRES 0.122266 Hz
AQ 4.0894465 sec
RG 202.5
DW 62.400 usec
DE 6.50 usec
TE 301.2 K
D1 2.00000000 sec
TD0 1

===== CHANNEL f1 =====

SFO1 400.1324710 MHz
NUC1 1H
P1 14.79 usec
PLW1 11.50800037 W

F2 - Processing parameters

SI 262144
SF 400.1300033 MHz
WDW no
SSB 0
LB 0 Hz
GB 0
PC 1.00



— 4.799
— 4.780

— 4.554
— 4.539
— 4.533
— 4.525
— 4.518
— 4.504



Current Data Parameters

NAME Mulberroside A-1H NMR DMSO
EXPNO 1
PROCNO 1

F2 - Acquisition Parameters

SWH 8012.820 Hz
Date_ 20160127
Time 14.30
INSTRUM spect
PROBHD 5 mm PABBO BB/
PULPROG zg30
TD 65536
SOLVENT DMSO
NS 64
DS 2
FIDRES 0.122266 Hz
AQ 4.0894465 sec
RG 202.5
DW 62.400 usec
DE 6.50 usec
TE 301.2 K
D1 2.00000000 sec
TD0 1

===== CHANNEL f1 =====

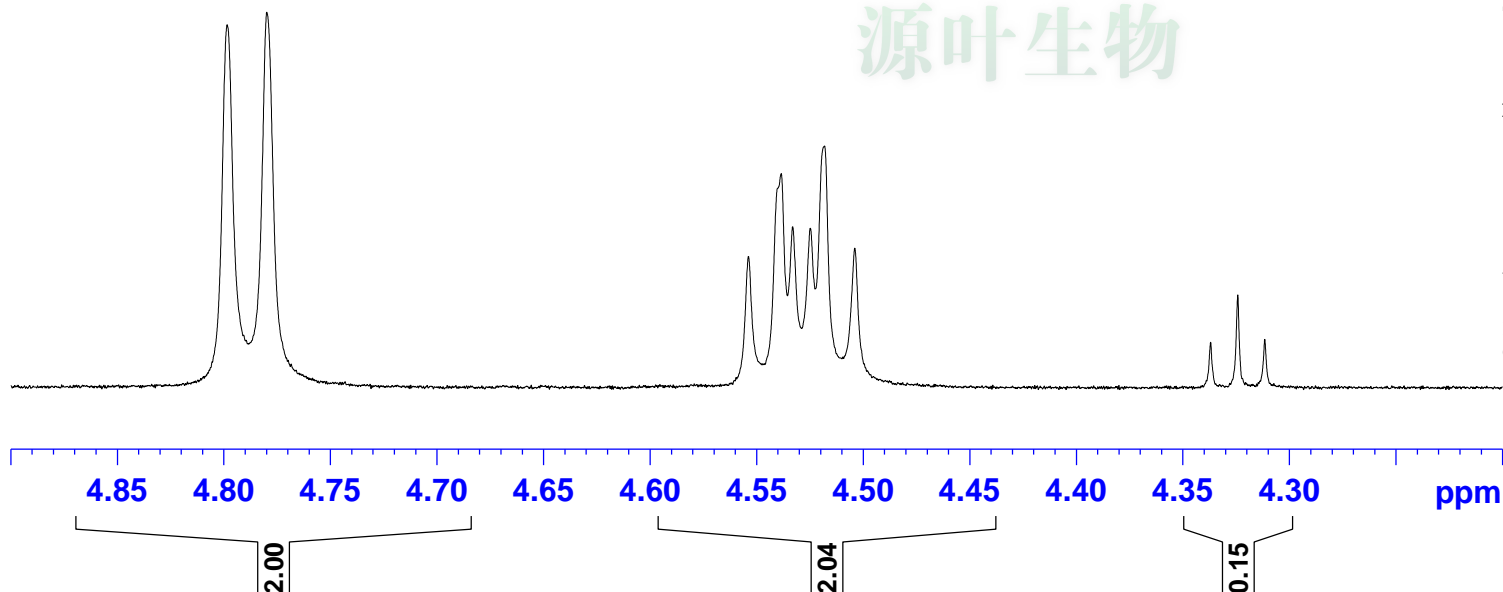
SFO1 400.1324710 MHz
NUC1 1H
P1 14.79 usec
PLW1 11.50800037 W

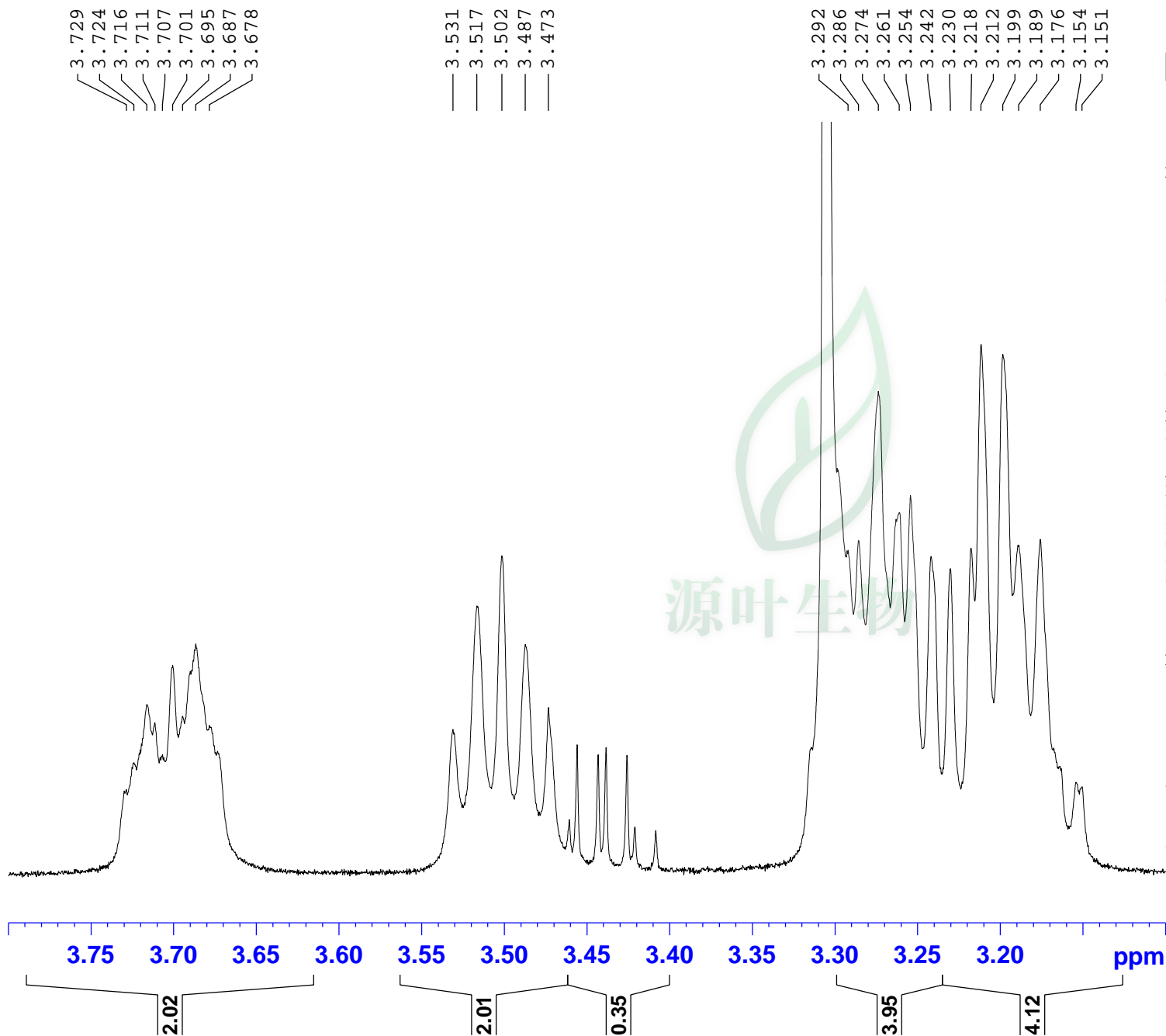
F2 - Processing parameters

SI 262144
SF 400.1300033 MHz
WDW no
SSB 0
LB 0 Hz
GB 0
PC 1.00



源叶生物





Current Data Parameters

NAME Mulberroside A-1H NMR DMSO
EXPNO 1
PROCNO 1

F2 - Acquisition Parameters

SWH 8012.820 Hz
Date_ 20160127
Time 14.30
INSTRUM spect
PROBHD 5 mm PABBO BB/
PULPROG zg30
TD 65536
SOLVENT DMSO
NS 64
DS 2
FIDRES 0.122266 Hz
AQ 4.0894465 sec
RG 202.5
DW 62.400 usec
DE 6.50 usec
TE 301.2 K
D1 2.00000000 sec
TD0 1

===== CHANNEL f1 =====

SFO1 400.1324710 MHz
NUC1 1H
P1 14.79 usec
PLW1 11.50800037 W

F2 - Processing parameters

SI 262144
SF 400.1300033 MHz
WDW no
SSB 0
LB 0 Hz
GB 0
PC 1.00



Current Data Parameters

NAME Mulberroside A-1H NMR DMSO
EXPNO 1
PROCNO 1

F2 - Acquisition Parameters

SWH 8012.820 Hz
Date_ 20160127
Time 14.30
INSTRUM spect
PROBHD 5 mm PABBO BB/
PULPROG zg30
TD 65536
SOLVENT DMSO
NS 64
DS 2
FIDRES 0.122266 Hz
AQ 4.0894465 sec
RG 202.5
DW 62.400 usec
DE 6.50 usec
TE 301.2 K
D1 2.00000000 sec
TD0 1

===== CHANNEL f1 =====

SFO1 400.1324710 MHz
NUC1 1H
P1 14.79 usec
PLW1 11.50800037 W

F2 - Processing parameters

SI 262144
SF 400.1300033 MHz
WDW no
SSB 0
LB 0 Hz
GB 0
PC 1.00

