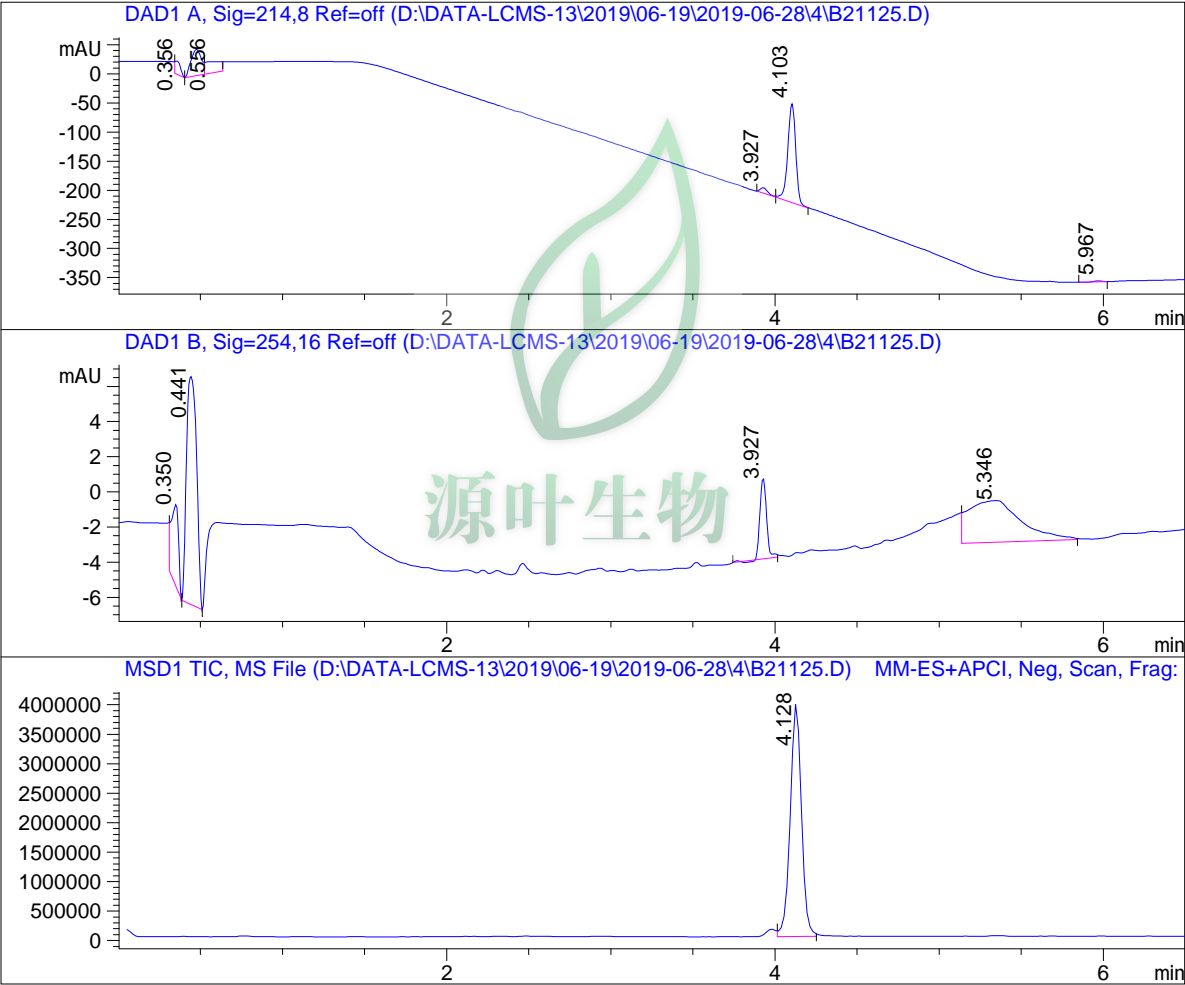


# LC - MS Report

Sample Name : B21125  
Data File : 2019\06-19\2019-06-28\4\B21125.D  
Injection Date : Sat, 29. Jun. 2019 Inj. Vol. : 5ul  
Acq Operator : LCMS-13 Location : Vial 71  
Acq. Method : N-05-95-C2.M  
Sample Info.: column:C18;column size:4.6\*50mm ;mobile phase:B(ACN),  
A(0.02%NH4Ac); gradient(B%):as Acq.Method above



=====  
Integration Results  
=====

Signal 1: DAD1 A, Sig=214,8 Ref=off

#	R.T.	Type	Height	Height%	Width	Area	Area %
1	0.356	BV	22.324	8.300	0.038	51.530	5.249
2	0.475	VV	45.611	16.957	0.075	199.957	20.369
3	0.556	VB	20.238	7.524	0.084	124.895	12.723

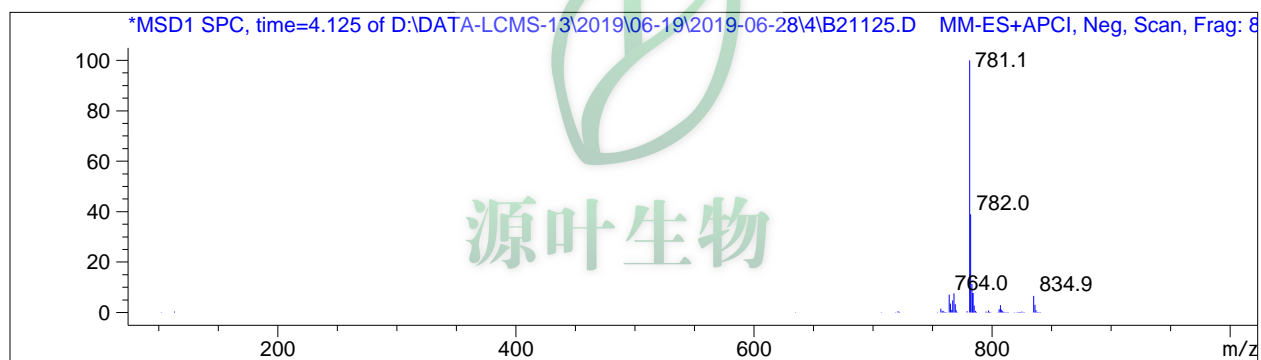
#	R.T.	Type	Height	Height%	Width	Area	Area %
4	3.927	BV	9.169	3.409	0.052	29.610	3.016
5	4.103	MF	169.884	63.158	0.056	570.317	58.096
6	5.967	VV	1.755	0.653	0.050	5.368	0.547

Signal 2: DAD1 B, Sig=254,16 Ref=off

#	R.T.	Type	Height	Height%	Width	Area	Area %
1	0.350	BV	4.629	18.863	0.045	13.896	10.286
2	0.441	VV	12.978	52.885	0.074	55.592	41.152
3	3.927	BB	4.565	18.602	0.045	12.728	9.422
4	5.346	BB	2.368	9.650	0.280	52.873	39.139

Signal 3: MSD1 TIC, MS File

#	R.T.	Type	Height	Height%	Width	Area	Area %
1	4.128	MF	4.005e+006	100.000	0.078	1.871e+007	100.000



\*\*\* End of Report \*\*\*