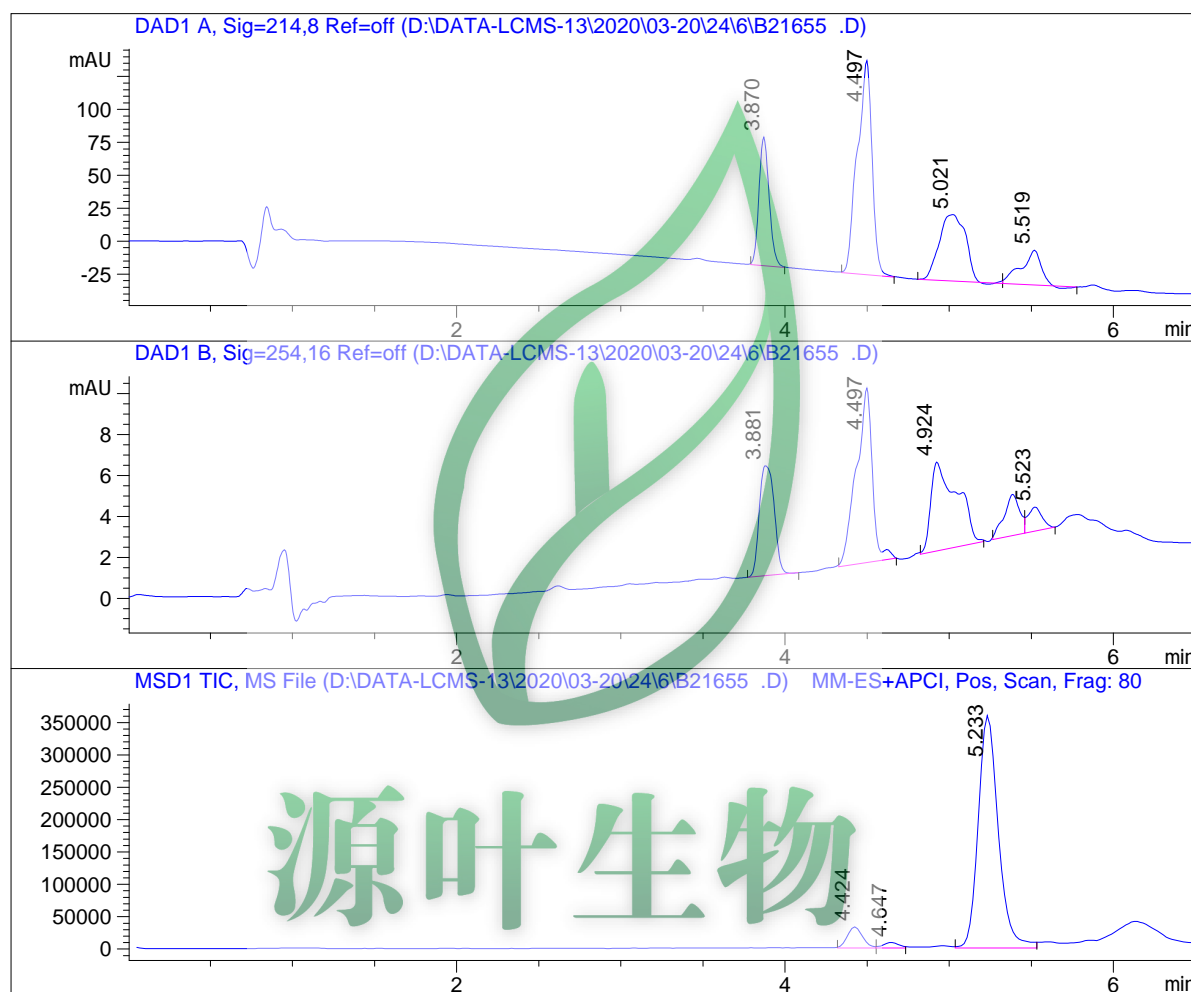


LCMS Report

Sample Name : B21655
 Data File : D:\DATA-LCMS-13\2020\03-20\24\6\B21655.D
 Injection Date : Wed, 25. Mar. 2020 Inj. Vol. : 10ul
 Acq Operator : LCMS-13 Location : Vial 24
 Acq. Method : D:\data-lcms-13\2020\03-20\24\6\P-50-95-C2.M
 Method Info. : column:Ecclipse XDB-C18 5um 4.6*150mm ;mobile phase:B(ACN), A(0.02%NH4AC); gradient(B%):as Acq.Method above



Integration Results

Signal 1: DAD1 A, Sig=214,8 Ref=off

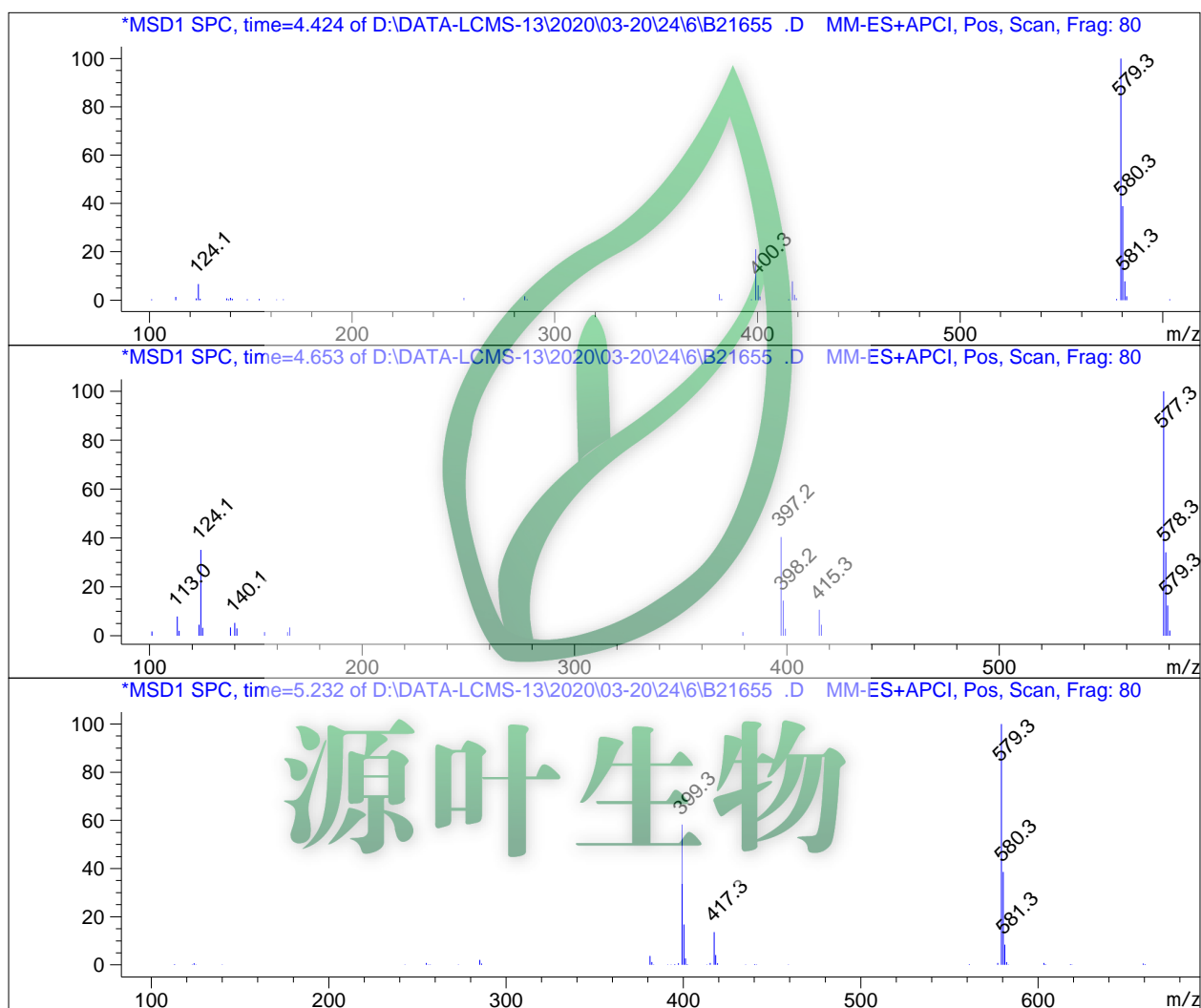
#	R.T.	Type	Height	Height%	Width	Area	Area %
1	3.870	BB	97.724	29.006	0.067	424.306	19.195
2	4.497	BB	162.527	48.241	0.089	1013.224	45.838
3	5.021	BB	50.405	14.961	0.141	558.817	25.281
4	5.519	BB	26.252	7.792	0.115	214.118	9.687

Signal 2: DAD1 B, Sig=254,16 Ref=off

#	R.T.	Type	Height	Height%	Width	Area	Area %
1	3.881	BB	5.376	25.081	0.103	33.859	21.132
2	4.497	BB	8.529	39.791	0.096	58.269	36.367
3	4.924	BB	4.345	20.271	0.146	47.783	29.822
4	5.386	BV	2.015	9.401	0.095	13.325	8.317
5	5.523	VB	1.169	5.456	0.088	6.988	4.361

Signal 3: MSD1 TIC, MS File

#	R.T.	Type	Height	Height%	Width	Area	Area %
1	4.424	MF	32624.746	8.151	0.107	208483.266	6.268
2	4.647	FM	8537.711	2.133	0.108	55189.941	1.659
3	5.233	VV	359101.531	89.716	0.131	3.062e+006	92.072



*** End of Report ***